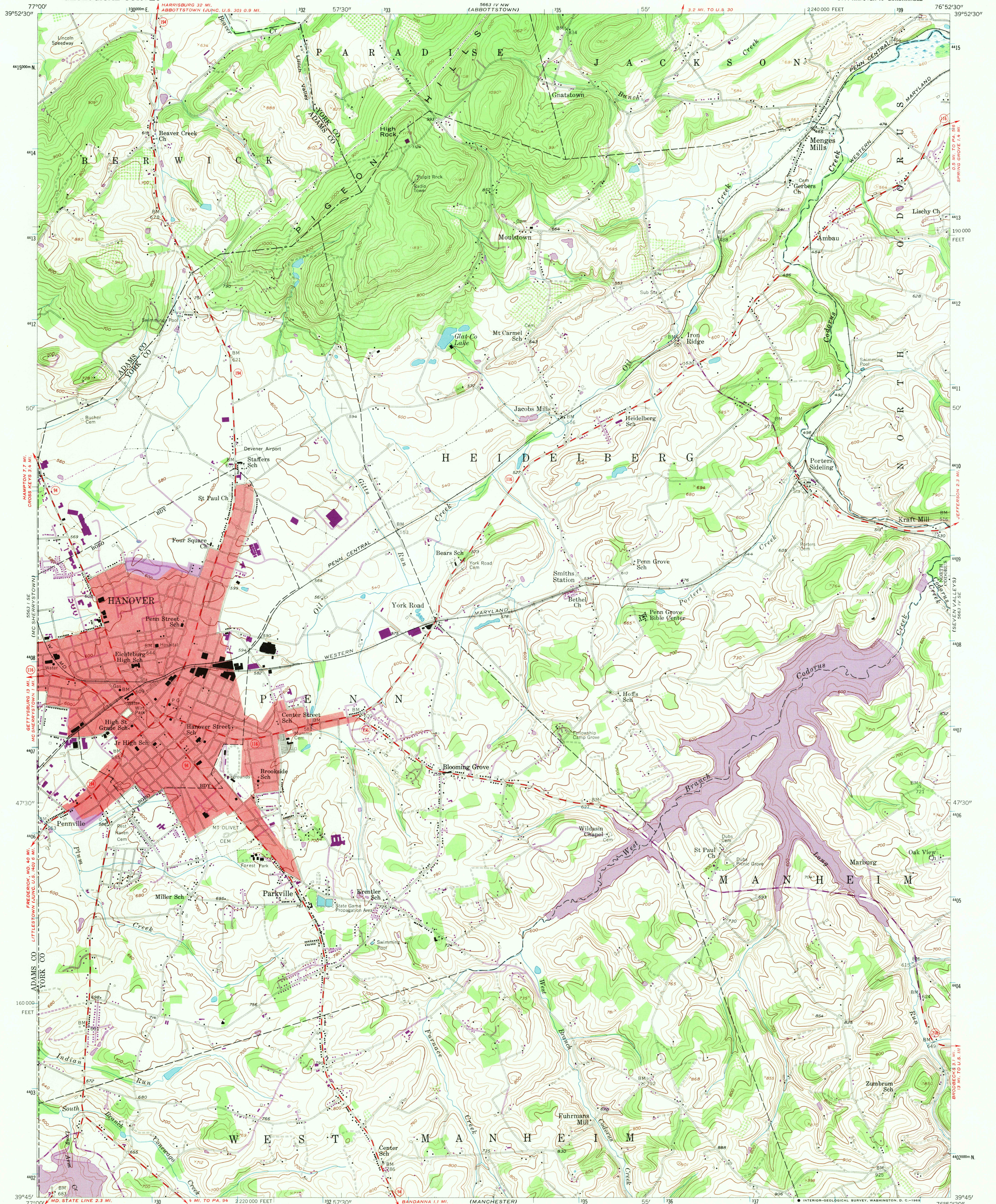


UNITED STATES  
DEPARTMENT OF THE INTERIOR  
GEOLOGICAL SURVEY

HANOVER QUADRANGLE  
PENNSYLVANIA  
7.5 MINUTE SERIES (TOPOGRAPHIC)  
SW 1/4 HANOVER 15' QUADRANGLE



Mapped, edited, and published by the Geological Survey

Control by USGS, USC&GS, USCE, and USSCS

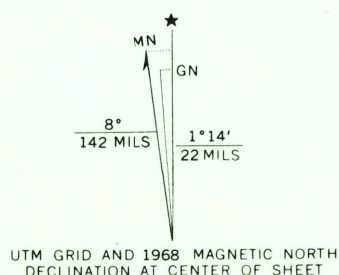
Topography from aerial photographs by photogrammetric methods. Aerial photographs taken 1952. Field check 1954

Polyconic projection. 1927 North American datum  
10,000-foot grid based on Pennsylvania coordinate system,  
south zone  
1000-meter Universal Transverse Mercator grid ticks,  
zone 18, shown in blue

Red tint indicates area in which only  
landmark buildings are shown

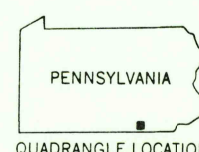
Revisions shown in purple compiled in cooperation with  
State of Pennsylvania agencies, from aerial photographs taken 1968  
This information not field checked

Purple tint indicates extension of urban area



THIS MAP COMPLIES WITH NATIONAL MAP ACCURACY STANDARDS  
FOR SALE BY U. S. GEOLOGICAL SURVEY, WASHINGTON, D. C. 20242  
A FOLDER DESCRIBING TOPOGRAPHIC MAPS AND SYMBOLS IS AVAILABLE ON REQUEST

USGS  
Historical File  
Topographic Division



ROAD CLASSIFICATION  
Heavy-duty ——— Light-duty ———  
Medium-duty ——— Unimproved dirt ———  
State Route

U.S.G.S.  
FILE COPY  
TOPOGRAPHIC DIVISION

HANOVER, PA.  
SW 1/4 HANOVER 15' QUADRANGLE  
N 3945-W 7652.5/7.5  
1954  
PHOTOREVISED 1968  
AMS 5663 IV SW-SERIES V831

JUN 11 1969