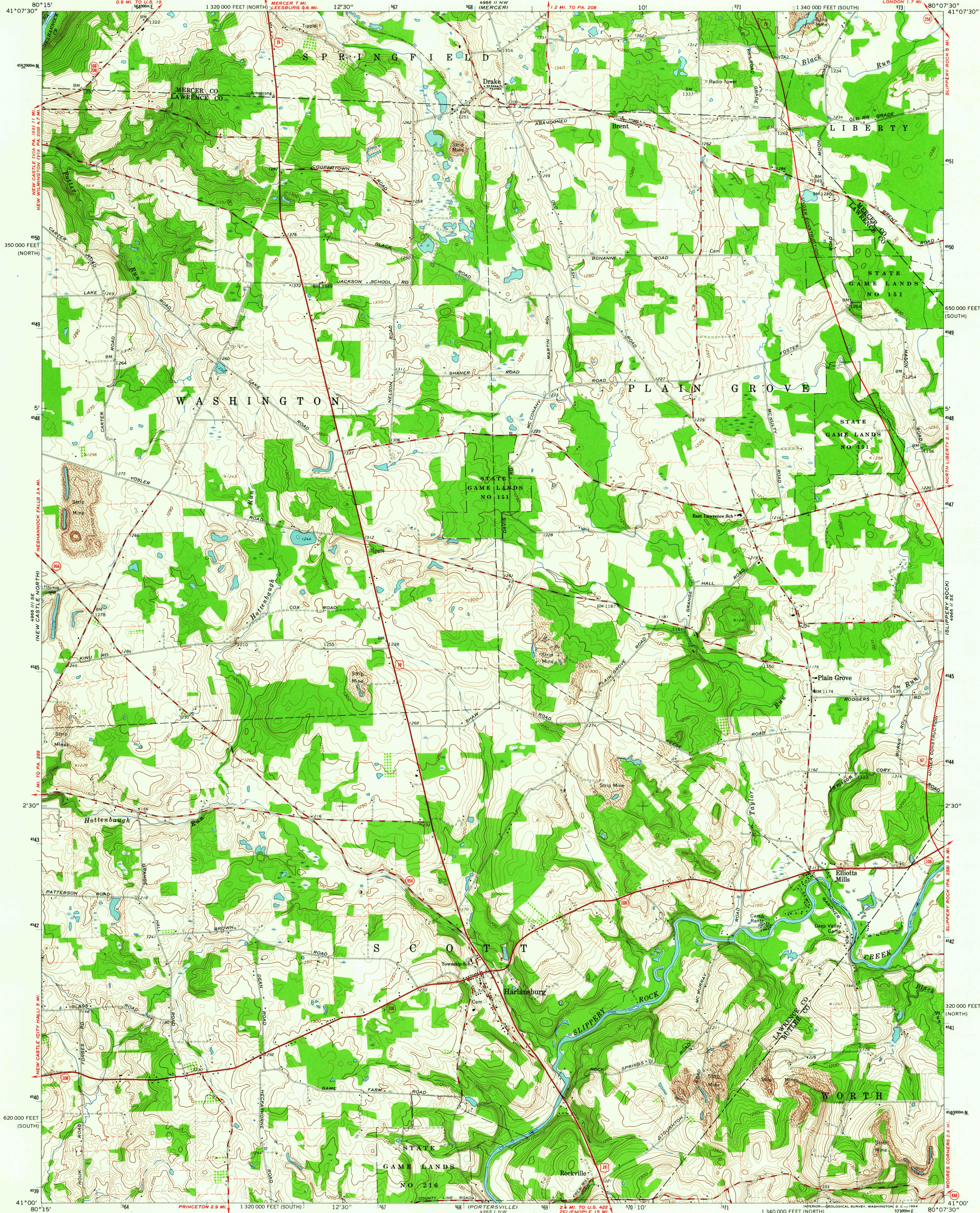
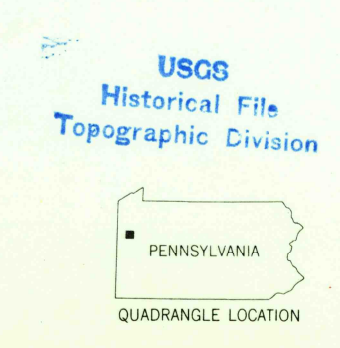
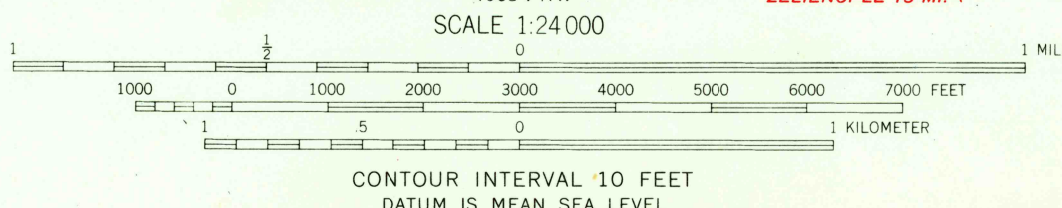
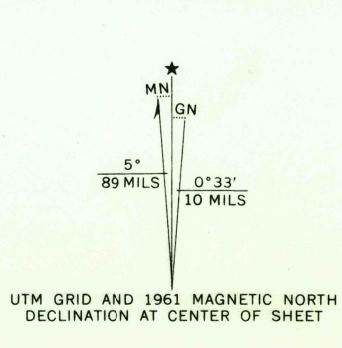


UNITED STATES
DEPARTMENT OF THE INTERIOR
GEOLOGICAL SURVEY

HARLANSBURG QUADRANGLE
PENNSYLVANIA
7.5 MINUTE SERIES (TOPOGRAPHIC)
SW/4 MERCER 15' QUADRANGLE
LONDON 1.7 MI.
PORTERSVILLE 6 MI.



Mapped, edited, and published by the Geological Survey
Control by USGS and USC&GS
Topography by photogrammetric methods from aerial
photographs taken 1958. Field checked 1961
Polyconic projection. 1927 North American datum
10,000-foot grids based on Pennsylvania coordinate system,
south and north zones
1000-meter Universal Transverse Mercator grid ticks,
zone 17, shown in blue
Fine red dashed lines indicate selected fence and field lines where
generally visible on aerial photographs. This information is unchecked



ROAD CLASSIFICATION
Heavy-duty ——— Light-duty ———
Medium-duty ——— Unimproved dirt ———
Interstate Route U. S. Route State Route
HARLANSBURG, PA.
SW/4 MERCER 15' QUADRANGLE
N4100-W8007.5/7.5
1961
AMS 4966 II SW—SERIES V831

THIS MAP COMPLIES WITH NATIONAL MAP ACCURACY STANDARDS
FOR SALE BY U. S. GEOLOGICAL SURVEY, WASHINGTON 25, D. C.
A FOLDER DESCRIBING TOPOGRAPHIC MAPS AND SYMBOLS IS AVAILABLE ON REQUEST

MAR 17 1964

3530