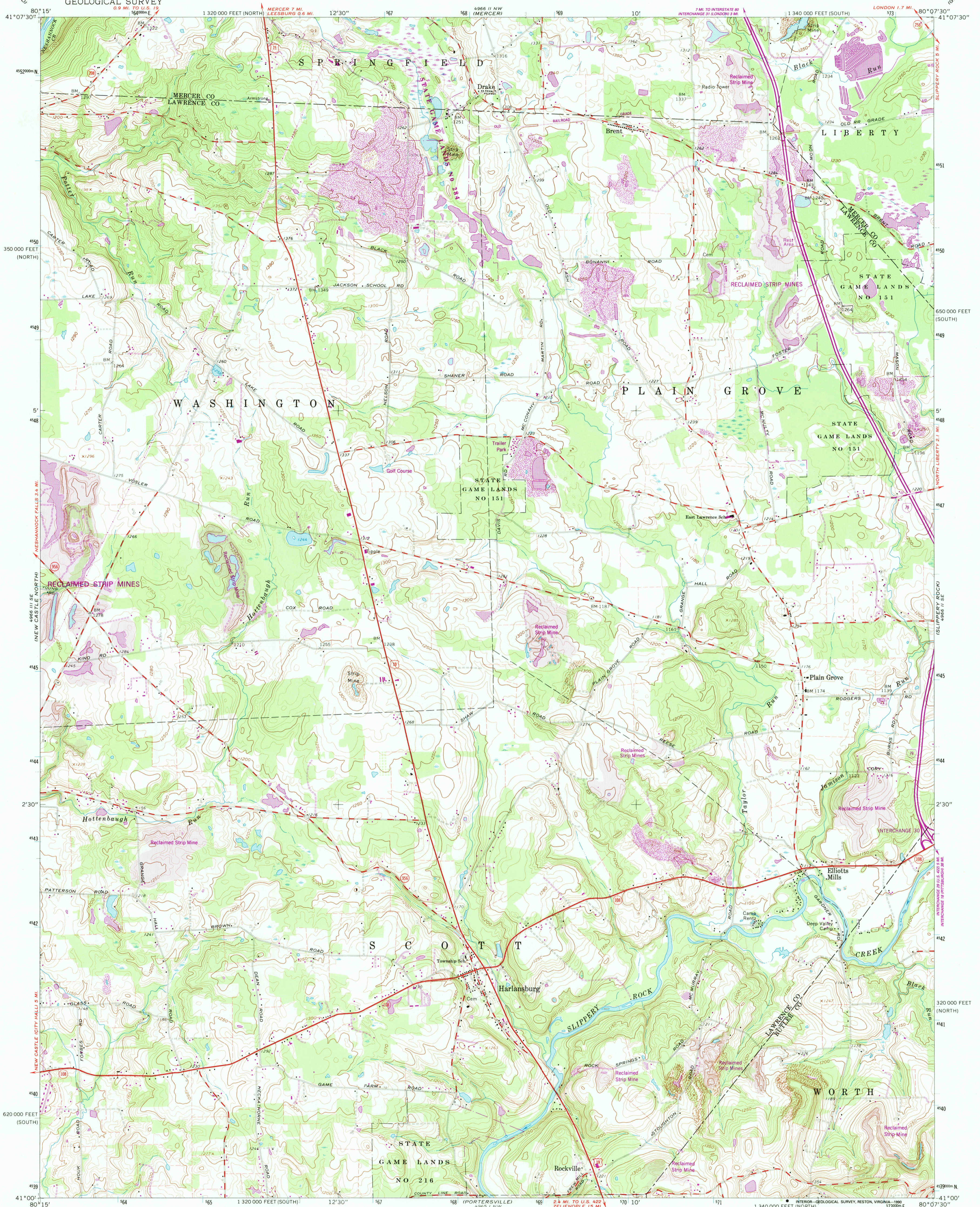


UNITED STATES
DEPARTMENT OF THE INTERIOR
GEOLOGICAL SURVEY

HARLANSBURG QUADRANGLE
PENNSYLVANIA
7.5 MINUTE SERIES (TOPOGRAPHIC)



Mapped, edited, and published by the Geological Survey

Control by USGS and USC&GS

Topography by photogrammetric methods from aerial photographs taken 1958. Field checked 1961

Polyconic projection. 1927 North American datum

10,000-foot grids based on Pennsylvania coordinate system, south and north zones

1000-meter Universal Transverse Mercator grid ticks, zone 17, shown in blue

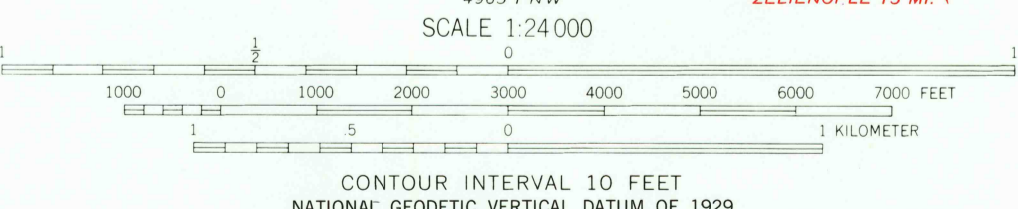
To place on the predicted North American Datum 1983 move the projection lines 3 meters south

and 18 meters west as shown by dashed corner ticks

Fine red dashed lines indicate selected fence and field lines where generally visible on aerial photographs. This information is unchecked

There may be private inholdings within the boundaries of the National or State reservations shown on this map

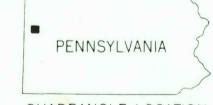
UTM GRID AND 1990 MAGNETIC NORTH DECLINATION AT CENTER OF SHEET
Contours in strip mine areas may not accurately represent present topography



THIS MAP COMPLIES WITH NATIONAL MAP ACCURACY STANDARDS
FOR SALE BY U.S. GEOLOGICAL SURVEY
DENVER, COLORADO 80225 OR RESTON, VIRGINIA 22092
A FOLDER DESCRIBING TOPOGRAPHIC MAPS AND SYMBOLS IS AVAILABLE ON REQUEST

Revisions shown in purple and woodland compiled in cooperation with Commonwealth of Pennsylvania agencies from aerial photographs taken 1987 and other sources. This information not field checked
Map edited 1990
Light purple tint indicates reclaimed strip mine areas

ROAD CLASSIFICATION
Heavy-duty ——— Light-duty ———
Medium-duty ——— Unimproved dirt ———
Interstate Route U. S. Route State Route



HARLANSBURG, PA.
41080-A2-TF-024

1961

PHOTOREVISED 1990

DMA 4966 II SW - SERIES 5831

USGS AND HISTORICAL MAP
APR 22 1991
REC'D FILE COPY