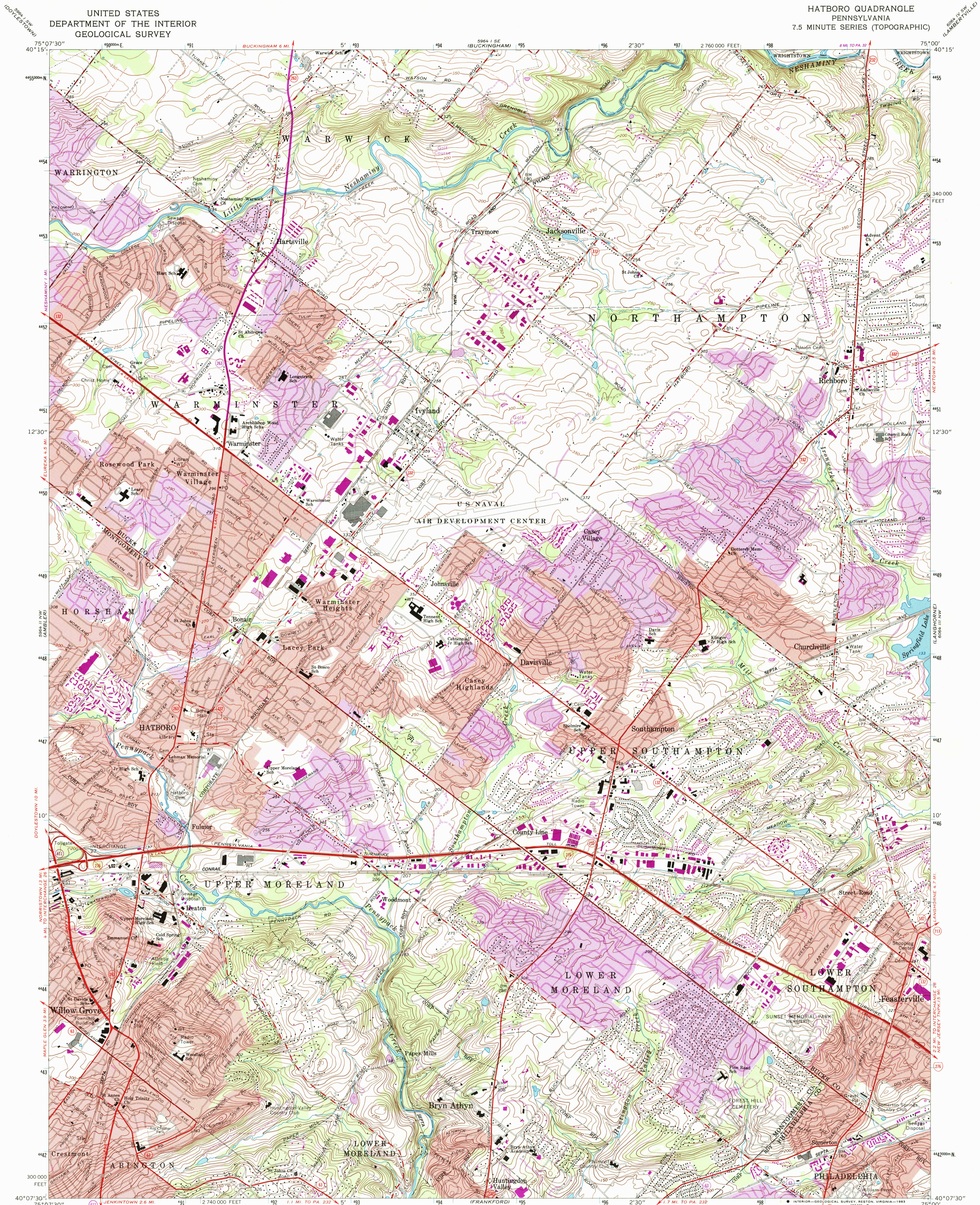


UNITED STATES  
DEPARTMENT OF THE INTERIOR  
GEOLOGICAL SURVEY

HATBORO QUADRANGLE  
PENNSYLVANIA  
7.5 MINUTE SERIES (TOPOGRAPHIC)



Mapped, edited, and published by the Geological Survey  
in cooperation with Pennsylvania Department of  
Internal Affairs, Topographic and Geologic Survey  
Control by USGS, NOS/NOAA, and USACE

Topography by photogrammetric methods from aerial  
photographs taken 1950. Field checked 1952. Revised  
from aerial photographs taken 1965. Field checked 1966.

Polyconic projection. 10,000-foot grid ticks based  
on Pennsylvania coordinate system, south zone.  
1000-meter Universal Transverse Mercator grid ticks,  
zone 18, shown in blue. 1927 North American Datum  
To place on the predicted North American Datum 1983  
move the projection lines 6 meters south and 32 meters  
west as shown by dashed corner ticks.

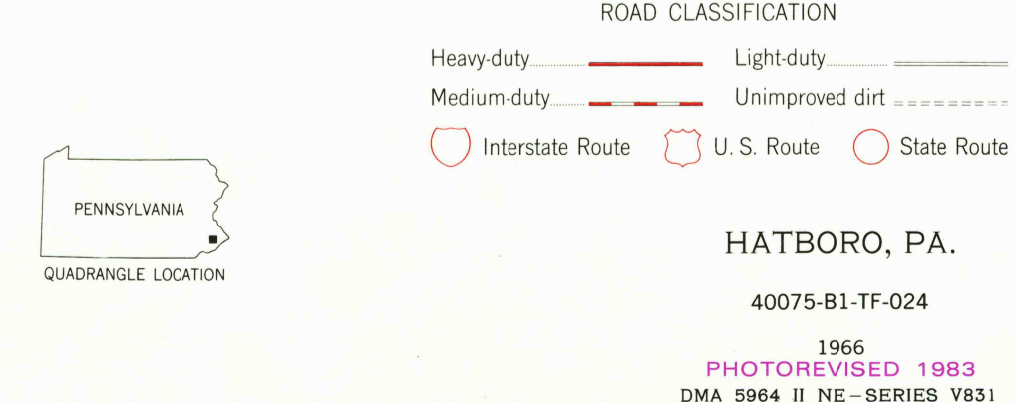
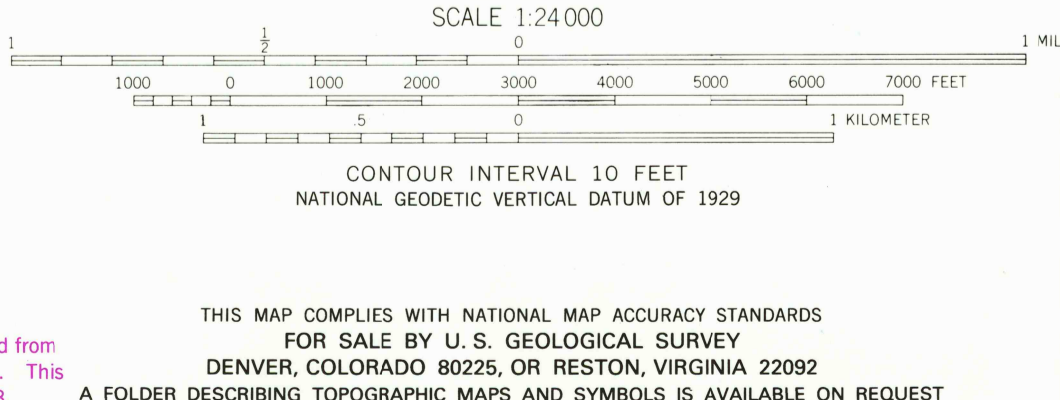
Fine red dashed lines indicate selected fence and field lines where  
generally visible on aerial photographs. This information is unchecked.

Red tint indicates areas in which only landmark buildings are shown.

There may be private inholdings within the boundaries of  
the National or State reservations shown on this map.

Revisions shown in purple and woodland compiled from  
aerial photographs taken 1981 and other sources. This  
information not field checked. Map edited 1983.

Purple tint indicates extension of urban areas.



NOV 22 1983  
REPRODUCTION COPY  
U.S. GEOLOGICAL SURVEY