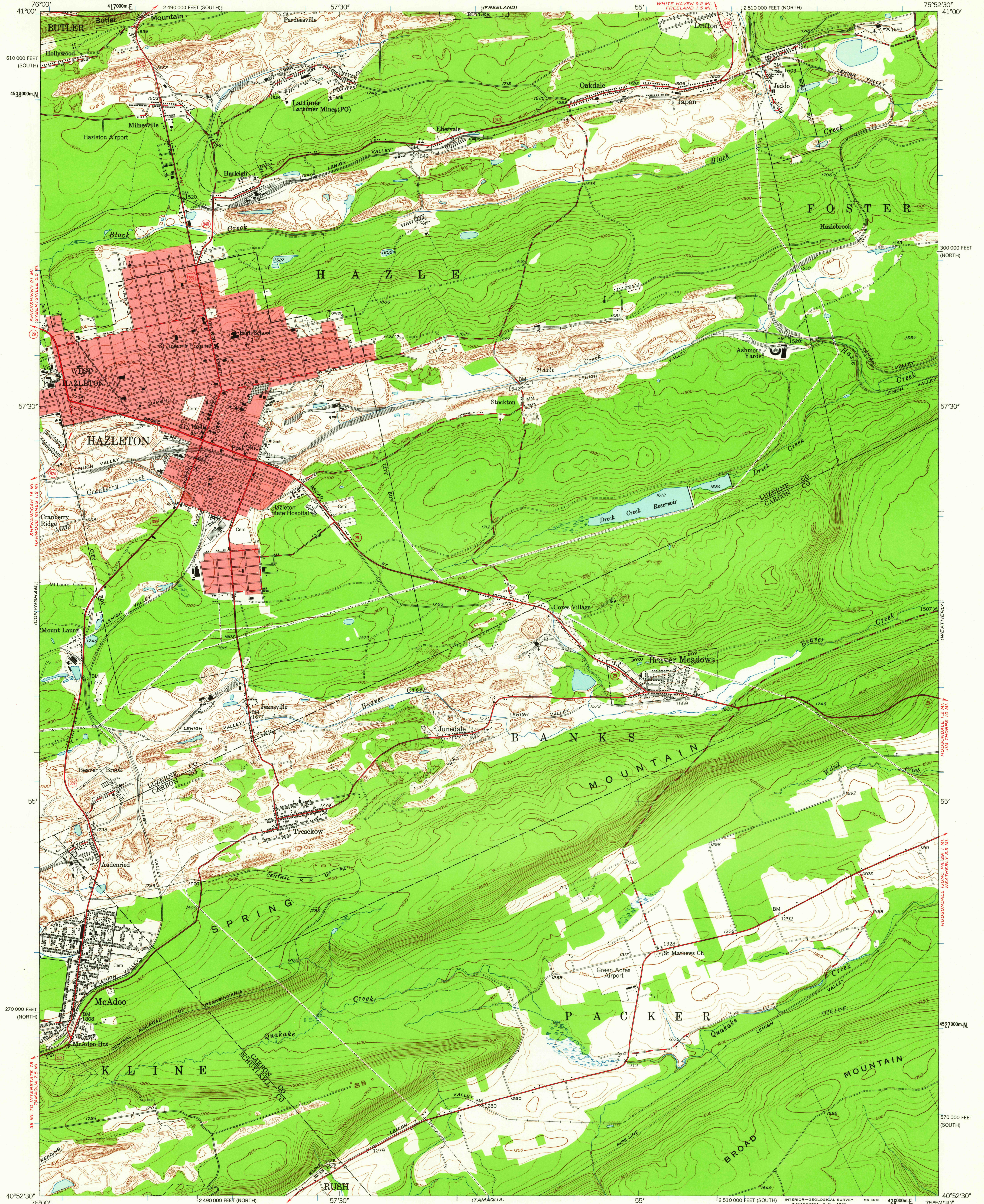


UNITED STATES
DEPARTMENT OF THE INTERIOR
GEOLOGICAL SURVEY

HAZLETON QUADRANGLE
PENNSYLVANIA
7.5 MINUTE SERIES (TOPOGRAPHIC)
NW 1/4 HAZLETON 15' QUADRANGLE



Mapped, edited, and published by the Geological Survey

Control by USGS, USC&GS, and
Pennsylvania Department of Highways

Topography from aerial photographs by multiplex methods
Aerial photographs taken 1942. Field check 1947

Polyconic projection. 1927 North American datum
10,000-foot grids based on Pennsylvania coordinate system,
north and south zones

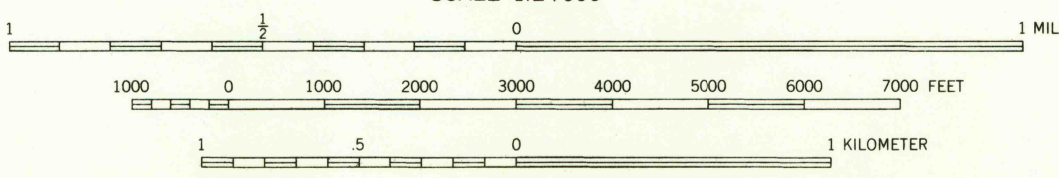
Red tint indicates area in which only
landmark buildings are shown

Contours in strip mine and mine dump areas
compiled from 1942 photography

1000-meter Universal Transverse Mercator grid ticks,
zone 18, shown in blue

TRUE NORTH
MAGNETIC NORTH
APPROXIMATE MEAN
DECLINATION, 1947

SCALE 1:24000

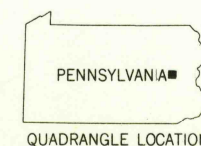


CONTOUR INTERVAL 20 FEET

DATUM IS MEAN SEA LEVEL

THIS MAP COMPLIES WITH NATIONAL MAP ACCURACY STANDARDS
FOR SALE BY U. S. GEOLOGICAL SURVEY, WASHINGTON 25, D. C.
A FOLDER DESCRIBING TOPOGRAPHIC MAPS AND SYMBOLS IS AVAILABLE ON REQUEST

USGS
Historical File
Topographic Division



ROAD CLASSIFICATION

Heavy-duty ——— Light-duty ———
Medium-duty ——— Unimproved dirt ———
U. S. Route ——— State Route ———

HAZLETON, PA.
NW 1/4 HAZLETON 15' QUADRANGLE
N4052.5-W7552.5/7.5

1947

U.S.G.S.
FILE COPY
TOPOGRAPHIC DIVISION

967-4 1962