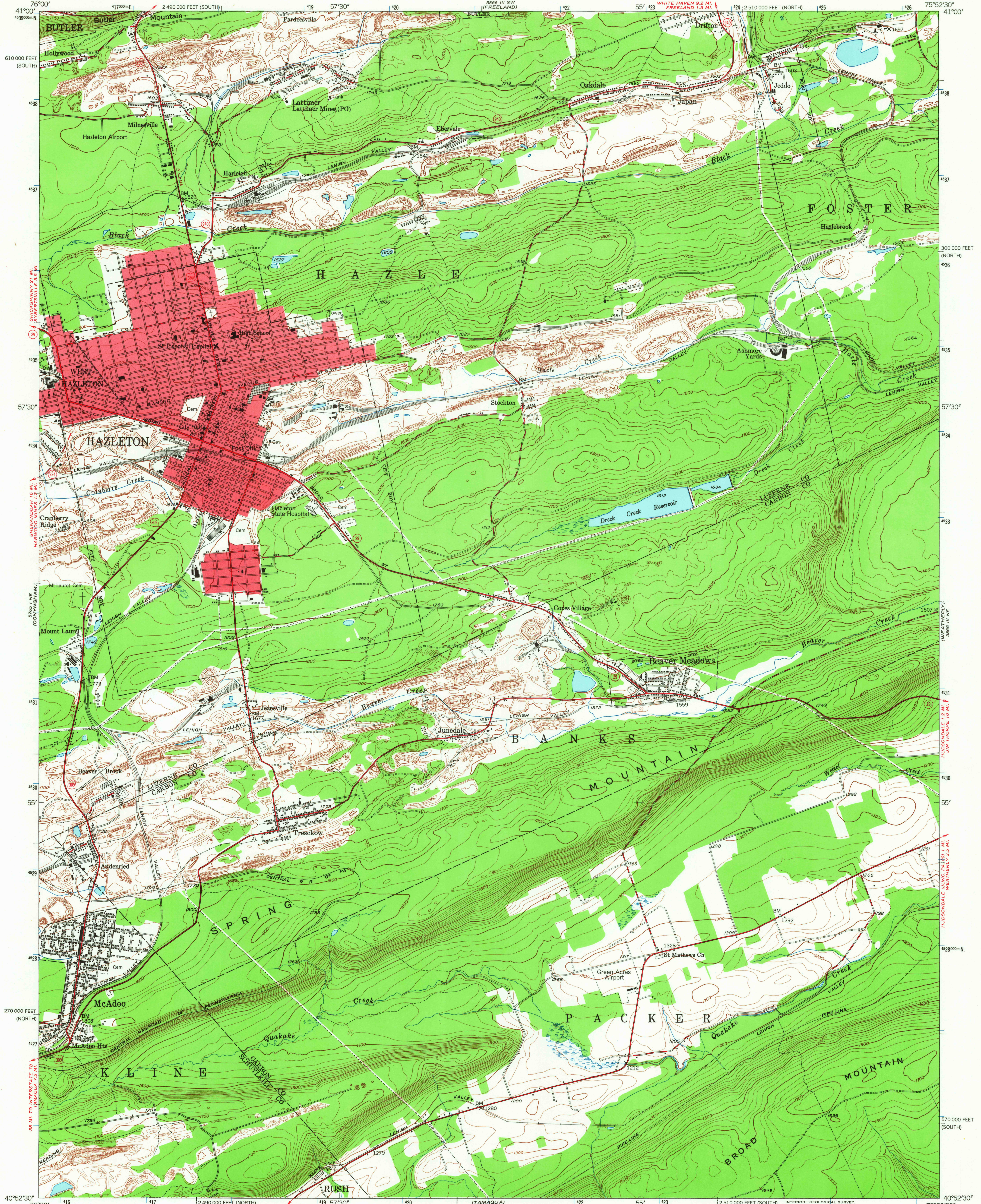
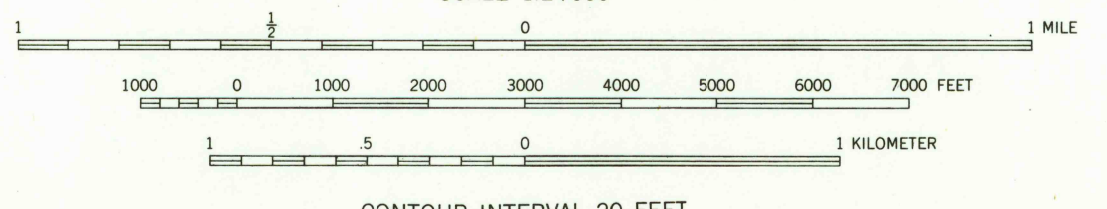
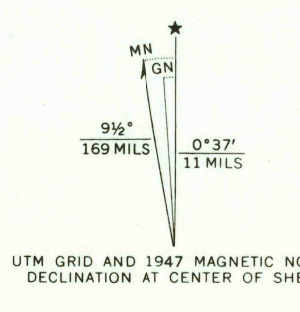


UNITED STATES DEPARTMENT OF THE INTERIOR
GEOLOGICAL SURVEY

HAZLETON QUADRANGLE
PENNSYLVANIA
7.5 MINUTE SERIES (TOPOGRAPHIC)
NW 1/4 HAZLETON 15' QUADRANGLE



Mapped, edited, and published by the Geological Survey
Control by USGS, USC&GS, and
Pennsylvania Department of Highways
Topography from aerial photographs by multiplex methods
Aerial photographs taken 1942. Field check 1947
Polyconic projection, 1927 North American datum
10,000-foot grids based on Pennsylvania coordinate system,
north and south zones
Red tint indicates area in which only
landmark buildings are shown
Contours in strip mine and mine dump areas
compiled from 1942 photography
1000-meter Universal Transverse Mercator grid ticks,
zone 18, shown in blue



USGS
Historical File
Topographic Division
U.S.G.S.
PENNSYLVANIA
TOPOGRAPHIC DIVISION

ROAD CLASSIFICATION
Heavy-duty ——— Light-duty ———
Medium-duty ——— Unimproved dirt ———
U.S. Route ——— State Route ———

HAZLETON, PA.
NW 1/4 HAZLETON 15' QUADRANGLE
N4052.5-W7552.5/7.5
1947
AMS 5865 IV NW-SERIES V831

THIS MAP COMPLIES WITH NATIONAL MAP ACCURACY STANDARDS
FOR SALE BY U.S. GEOLOGICAL SURVEY, WASHINGTON, D. C. 20242
A FOLDER DESCRIBING TOPOGRAPHIC MAPS AND SYMBOLS IS AVAILABLE ON REQUEST