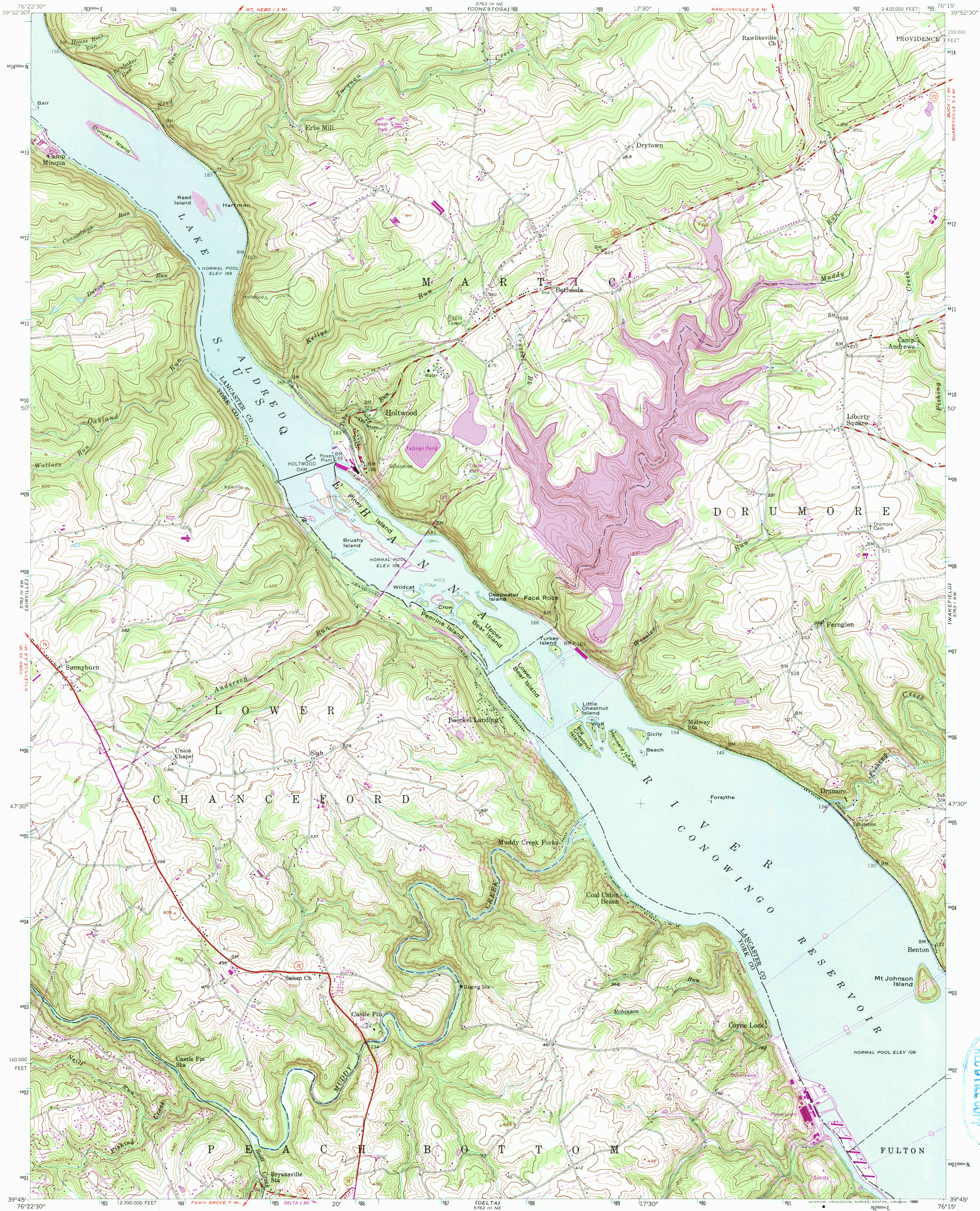


UNITED STATES  
DEPARTMENT OF THE INTERIOR  
GEOLOGICAL SURVEY

HOLTWOOD QUADRANGLE  
PENNSYLVANIA  
7.5 MINUTE SERIES (TOPOGRAPHIC)



Mapped, edited, and published by the Geological Survey

Control by USGS, NOS/NOAA, and USCE

Topography by photogrammetric methods from aerial photographs taken 1952. Field checked 1955

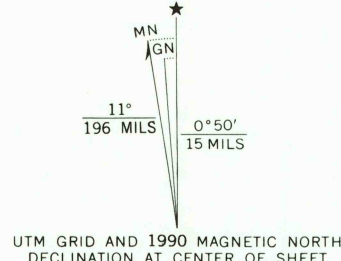
Polyconic projection. 1927 North American Datum

10,000-foot grid ticks based on Pennsylvania coordinate system, south zone

1000-meter Universal Transverse Mercator grid ticks, zone 18, shown in blue

To place on the predicted North American Datum 1983 move the projection lines 6 meters south and 28 meters west as shown by dashed corner ticks

Revisions shown in purple and woodland compiled in cooperation with Commonwealth of Pennsylvania agencies from aerial photographs taken 1988 and other sources. This information not field checked. Map edited 1990



SCALE 1:24 000

1 0000 0 1000 2000 3000 4000 5000 6000 7000 FEET

1 5 0 5 10 KILOMETER

CONTOUR INTERVAL 20 FEET

NATIONAL GEODETIC VERTICAL DATUM OF 1929

FOR SALE BY U. S. GEOLOGICAL SURVEY

DENVER, COLORADO 80225 OR RESTON, VIRGINIA 22092

A FOLDER DESCRIBING TOPOGRAPHIC MAPS AND SYMBOLS IS AVAILABLE ON REQUEST



ROAD CLASSIFICATION  
Heavy-duty ——— Light-duty ———  
Medium-duty ——— Unimproved dirt ———  
U. S. Route ——— State Route ———

HOLTWOOD, PA.  
39076-G3-TF-024

1955  
PHOTOREVISED 1990  
DMA 5763 IV SE—SERIES V831