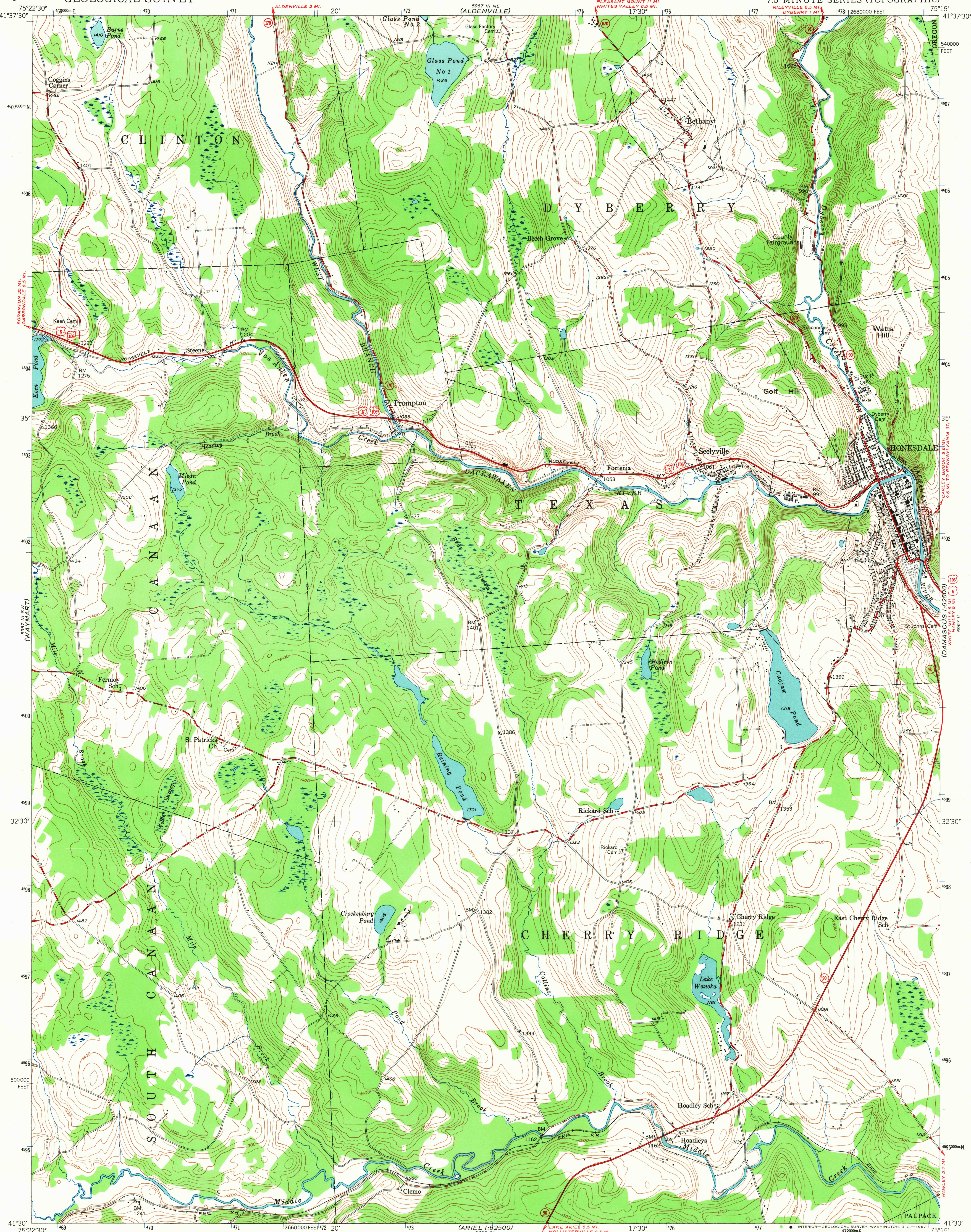


UNITED STATES
DEPARTMENT OF THE INTERIOR
GEOLOGICAL SURVEY

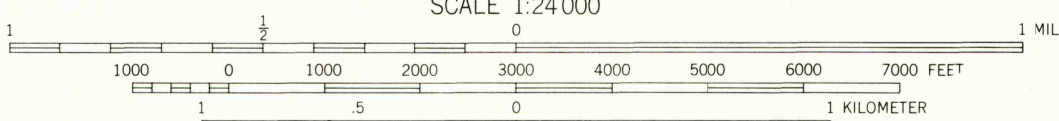
HONESDALE QUADRANGLE
PENNSYLVANIA-WAYNE CO.
7.5 MINUTE SERIES (TOPOGRAPHIC)

5967 III
1:62500
(DAMASCUS)



Mapped, edited, and published by the Geological Survey
Control by USGS and USC&GS
Topography from aerial photographs by multiplex methods
Aerial photographs taken 1942. Field check 1946
Polyconic projection. 1927 North American datum
10,000-foot grid based on Pennsylvania coordinate system,
north zone.
1000-meter Universal Transverse Mercator grid ticks,
zone 18, shown in blue

UTM GRID AND 1946 MAGNETIC NORTH
DECLINATION AT CENTER OF SHEET



CONTOUR INTERVAL 20 FEET
DATUM IS MEAN SEA LEVEL

THIS MAP COMPLIES WITH NATIONAL MAP ACCURACY STANDARDS
FOR SALE BY U. S. GEOLOGICAL SURVEY, WASHINGTON, D. C. 20242
A FOLDER DESCRIBING TOPOGRAPHIC MAPS AND SYMBOLS IS AVAILABLE ON REQUEST

USGS
Historical File
Topographic Division

ROAD CLASSIFICATION
HARD-SURFACE ALL WEATHER ROADS DRY WEATHER ROADS
Heavy-duty — 3 LANE LANE Improved dirt —
Medium-duty — 4 LANE LANE Unimproved dirt —
Loose-surface, graded, or narrow hard-surface —
U. S. Route State Route

U.S.G.S.
TOPOGRAPHIC DIVISION

HONESDALE, PA.
N4130-W7515/7.5

1946
AMS 5967 III SE—SERIES V831

2210
MAR 1 1947