

(FIRST FORK)  
78°00'  
41°22'30"

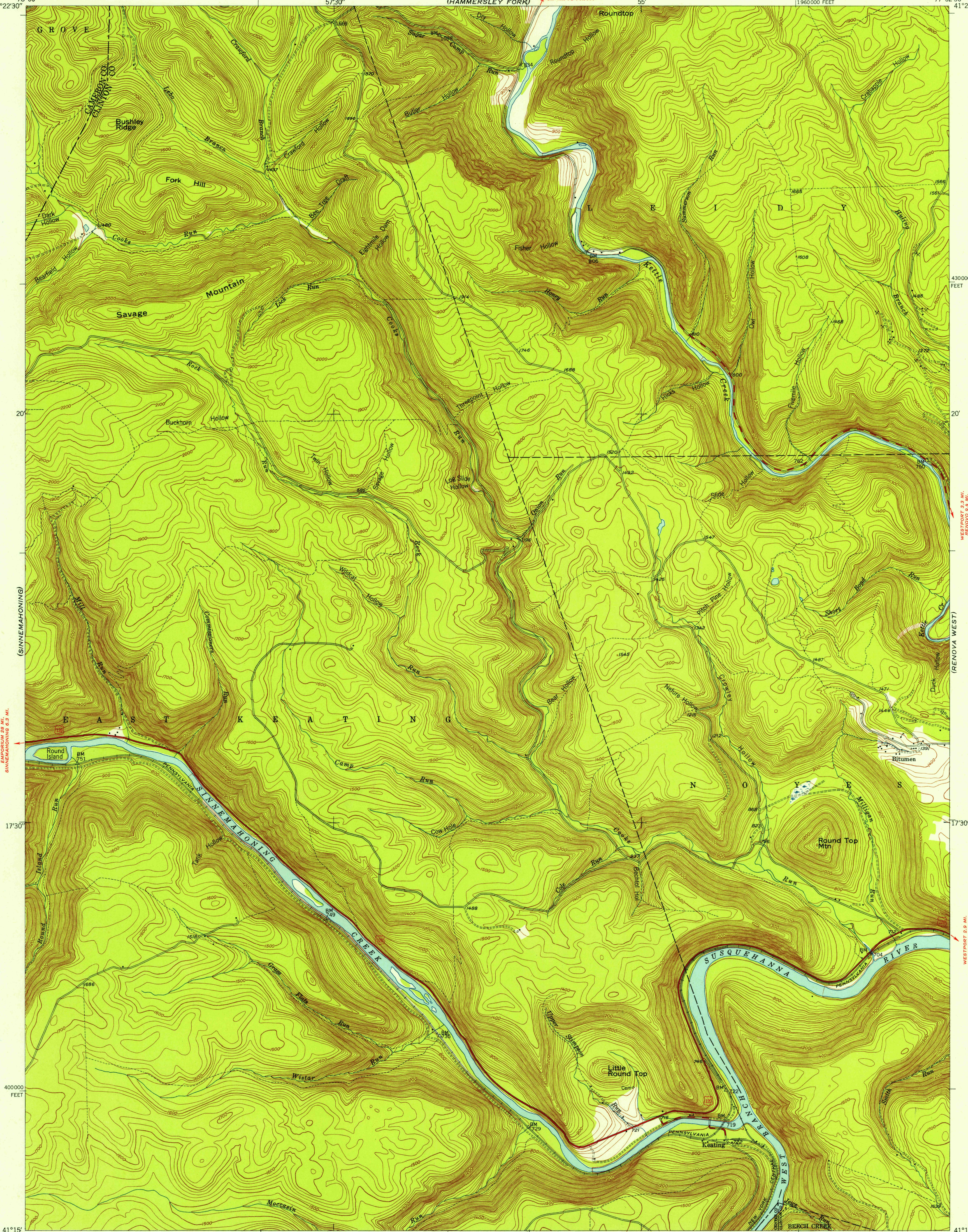
UNITED STATES  
DEPARTMENT OF THE INTERIOR  
GEOLOGICAL SURVEY

STATE OF PENNSYLVANIA  
DEPARTMENT OF INTERNAL AFFAIRS  
TOPOGRAPHIC AND GEOLOGIC SURVEY

KEATING QUADRANGLE  
PENNSYLVANIA  
7.5 MINUTE SERIES (TOPOGRAPHIC)  
1:960,000 FEET

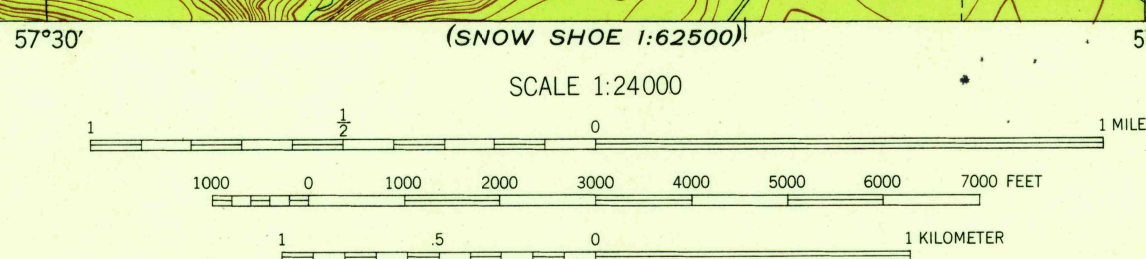
77°52'30"  
41°22'30"  
(TAMARACK)

U.S.G.S.  
FILE COPY  
TOPOGRAPHIC DIVISION



41°15'  
78°00'  
Mapped, edited, and published by the Geological Survey  
Control by USGS and USC&GS  
Topography from aerial photographs by multiplex methods  
Aerial photographs taken 1944. Field check, 1946  
Polyconic projection. 1927 North American datum  
10 000-foot grid based on Pennsylvania coordinate system,  
north zone

1940000 FEET



CONTOUR INTERVAL 20 FEET  
DATUM IS MEAN SEA LEVEL

THIS MAP COMPLIES WITH NATIONAL MAP ACCURACY STANDARDS

FOR SALE BY U. S. GEOLOGICAL SURVEY, WASHINGTON 25, D. C.  
A FOLDER DESCRIBING TOPOGRAPHIC MAPS AND SYMBOLS IS AVAILABLE ON REQUEST

USGS  
HISTORIC FILE  
TOPOGRAPHIC DIVISION

ROAD CLASSIFICATION			
Heavy-duty	4 LANE 16 LANE	Light-duty	
Medium-duty	4 LANE 16 LANE	Unimproved dirt	
	U. S. Route		State Route

KEATING, PA.  
N4115-W7752.5/7.5  
1946

U.S.G.S.  
FILE COPY  
TOPOGRAPHIC DIVISION

DEC 2 1954  
6395