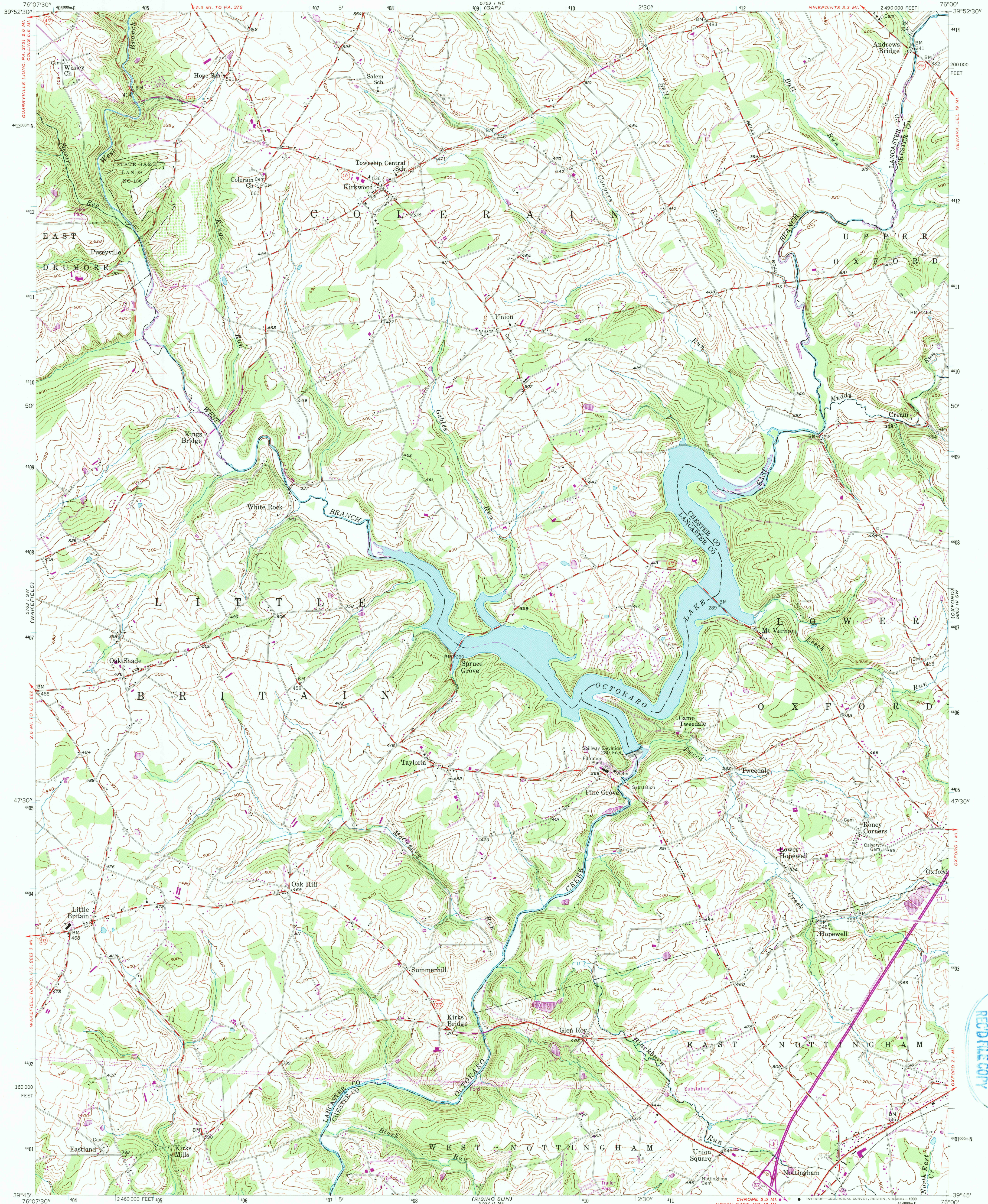
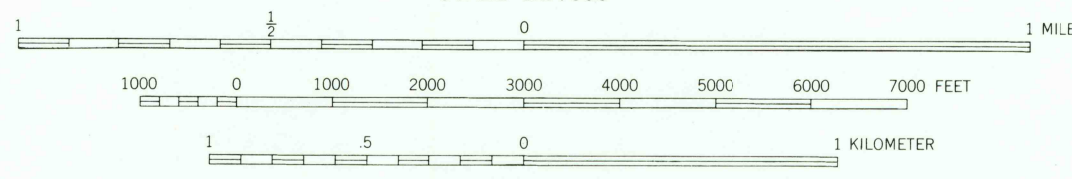
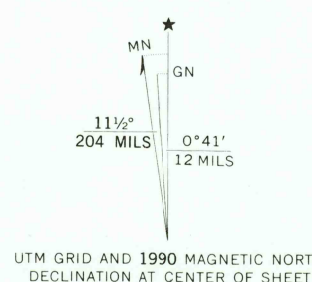


UNITED STATES
DEPARTMENT OF THE INTERIOR
GEOLOGICAL SURVEY

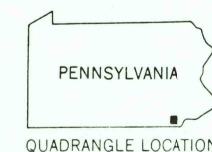
KIRKWOOD QUADRANGLE
PENNSYLVANIA
7.5 MINUTE SERIES (TOPOGRAPHIC)



Mapped, edited, and published by the Geological Survey
Control by USGS, USCE, and USSCS
Topography by photogrammetric methods from aerial photographs
taken 1952. Field checked 1955
Polyconic projection. 1927 North American Datum
10,000-foot grid ticks based on Pennsylvania coordinate system,
south zone
1000-meter Universal Transverse Mercator grid ticks,
zone 18, shown in blue
To place on the predicted North American Datum 1983
move the projection lines 6 meters south and
29 meters west as shown by dashed corner ticks
Fine red dashed lines indicate selected fence and field lines where
generally visible on aerial photographs. This information is unchecked
There may be private inholdings within the boundaries of
the National or State reservations shown on this map



THIS MAP COMPLIES WITH NATIONAL MAP ACCURACY STANDARDS
FOR SALE BY U.S. GEOLOGICAL SURVEY
DENVER, COLORADO 80225 OR RESTON, VIRGINIA 22092
A FOLDER DESCRIBING TOPOGRAPHIC MAPS AND SYMBOLS IS AVAILABLE ON REQUEST



ROAD CLASSIFICATION
Heavy-duty ——— Light-duty ———
Medium-duty ——— Unimproved dirt ———
U.S. Route ——— State Route ———

KIRKWOOD, PA.
39076-G1-1F-024

1955
PHOTOGRAPHED 1990
DMA 5763 1 SE—SERIES V831

Revisions shown in purple and woodland compiled in cooperation
with Commonwealth of Pennsylvania agencies from aerial photographs
taken 1988 and other sources. This information not field checked
Map edited 1990

REC'D FILE COPY

JUN 26 1991

USGS NHD HISTORICAL MAP