

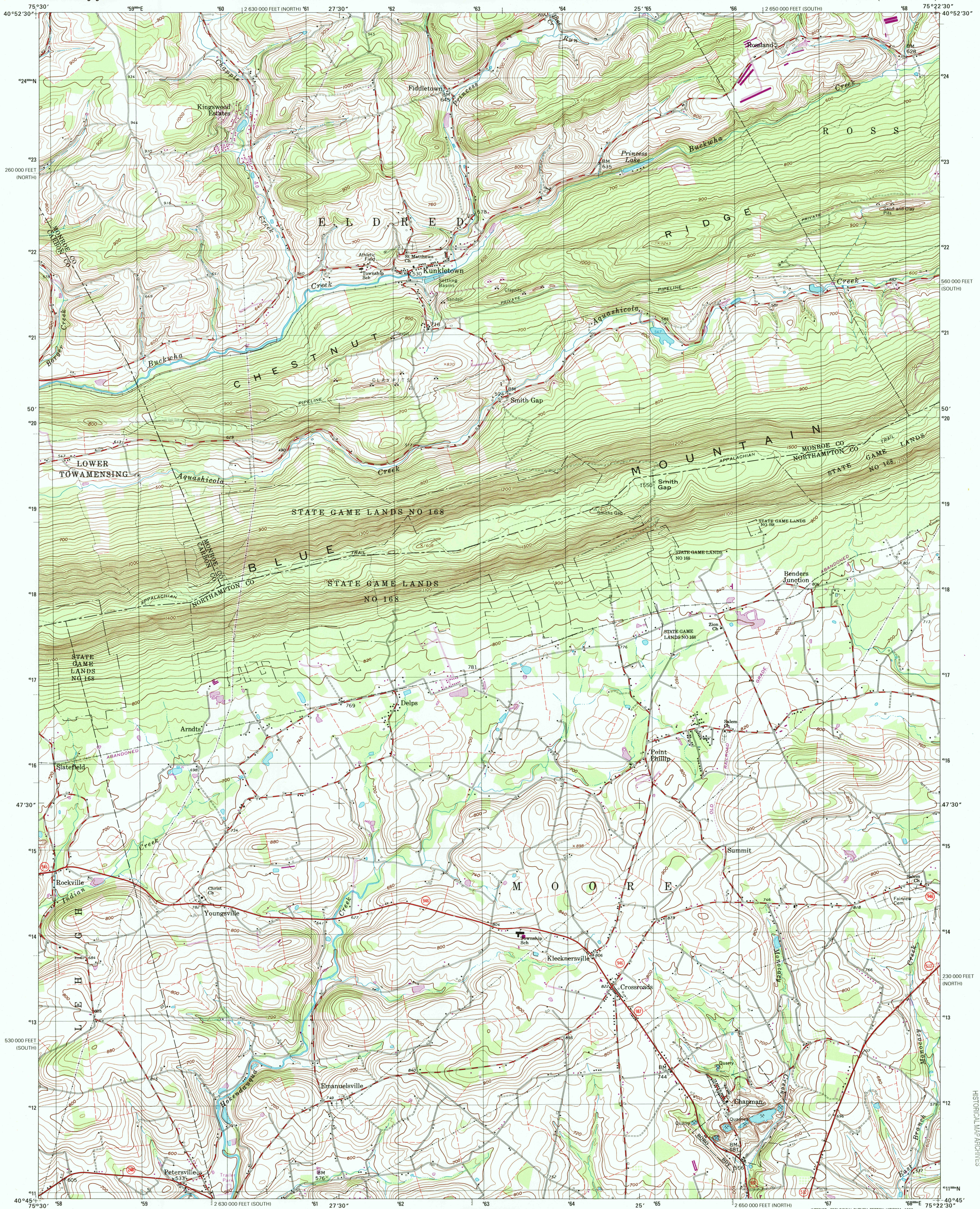


U.S. DEPARTMENT OF THE INTERIOR
U.S. GEOLOGICAL SURVEY

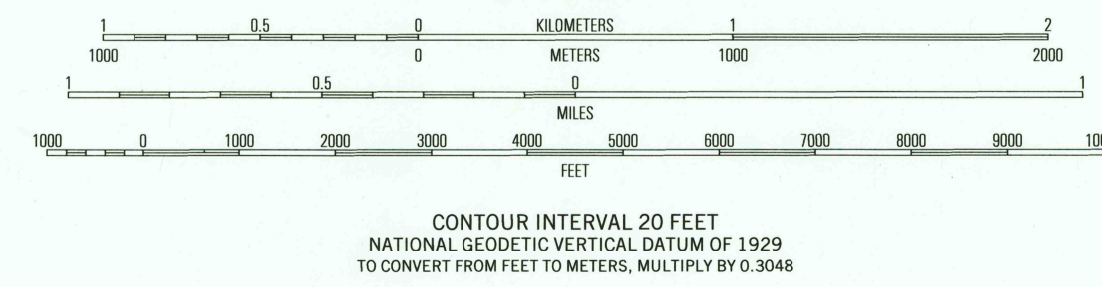
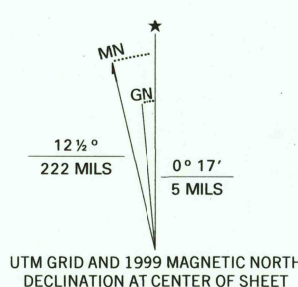


COMMONWEALTH OF PENNSYLVANIA
DEPARTMENT OF CONSERVATION AND NATURAL RESOURCES
BUREAU OF TOPOGRAPHIC AND GEOLOGIC SURVEY

KUNKLETOWN QUADRANGLE
PENNSYLVANIA
7.5-MINUTE SERIES (TOPOGRAPHIC)

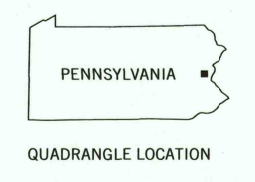


Produced by the United States Geological Survey
in cooperation with Pennsylvania Department of Conservation
and Natural Resources, Bureau of Topographic and Geologic Survey
Topography compiled 1951. Planimetry derived from imagery taken
1970 and other sources. Photorevised using imagery dated 1997;
no major culture or drainage changes observed. Survey control
current as of 1960. Boundaries, other than corporate, revised 1999
North American Datum of 1927 (NAD 27)
Projection: Pennsylvania coordinate system, south zone
(Lambert conformal conic)
10 000-foot ticks: Pennsylvania coordinate system,
south and north zones
1000-meter Universal Transverse Mercator grid, zone 18
North American Datum of 1983 (NAD 83) is shown by dashed
corner ticks. The values of the shift between NAD 27 and NAD 83
for 7.5-minute intersections are obtainable from National Geologic
Survey NADCON software
There may be private inholdings within the boundaries of
the National or State reservations shown on this map
Information shown in purple may not meet USGS content standards
and may conflict with previously mapped contours



CONTOUR INTERVAL 20 FEET
NATIONAL GEODETIC VERTICAL DATUM OF 1929
TO CONVERT FROM FEET TO METERS, MULTIPLY BY 0.3048

THIS MAP COMPLIES WITH NATIONAL MAP ACCURACY STANDARDS
FOR SALE BY U.S. GEOLOGICAL SURVEY, P.O. BOX 25286, DENVER, COLORADO 80225
A FOLDER DESCRIBING TOPOGRAPHIC MAPS AND SYMBOLS IS AVAILABLE ON REQUEST



1	2	3	1 Pohocock Mtn
4	5	4 Saylorsburg	
6	7	5 Wind Gap	
		6 Cementon	
		7 Catsaqua	
		8 Nazareth	

ROAD CLASSIFICATION
Primary highway hard surface
Secondary highway hard surface
Light-duty road, hard or improved surface
Unimproved road
Interstate Route
U.S. Route
State Route

KUNKLETOWN, PA

1997

NIMA 5965 IV SW-SERIES V831

RECEIVED
DEC 31 1999
USGS WAD
HISTORICAL MAP ARCHIVES

