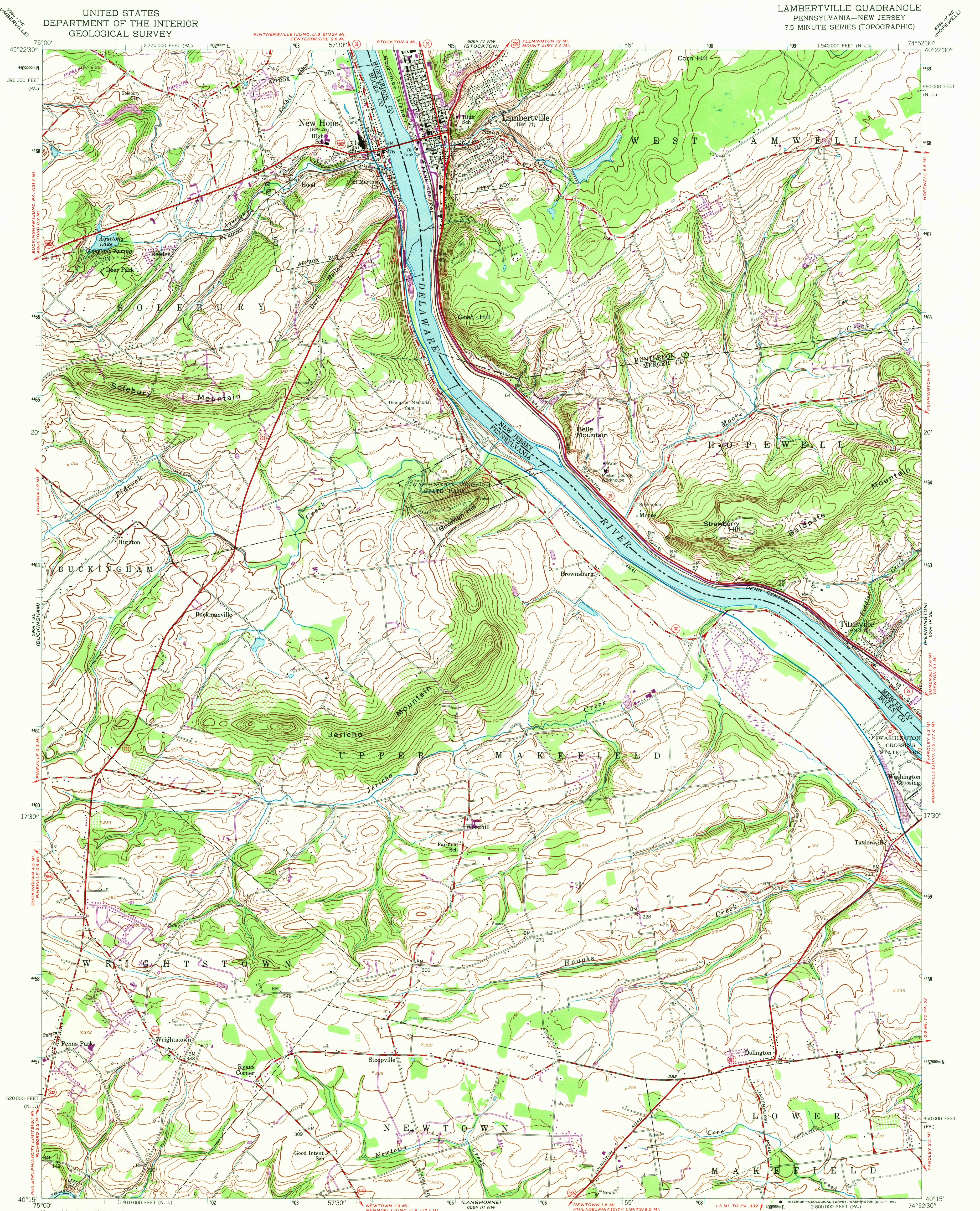
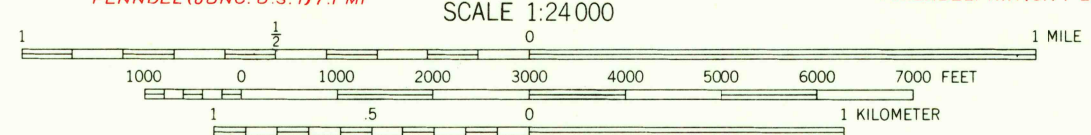
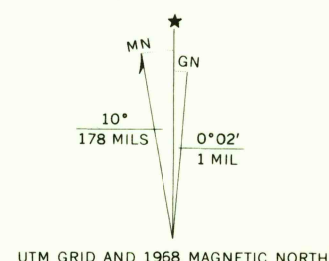


UNITED STATES
DEPARTMENT OF THE INTERIOR
GEOLOGICAL SURVEY

LAMBERTVILLE QUADRANGLE
PENNSYLVANIA—NEW JERSEY
7.5 MINUTE SERIES (TOPOGRAPHIC)



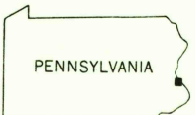
Mapped by Army Map Service
Edited and published by the Geological Survey
Control by USGS, USC&GS, and New Jersey Geodetic Survey
Topography from aerial photographs by stereophotogrammetric methods. Aerial photographs taken 1942
Culture revised by the Geological Survey 1953
Polyconic projection. 1927 North American datum
10,000-foot grids based on Pennsylvania coordinate system, south zone, and New Jersey coordinate system
1000-meter Universal Transverse Mercator grid ticks, zone 18, shown in blue
Revisions shown in purple compiled by Geological Survey in cooperation with State of Pennsylvania agencies, from aerial photographs taken 1968. This information not field checked



CONTOUR INTERVAL 20 FEET
DATUM IS MEAN SEA LEVEL

THIS MAP COMPLIES WITH NATIONAL MAP ACCURACY STANDARDS
FOR SALE BY U.S. GEOLOGICAL SURVEY, WASHINGTON, D.C. 20242
A FOLDER DESCRIBING TOPOGRAPHIC MAPS AND SYMBOLS IS AVAILABLE ON REQUEST

USGS
Historical File
Topographic Division



U.S.G.S.
FILE COPY
TOPOGRAPHIC DIVISION

ROAD CLASSIFICATION
Heavy-duty ——— Light-duty ———
Medium-duty ——— Unimproved dirt ———
U.S. Route ——— State Route ———

LAMBERTVILLE, PA.—N. J.

N4015—W7452.5/7.5
1953
PHOTOREVISED 1968
AMS 6064 IV SW—SERIES V831

JUL 2 1969