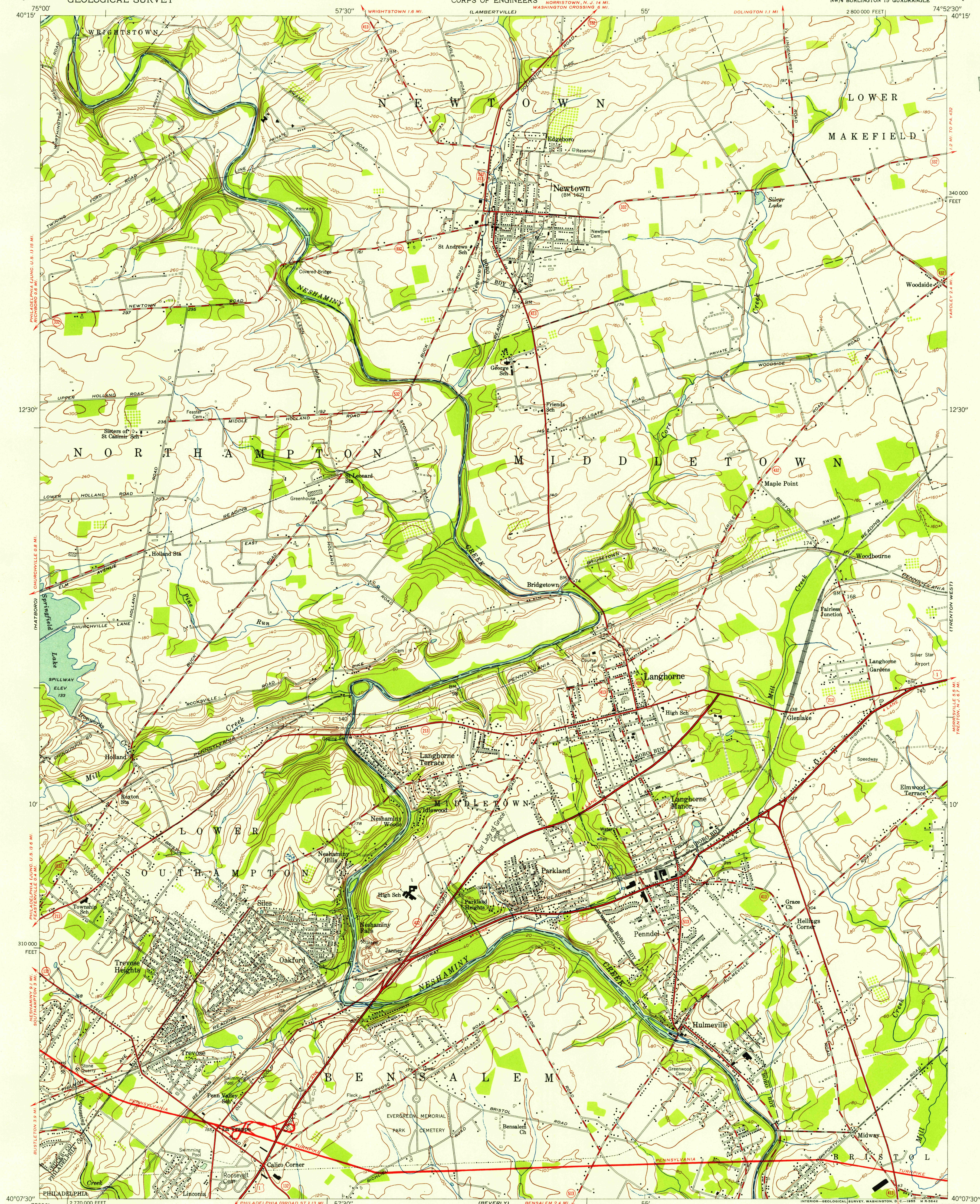


UNITED STATES
DEPARTMENT OF THE INTERIOR
GEOLOGICAL SURVEY

UNITED STATES
DEPARTMENT OF THE ARMY
CORPS OF ENGINEERS

LANGHORNE QUADRANGLE
PENNSYLVANIA
7.5 MINUTE SERIES (TOPOGRAPHIC)
NW/4 BURLINGTON 15' QUADRANGLE

U.S.G.S.
FILE COPY
TOPOGRAPHIC DIVISION

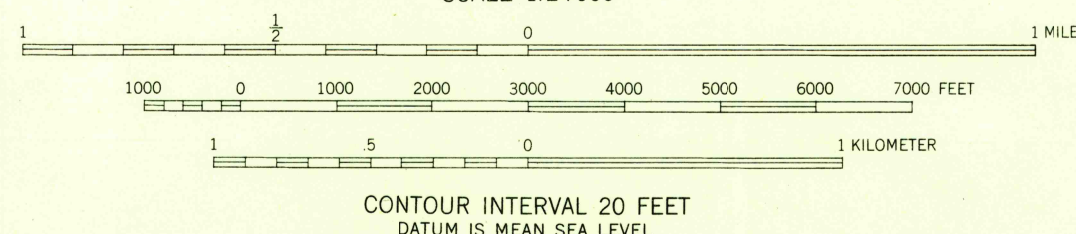


Mapped by Army Map Service
Edited and published by the Geological Survey
Control by USC&GS

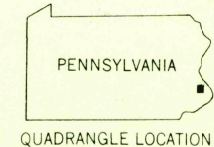
Topography from aerial photographs by stereophotogrammetric methods. Aerial photographs taken 1942
Culture revised by the Geological Survey 1953

Polycyclic projection. 1927 North American datum
10,000-foot grid based on Pennsylvania coordinate system,
south zone

10°
TRUE NORTH
MAGNETIC NORTH
APPROXIMATE MEAN
DECLINATION, 1953



USCS
Historical File
Topographic Division



ROAD CLASSIFICATION
Heavy-duty ——— 4 LANE 6 LANE Light-duty ———
Medium-duty ——— 4 LANE 6 LANE Unimproved dirt ———
U. S. Route ——— State Route ———

LANGHORNE, PA.
NW/4 BURLINGTON 15' QUADRANGLE
N4007.5-W7452.5/7.5

1953

U.S.G.S.
FILE COPY
TOPOGRAPHIC DIVISION

JAN 21 1955

THIS MAP COMPLIES WITH NATIONAL MAP ACCURACY STANDARDS
FOR SALE BY U. S. GEOLOGICAL SURVEY, WASHINGTON 25, D. C.
A FOLDER DESCRIBING TOPOGRAPHIC MAPS AND SYMBOLS IS AVAILABLE ON REQUEST