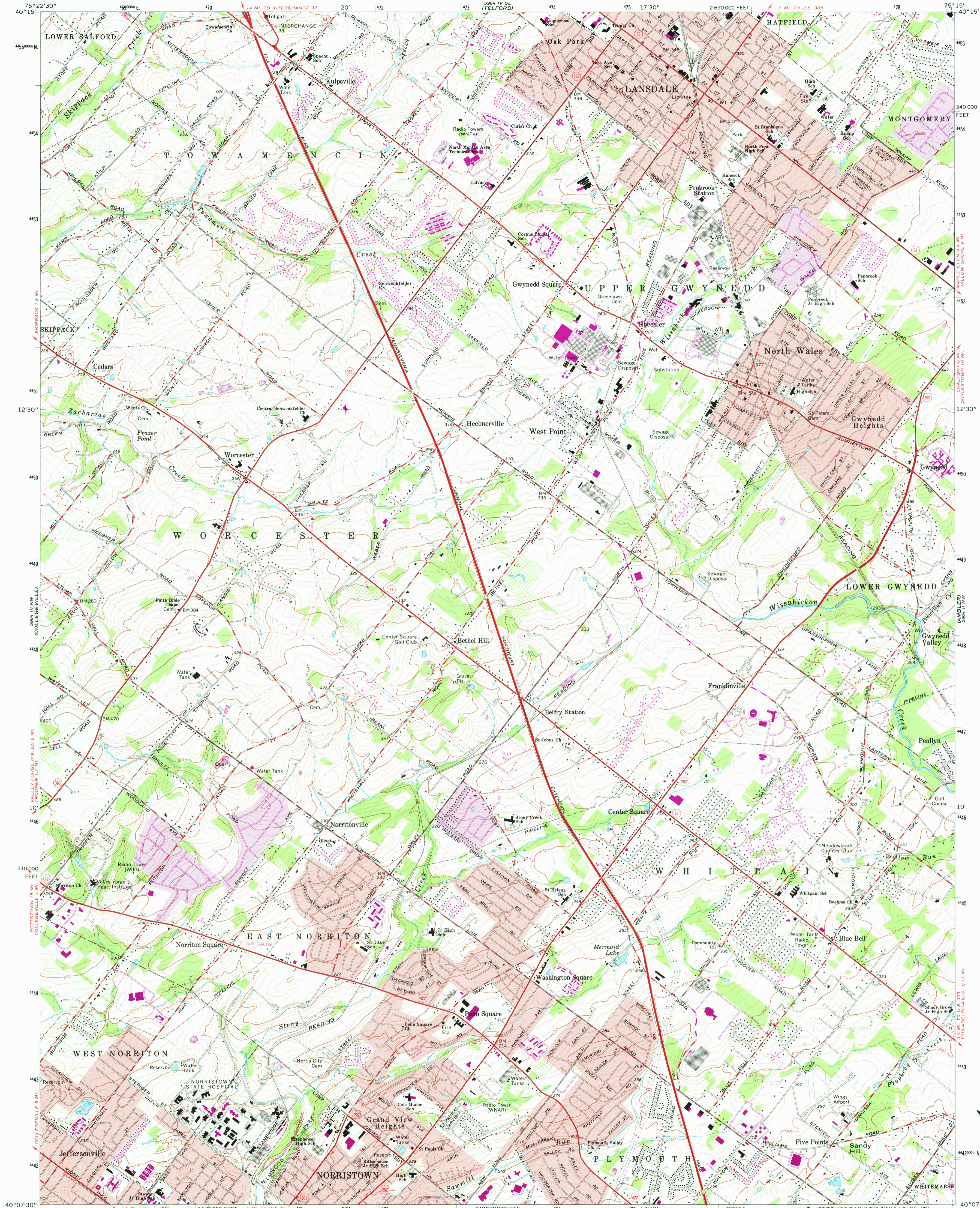


UNITED STATES  
DEPARTMENT OF THE INTERIOR  
GEOLOGICAL SURVEY

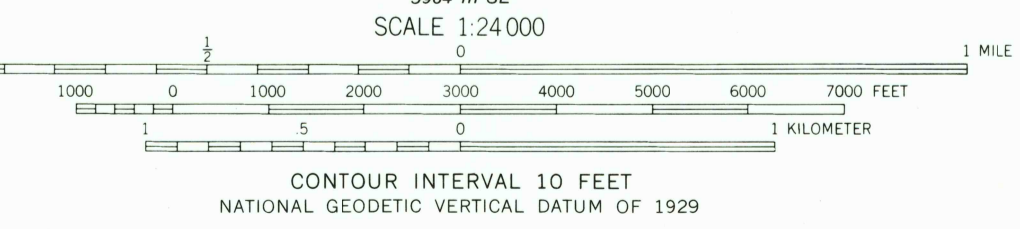
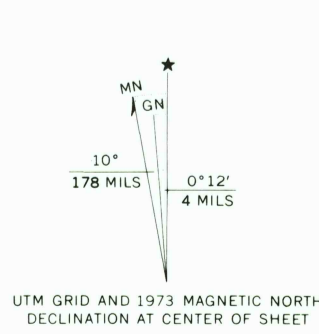
LANSDALE QUADRANGLE  
PENNSYLVANIA—MONTGOMERY CO.  
7.5 MINUTE SERIES (TOPOGRAPHIC)



USGS  
Historical File  
National Mapping D

MAR 25 1981  
3500

Mapped, edited, and published by the Geological Survey  
in cooperation with Pennsylvania Department of Internal  
Affairs, Topographic and Geologic Survey  
Control by USGS and USC&GS  
Topography by photogrammetric methods from aerial photographs  
taken 1950. Field checked 1951. Revised from aerial  
photographs taken 1965. Field checked 1966  
Polyconic projection, 10,000-foot grid ticks based on  
Pennsylvania coordinate system, south zone  
1000-meter Universal Transverse Mercator grid ticks  
zone 18, shown in blue. 1927 North American Datum  
To place on the predicted North American Datum 1983  
move the projection lines 6 meters south and  
31 meters west as shown by dashed corner ticks  
Red tint indicates areas in which only  
landmark buildings are shown



ROAD CLASSIFICATION  
Heavy-duty ——— Light-duty ———  
Medium-duty ——— Unimproved dirt ———  
U.S. Route ——— State Route ———

LANSDALE, PA.  
N4007.5—W7515/7.5  
1966  
PHOTOREVISED 1973  
AMS 5964 III NE—SERIES V831

THIS MAP COMPLIES WITH NATIONAL MAP ACCURACY STANDARDS  
FOR SALE BY U.S. GEOLOGICAL SURVEY, RESTON, VIRGINIA 22092  
A FOLDER DESCRIBING TOPOGRAPHIC MAPS AND SYMBOLS IS AVAILABLE ON REQUEST

Revisions shown in purple compiled from aerial photographs  
taken 1973. This information not field checked  
Purple tint indicates extension of urban areas