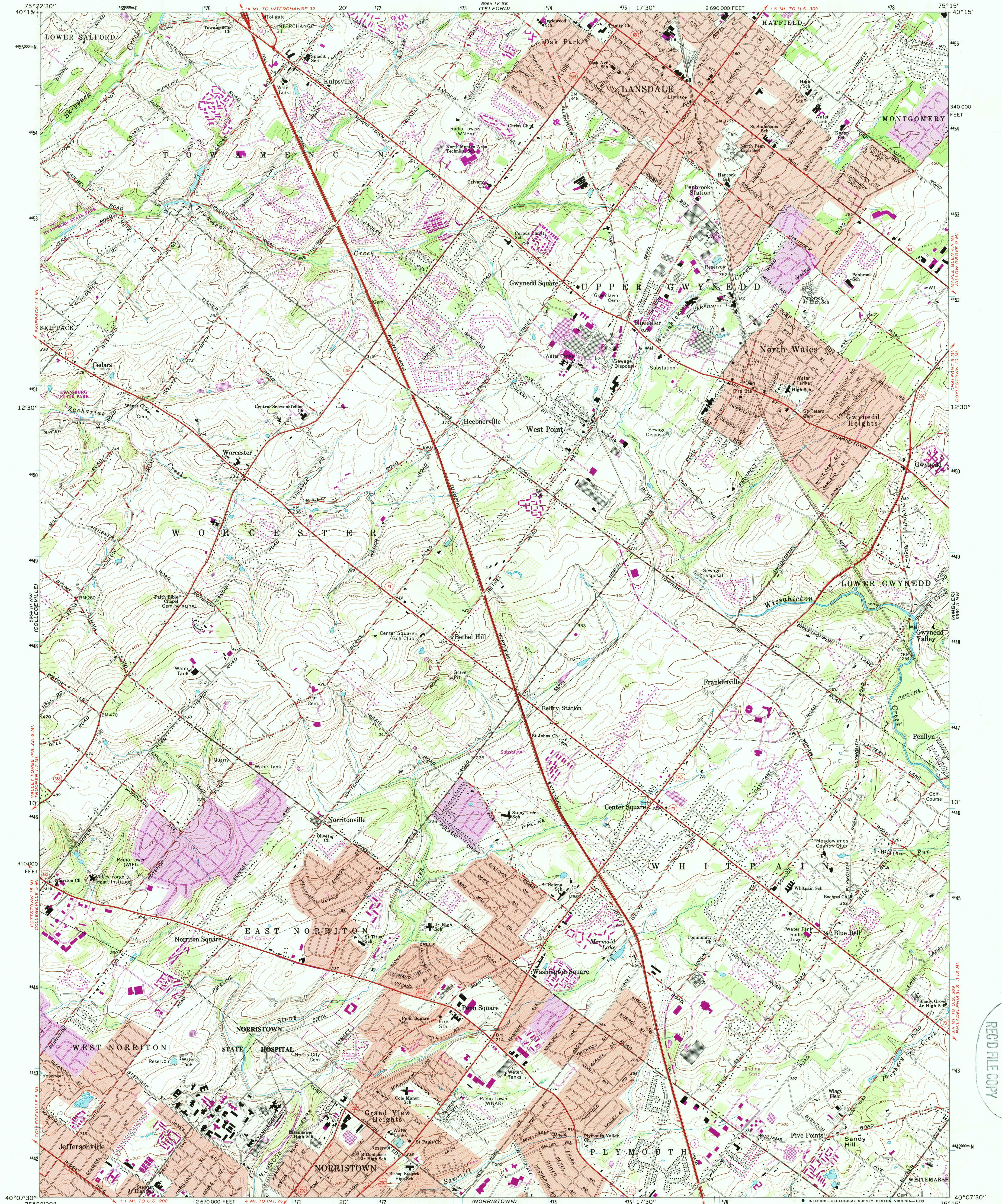


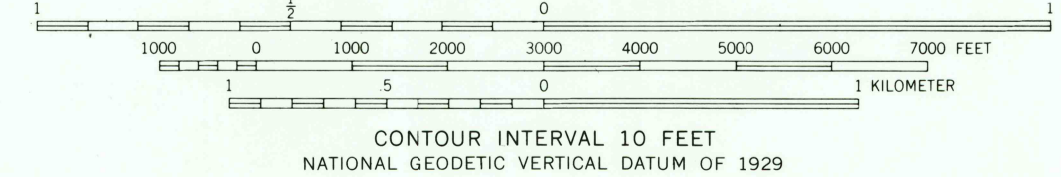
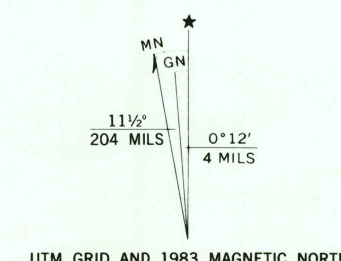
UNITED STATES
DEPARTMENT OF THE INTERIOR
GEOLOGICAL SURVEY

LANSDALE QUADRANGLE
PENNSYLVANIA—MONTGOMERY CO.
7.5 MINUTE SERIES (TOPOGRAPHIC)

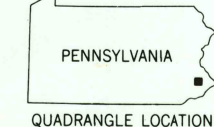


USGS HISTORICAL MAP
JUL 29 1988
REC'D FILE COPY

Mapped, edited, and published by the Geological Survey
in cooperation with Pennsylvania Department of Internal
Affairs, Topographic and Geologic Survey
Control by USGS and NOS/NOAA
Topography by photogrammetric methods from aerial photographs
taken 1950. Field checked 1951. Revised from aerial
photographs taken 1965. Field checked 1966
Polyconic projection. 10,000-foot grid ticks based on
Pennsylvania coordinate system, south zone
1000-meter Universal Transverse Mercator grid ticks,
zone 18, shown in blue. 1927 North American Datum
To place on the predicted North American Datum 1983
move the projection lines 6 meters south and
31 meters west as shown by dashed corner ticks
Fine red dashed lines indicate selected fence and field lines where
generally visible on aerial photographs. This information is unchecked
Red tint indicates areas in which only landmark buildings are shown
There may be private inholdings within the boundaries of
the National or State reservations shown on this map



THIS MAP COMPLIES WITH NATIONAL MAP ACCURACY STANDARDS
FOR SALE BY U.S. GEOLOGICAL SURVEY
DENVER, COLORADO 80225, OR RESTON, VIRGINIA 22092
A FOLDER DESCRIBING TOPOGRAPHIC MAPS AND SYMBOLS IS AVAILABLE ON REQUEST



ROAD CLASSIFICATION
Heavy-duty ——— Light-duty ———
Medium-duty ——— Unimproved dirt ———
U.S. Route ——— State Route ———

LANSDALE, PA.

40075-B3-TF-024

1966
PHOTOREVISED 1983
DMA 5964 III NE—SERIES V631

Revisions shown in purple and woodland compiled from
aerial photographs taken 1981 and other sources
This information not field checked. Map edited 1983
Purple tint indicates extension of urban areas