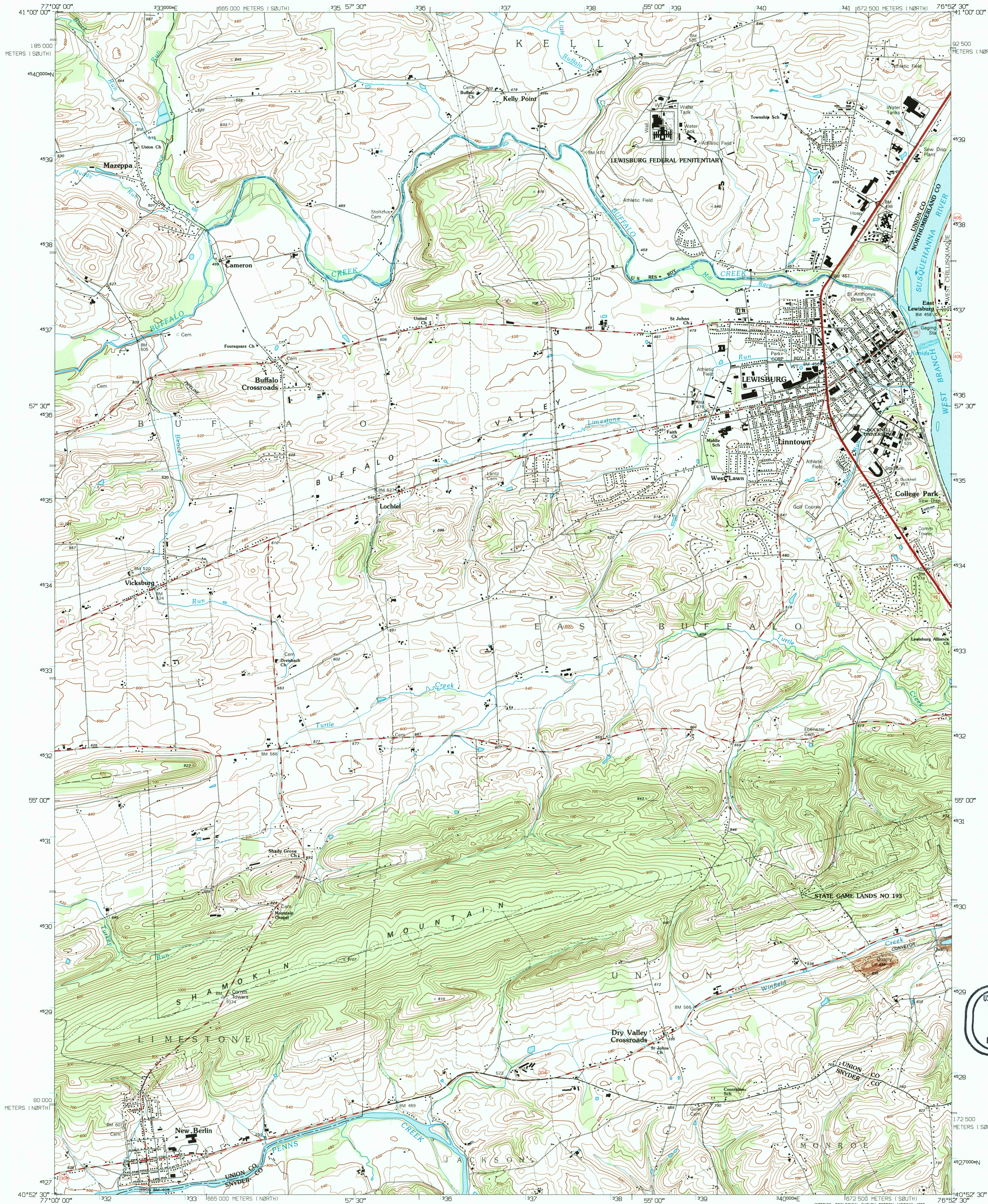


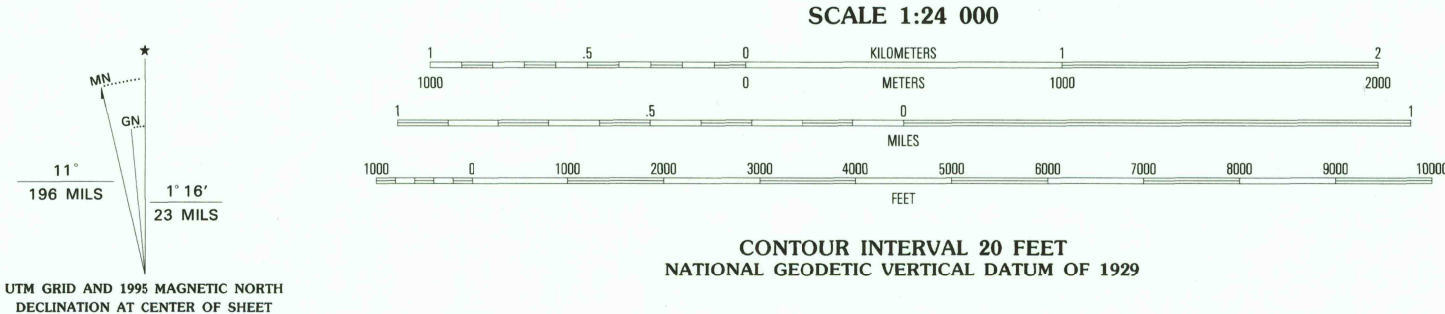
UNITED STATES
DEPARTMENT OF THE INTERIOR
GEOLOGICAL SURVEY

LEWISBURG QUADRANGLE
PENNSYLVANIA
7.5-MINUTE SERIES (TOPOGRAPHIC)



USGS NHD HISTORICAL
MAP ARCHIVES
DEC 1 1 1995
REC'D FILE COPY

Produced by the United States Geological Survey
in cooperation with Commonwealth of Pennsylvania agencies
Compiled by photogrammetric methods from imagery dated 1963
Field checked 1965. Revised from imagery dated 1988 and
other sources. Field checked 1994. Map edited 1995
North American Datum of 1983 (NAD 83). Projection and
blue 1000-meter ticks: Universal Transverse Mercator, zone 18
2 500-meter ticks: Pennsylvania coordinate system of 1983
(north and south zones)
North American Datum of 1927 (NAD 27) is shown by dashed
corner ticks. The values of the shift between NAD 27 and NAD 83
for 7.5-minute intersections are obtainable from National Geodetic
Survey NADCON software
There may be private inholdings within the boundaries of
the National or State reservations shown on this map



ROAD CLASSIFICATION

Primary highway
hard surface
Secondary highway
hard surface
Interstate Route
U.S. Route
State Route

Light-duty road, hard or
improved surface
Unimproved road

QUADRANGLE LOCATION

1	2	3
4	5	6
7	8	

1 Williamsport SE
2 Allenwood
3 Milton
4 Millburg
5 Northumberland
6 Middleburg
7 Freeburg
8 Sunbury

LEWISBURG, PA
40076-H8-TF-024
1994
DMA 5665 IV NW - SERIES V831

THIS MAP COMPLIES WITH NATIONAL MAP ACCURACY STANDARDS
FOR SALE BY U.S. GEOLOGICAL SURVEY
DENVER, COLORADO 80225, OR RESTON, VIRGINIA 22092
A FOLDER DESCRIBING TOPOGRAPHIC MAPS AND SYMBOLS IS AVAILABLE ON REQUEST