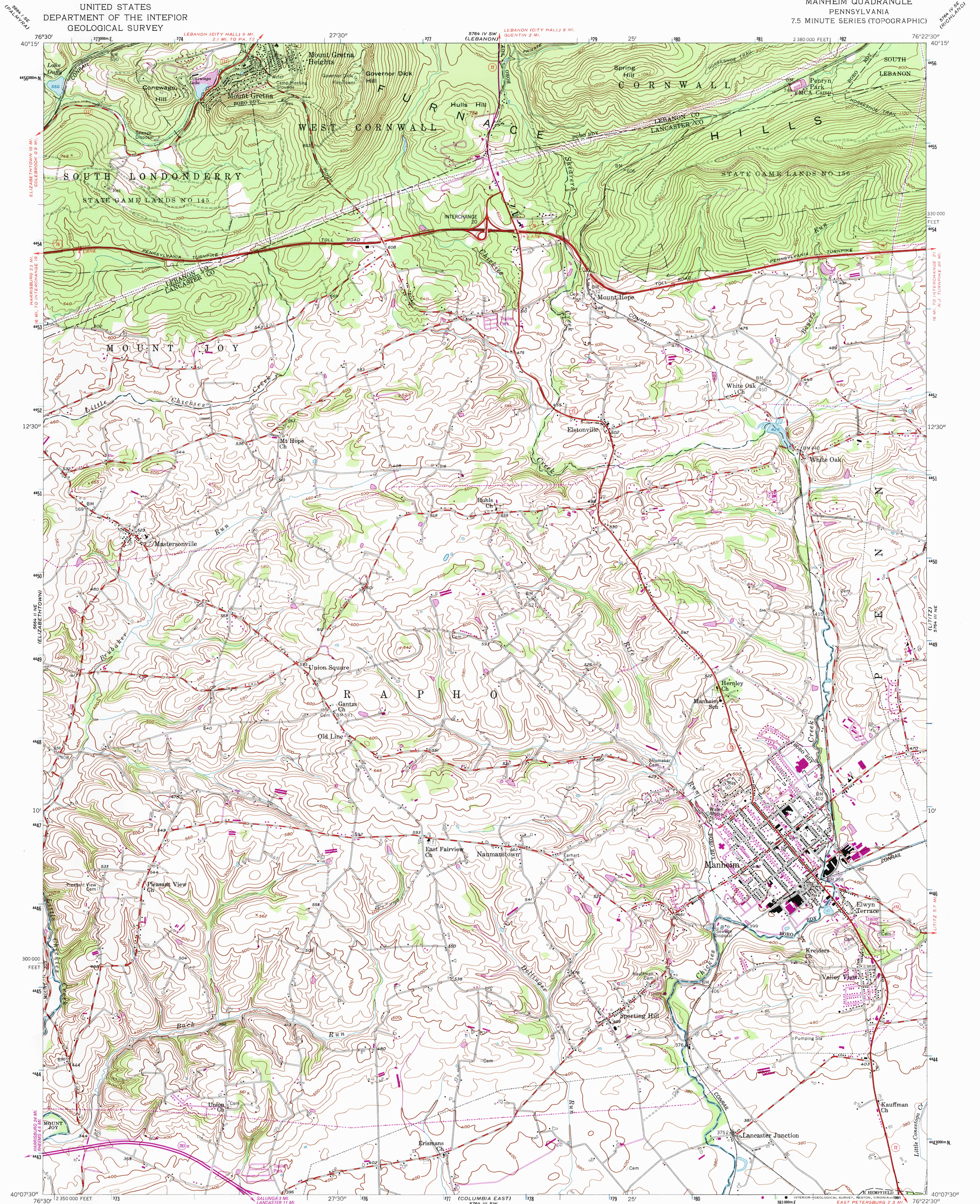


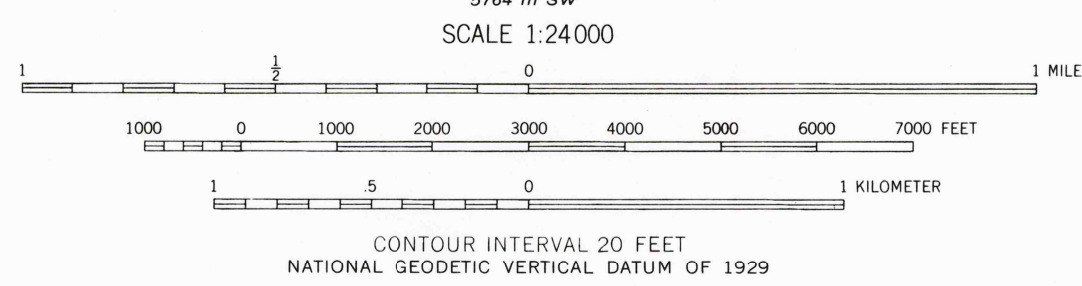
UNITED STATES
DEPARTMENT OF THE INTERIOR
GEOLOGICAL SURVEY

MANHEIM QUADRANGLE
PENNSYLVANIA
7.5 MINUTE SERIES (TOPOGRAPHIC)

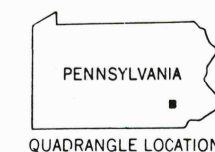


Mapped, edited, and published by the Geological Survey
Control by USGS, USC&GS, and USSCS
Topography from aerial photographs by stereoplanigraph
Aerial photographs taken 1951, Field check 1955
Polyconic projection, 1927 North American datum
10,000-foot grid based on Pennsylvania coordinate system,
south zone
1000-meter Universal Transverse Mercator grid ticks,
zone 18, shown in blue
Unchecked elevations are shown in brown
Revisions shown in purple compiled in cooperation with State of
Pennsylvania agencies from aerial photographs taken 1969 and 1975.
This information not field checked

Map photoinspected 1984
No major culture or drainage changes observed
This information not field checked



THIS MAP COMPLIES WITH NATIONAL MAP ACCURACY STANDARDS
FOR SALE BY U.S. GEOLOGICAL SURVEY
DENVER, COLORADO 80225, OR RESTON, VIRGINIA 22092
A FOLDER DESCRIBING TOPOGRAPHIC MAPS AND SYMBOLS IS AVAILABLE ON REQUEST



ROAD CLASSIFICATION

Heavy-duty	Light-duty
Medium-duty	Unimproved dirt
U.S. Route	State Route
	Interstate Route

MANHEIM, PA.

N 4007.5 - W 7622.5 / 7.5
PHOTOINSPECTED 1984
1955
PHOTOREVISED 1969 AND 1975
AMS 764 III NW-SERIES V831