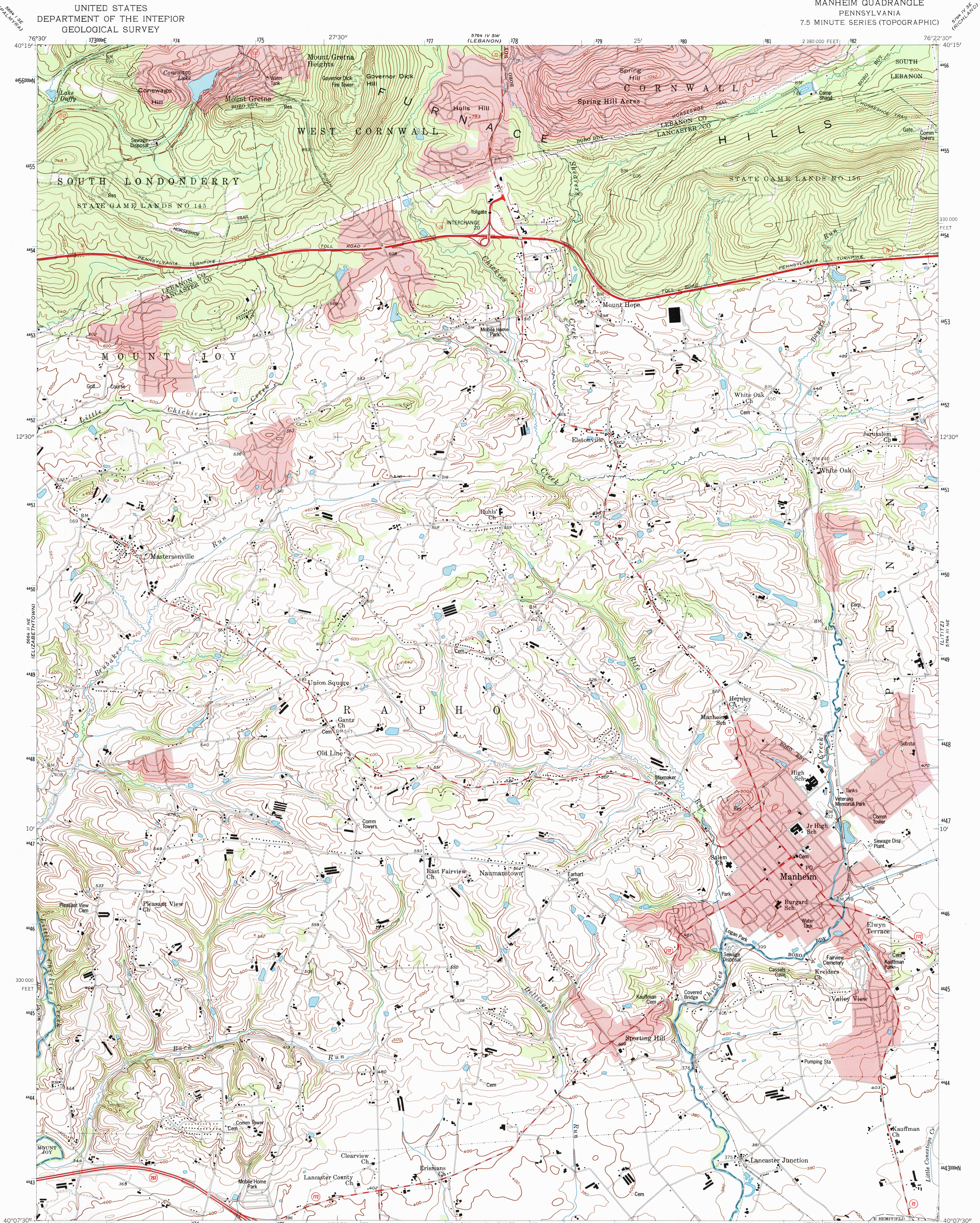


UNITED STATES
DEPARTMENT OF THE INTERIOR
GEOLOGICAL SURVEY

MANHEIM QUADRANGLE
PENNSYLVANIA
7.5 MINUTE SERIES (TOPOGRAPHIC)



Produced by the United States Geological Survey
in cooperation with Commonwealth of Pennsylvania agencies

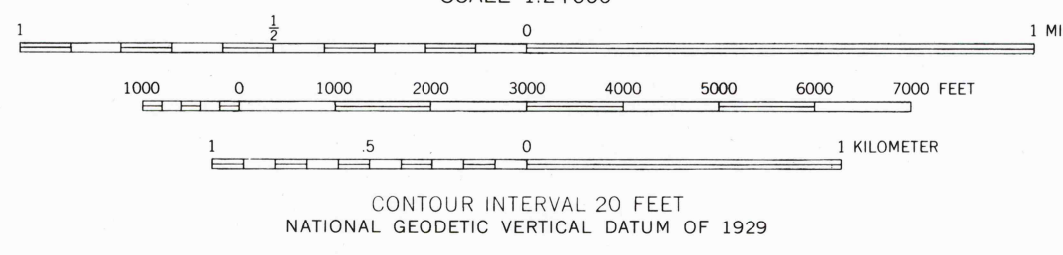
Compiled by photogrammetric methods from imagery dated 1951
Field checked 1955. Revised from imagery dated 1992 and 1994
and other sources. Field checked 1995. Map edited 1996

North American Datum of 1927 (NAD 27). Projection and
10 000-foot ticks: Pennsylvania coordinate system, south zone
(Lambert conformal conic)

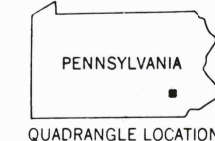
Blue 1 000-meter Universal Transverse Mercator ticks, zone 18
North American Datum of 1983 (NAD 83) is shown by dashed
corner ticks. The values of the shift between NAD 27 and NAD 83
for 7.5-minute intersections are obtainable from National Geodetic
Survey NADCON software

There may be private inholdings within the boundaries of
the National or State reservations shown on this map

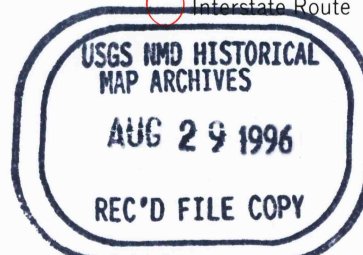
11 1/2°
204 MILS
0°56'
17 MILS
UTM GRID AND 1996 MAGNETIC NORTH
DECLINATION AT CENTER OF SHEET



FOR SALE BY U.S. GEOLOGICAL SURVEY
DENVER, COLORADO 80225, OR RESTON, VIRGINIA 22092
A FOLDER DESCRIBING TOPOGRAPHIC MAPS AND SYMBOLS IS AVAILABLE ON REQUEST



ROAD CLASSIFICATION
Primary highway, hard surface
Secondary highway, hard surface
Unimproved road
Interstate Route
U. S. Route
State Route



MANHEIM, PA
40076-84-TF-024
1995

DMA 5764 III NW-SERIES V831

