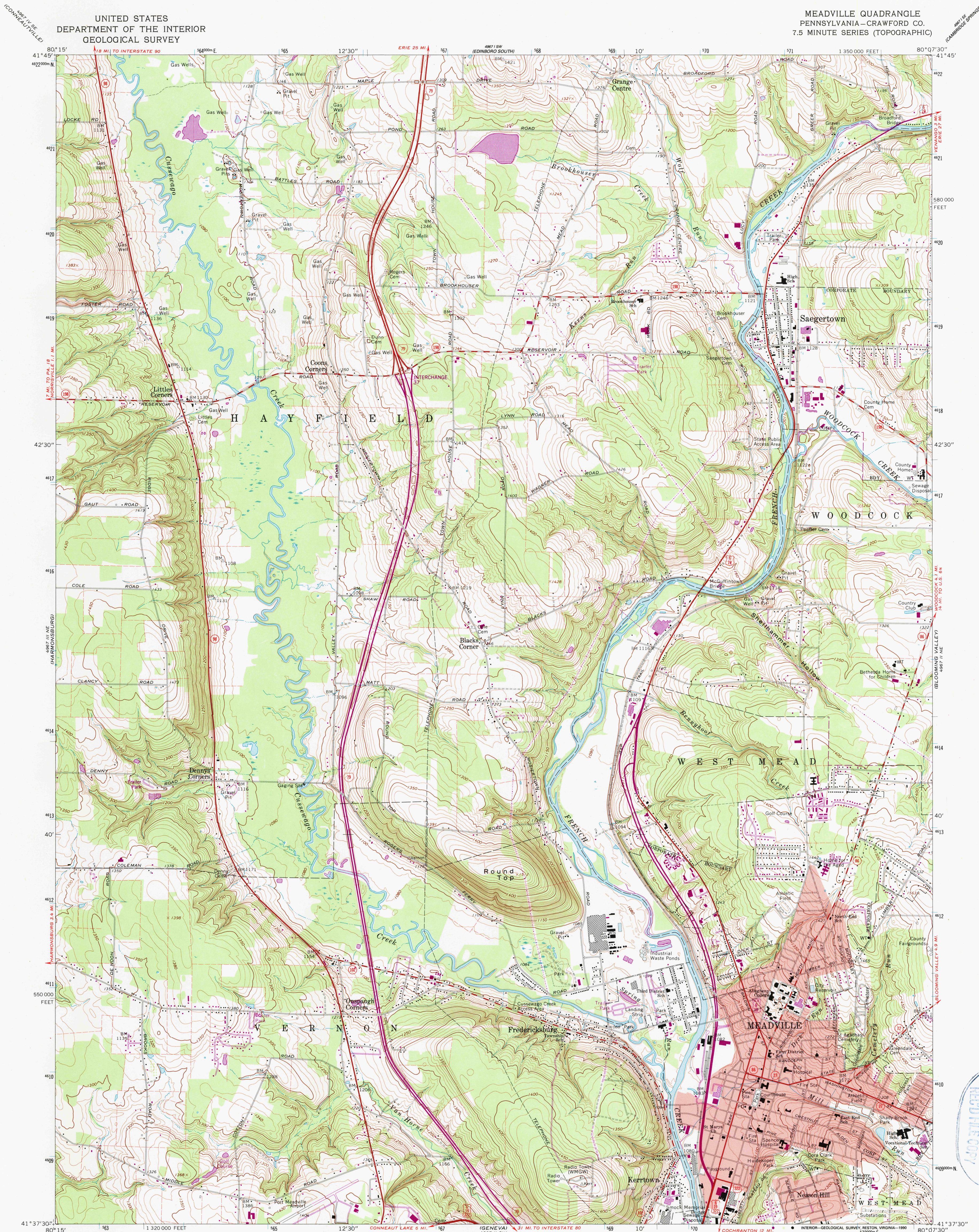
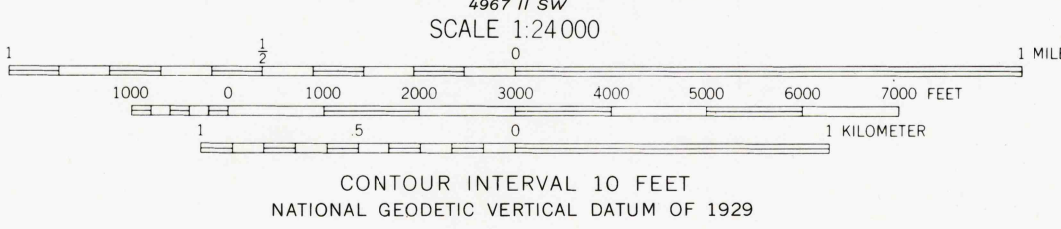
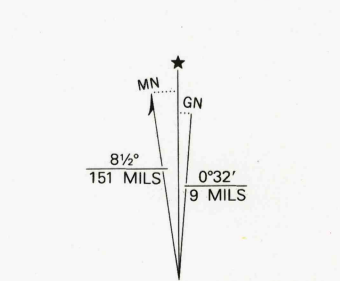


UNITED STATES
DEPARTMENT OF THE INTERIOR
GEOLOGICAL SURVEY

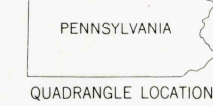
MEADVILLE QUADRANGLE
PENNSYLVANIA—CRAWFORD CO.
7.5 MINUTE SERIES (TOPOGRAPHIC)



Maped, edited, and published by the Geological Survey
Control by USGS, USC&GS, and USCE
Topography by photogrammetric methods from aerial photographs
taken 1964. Field checked 1968.
Polyconic projection. 1927 North American datum
10,000-foot grid based on Pennsylvania coordinate system, north zone
1000-meter Universal Transverse Mercator grid ticks, zone 17,
shown in blue
To place on the predicted North American Datum 1983
move the projection lines 2 meters south and
18 meters west as shown by dashed corner ticks
Fine red dashed lines indicate selected fence and field lines where
generally visible on aerial photographs. This information is unchecked
Red tint indicates areas in which only landmark buildings are shown



ROAD CLASSIFICATION
Primary highway, all weather, improved surface
Secondary highway, all weather, hard surface
Light-duty road, all weather, improved surface
Unimproved road, fair or dry weather
Interstate Route
U. S. Route
State Route



MEADVILLE, PA.
41080-F2-TF-024

1968
PHOTOREVISED 1990
DMA 4967 II NW—SERIES V831

Revisions shown in purple and woodland compiled in cooperation
with Commonwealth of Pennsylvania agencies from aerial photographs
taken 1987 and other sources. This information not field checked
Map edited 1990

SEP 24 1990
REC'D FILE COPY
USGS AND HISTORICAL MAP