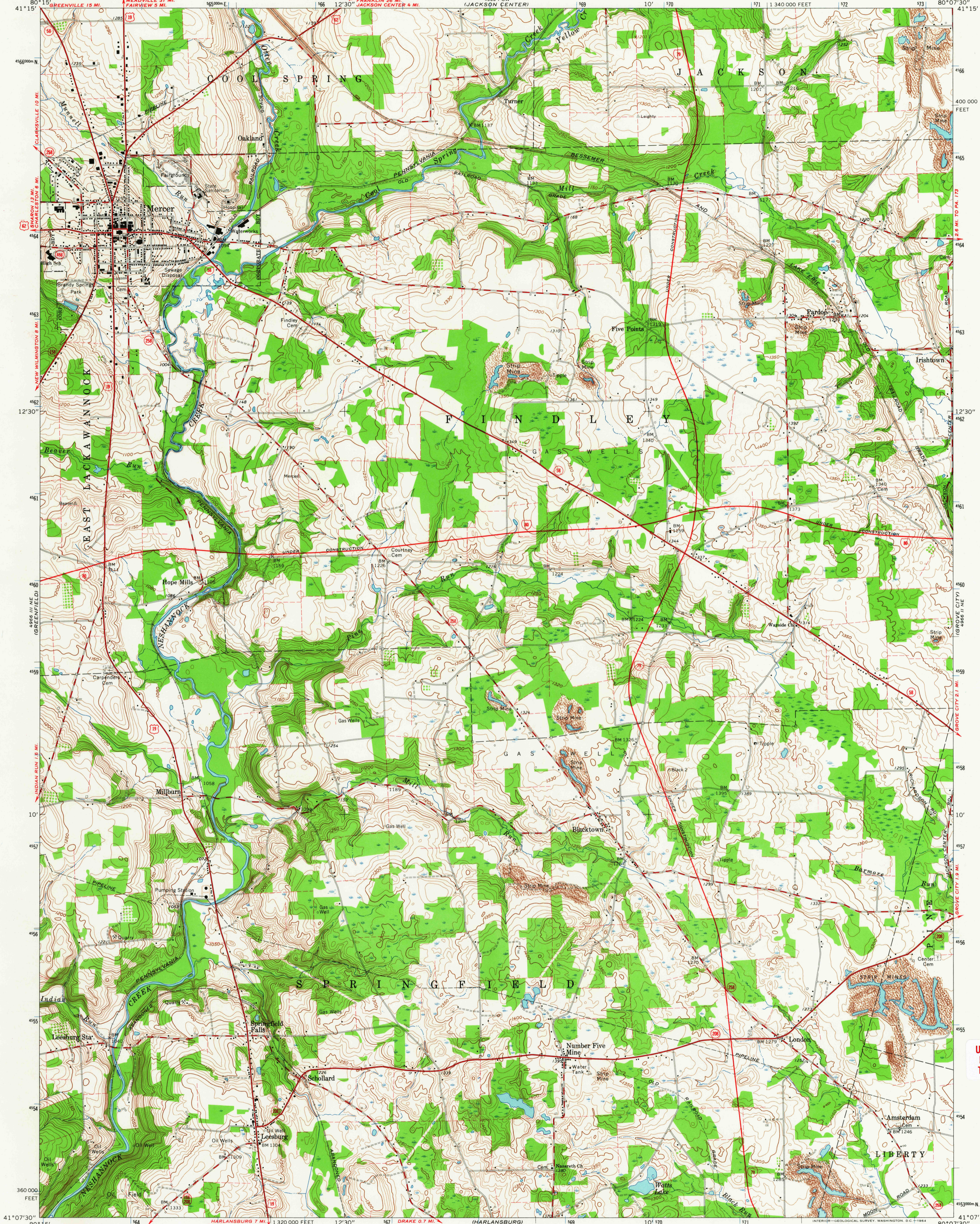


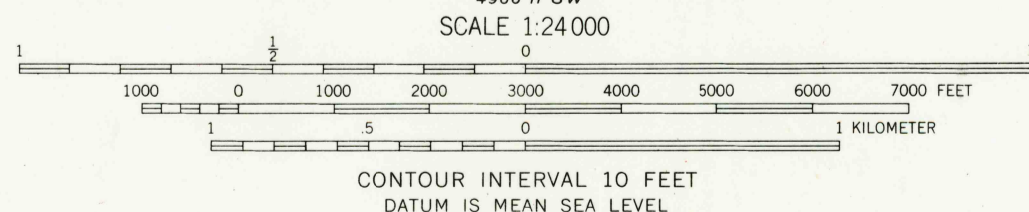
UNITED STATES
DEPARTMENT OF THE INTERIOR
GEOLOGICAL SURVEY

MERCER QUADRANGLE
PENNSYLVANIA—MERCER CO.
7.5 MINUTE SERIES (TOPOGRAPHIC)
NW/4 MERCER 15' QUADRANGLE



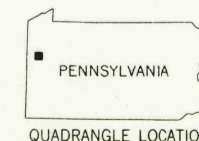
Maped, edited, and published by the Geological Survey
Control by USGS, USC&GS, and Pennsylvania Geodetic Survey
Topography by photogrammetric methods from aerial
photographs taken 1958. Field checked 1961
Polyconic projection. 1927 North American datum
10,000-foot grid based on Pennsylvania coordinate system, north zone
1000-meter Universal Transverse Mercator grid ticks,
zone 17, shown in blue
Fine red dashed lines indicate selected fence and field lines where
generally visible on aerial photographs. This information is unchecked

UTM GRID AND 1961 MAGNETIC NORTH
DECLINATION AT CENTER OF SHEET



THIS MAP COMPLIES WITH NATIONAL MAP ACCURACY STANDARDS
FOR SALE BY U. S. GEOLOGICAL SURVEY, WASHINGTON 25, D. C.
A FOLDER DESCRIBING TOPOGRAPHIC MAPS AND SYMBOLS IS AVAILABLE ON REQUEST

USGS
Historical File
Topographic Division



ROAD CLASSIFICATION
Heavy-duty ——— Light-duty ———
Medium-duty ——— Unimproved dirt ———
Interstate Route U.S. Route State Route

MERCER, PA.
NW/4 MERCER 15' QUADRANGLE
N4107.5—W8007.5/7.5

1961

AMS 4966 II NW—SERIES V831

USGS Library
Reston, VA.
Topo Archive

APR 7 1964