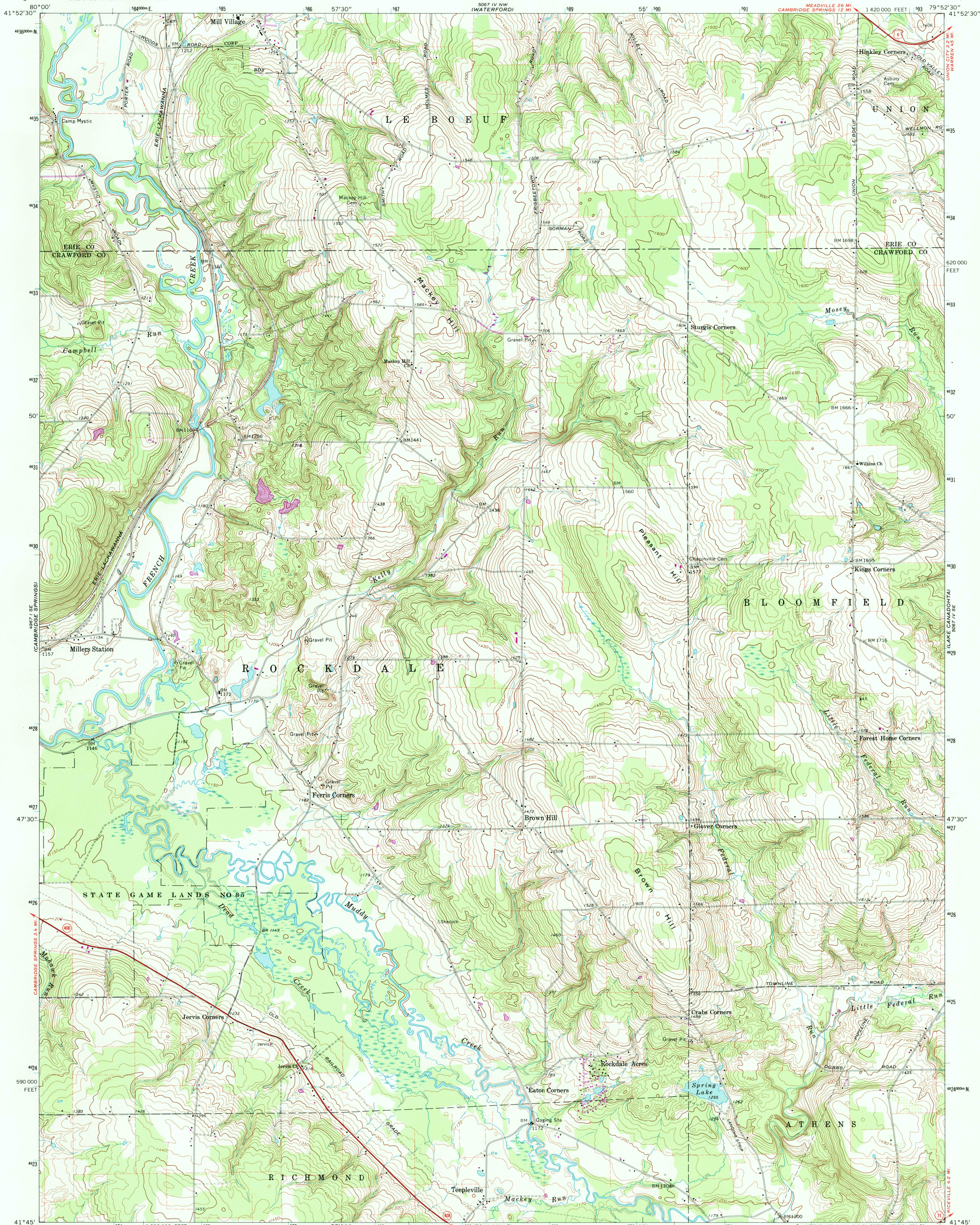


UNITED STATES
DEPARTMENT OF THE INTERIOR
GEOLOGICAL SURVEY

MILLERS STATION QUADRANGLE
PENNSYLVANIA
7.5 MINUTE SERIES (TOPOGRAPHIC)



Mapped, edited, and published by the Geological Survey

Control by USGS and USC&GS

Topography by photogrammetric methods from aerial

photographs taken 1965. Field checked 1967

Polyconic projection. 1927 North American datum

10,000-foot grid based on Pennsylvania coordinate system,

north zone

1000-meter Universal Transverse Mercator grid ticks,

zone 17, shown in blue

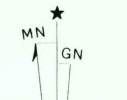
Fine red dashed lines indicate selected fence and field lines where

generally visible on aerial photographs. This information is unchecked

Revisions shown in purple compiled in cooperation with

State of Pennsylvania agencies from aerial photographs

taken 1973. This information not field checked



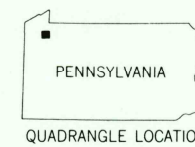
UTM GRID AND 1973 MAGNETIC NORTH
DECLINATION AT CENTER OF SHEET



CONTOUR INTERVAL 10 FEET
NATIONAL GEODETIC VERTICAL DATUM OF 1929

THIS MAP COMPLIES WITH NATIONAL MAP ACCURACY STANDARDS
FOR SALE BY U.S. GEOLOGICAL SURVEY, RESTON, VIRGINIA 22092
A FOLDER DESCRIBING TOPOGRAPHIC MAPS AND SYMBOLS IS AVAILABLE ON REQUEST

Map photoinspected 1977
No major culture or drainage changes observed



QUADRANGLE LOCATION

ROAD CLASSIFICATION	
Primary highway, hard surface	Light-duty road, hard or improved surface
Secondary highway, hard surface	Unimproved road
Interstate Route	U. S. Route
	State Route

MILLERS STATION, PA.

N4145—W7952.5/7.5

PHOTOINSPECTED 1977

1967

PHOTOREVISED 1973

AMS 5067 IV SW—SERIES V831

RETURN TO:
USGS AND HISTORICAL MAP ARCHIVES