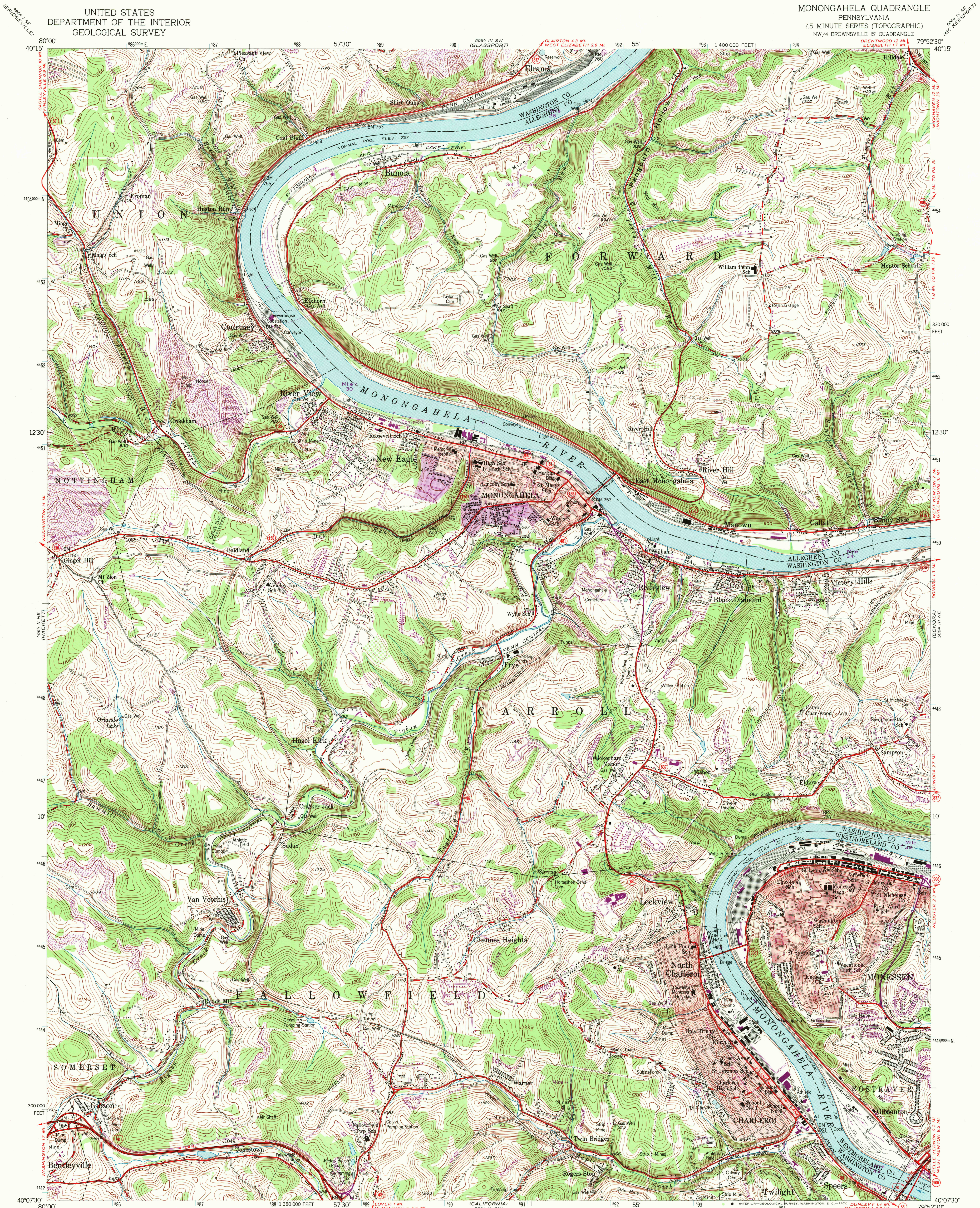


UNITED STATES
DEPARTMENT OF THE INTERIOR
GEOLOGICAL SURVEY

MONONGAHELA QUADRANGLE
PENNSYLVANIA
7.5 MINUTE SERIES (TOPOGRAPHIC)
NW/4 BROWNSVILLE 15' QUADRANGLE



Mapped, edited, and published by the Geological Survey

Control by USGS and USC&GS

Topography from aerial photographs by multiplex methods

Aerial photographs taken 1952. Field check 1954

Polyconic projection. 1927 North American datum
10,000-foot grid based on Pennsylvania coordinate system, south zone
1000-meter Universal Transverse Mercator grid ticks, zone 17,
shown in blue

Red tint indicates areas in which only landmark buildings are shown

Broken contours in strip mine areas indicate mining

since photography

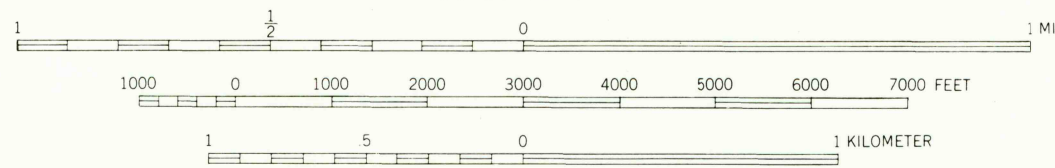
Revisions shown in purple compiled in cooperation with

State of Pennsylvania agencies from aerial photographs taken 1969

This information not field checked

Purple tint indicates extension of urban areas

SCALE 1:24,000



CONTOUR INTERVAL 20 FEET

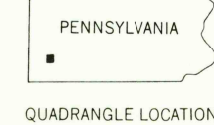
DATUM IS MEAN SEA LEVEL

THIS MAP COMPLIES WITH NATIONAL MAP ACCURACY STANDARDS

FOR SALE BY U. S. GEOLOGICAL SURVEY, WASHINGTON, D. C. 20542

A FOLDER DESCRIBING TOPOGRAPHIC MAPS AND SYMBOLS IS AVAILABLE ON REQUEST

USGS
Historical File
Topographic Division



QUADRANGLE LOCATION

ROAD CLASSIFICATION
Heavy-duty ——— Light-duty ———
Medium-duty ——— Unimproved dirt ———
U. S. Route ——— State Route ———
Interstate Route ———

U.S.G.S.
MONONGAHELA, PA.
NW/4 BROWNSVILLE 15' QUADRANGLE
N4007.5-W7952.5/7.5

FILE COPY
TOPOGRAPHIC DIVISION

1954
PHOTOREVISED 1969
AMS 5064 III NW-SERIES V831

4330
AUG 10 1970