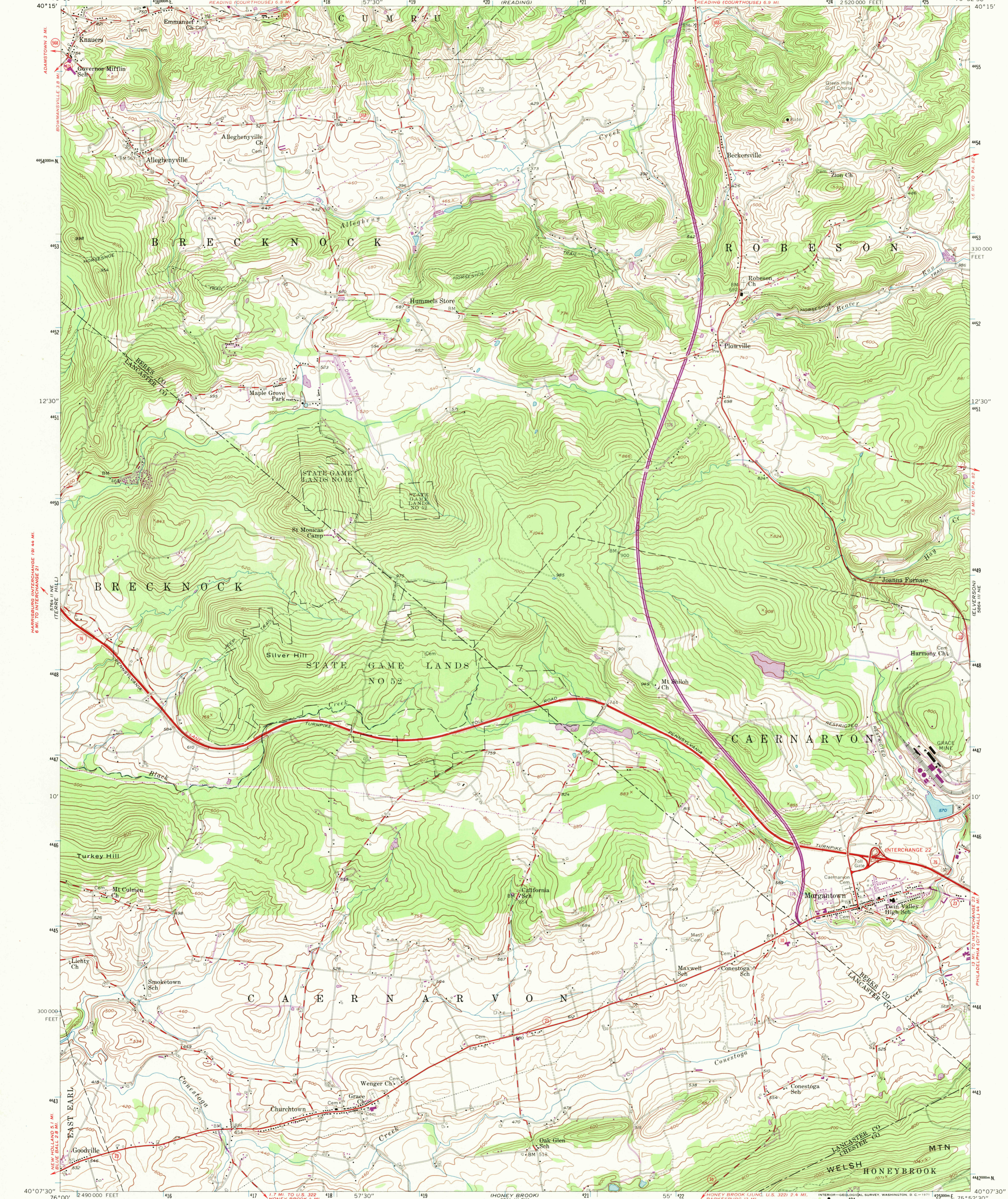


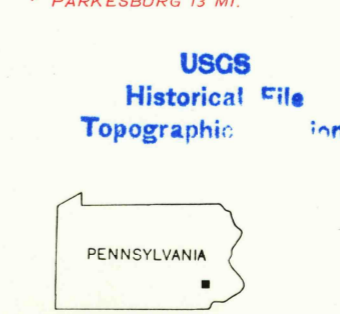
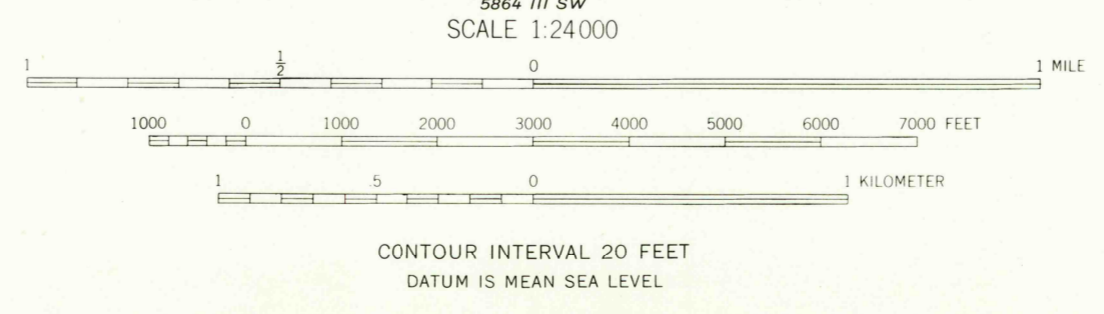
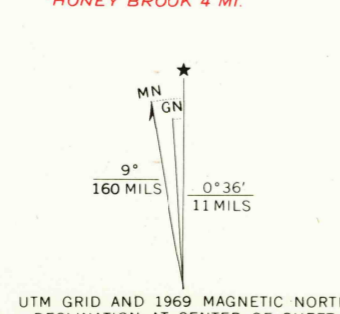
UNITED STATES
DEPARTMENT OF THE INTERIOR
GEOLOGICAL SURVEY

MORGANTOWN QUADRANGLE
PENNSYLVANIA
7.5 MINUTE SERIES (TOPOGRAPHIC)
NW/4 HONEYBROOK 15' QUADRANGLE

5864 IV SE
(BIRDBORO)



Mapped, edited, and published by the Geological Survey
Control by USGS, USC&GS, and USSCS
Topography from aerial photographs by Wild A-6
Aerial photographs taken 1951. Field check 1956
Polyconic projection. 1927 North American datum
10,000-foot grid based on Pennsylvania coordinate system,
south zone
1000-meter Universal Transverse Mercator grid ticks,
zone 18, shown in blue
Unchecked elevations are shown in brown
Revisions shown in purple compiled in cooperation with State of
Pennsylvania agencies from aerial photographs taken 1969. This
information not field checked



ROAD CLASSIFICATION
Heavy-duty — Light-duty —
Medium-duty — Unimproved dirt —
Interstate Route — State Route —

U.S.G.S.
FILE COPY
TOPOGRAPHIC DIVISION

MORGANTOWN, PA.
NW/4 HONEYBROOK 15' QUADRANGLE
N4007.5—W7552.5/7.5
1956
PHOTOREVISED 1969
AMS 5864 III NW—SERIES V831

THIS MAP COMPLIES WITH NATIONAL MAP ACCURACY STANDARDS
FOR SALE BY U.S. GEOLOGICAL SURVEY, WASHINGTON, D.C. 20242
A FOLDER DESCRIBING TOPOGRAPHIC MAPS AND SYMBOLS IS AVAILABLE ON REQUEST

2750
DEC 23 1970