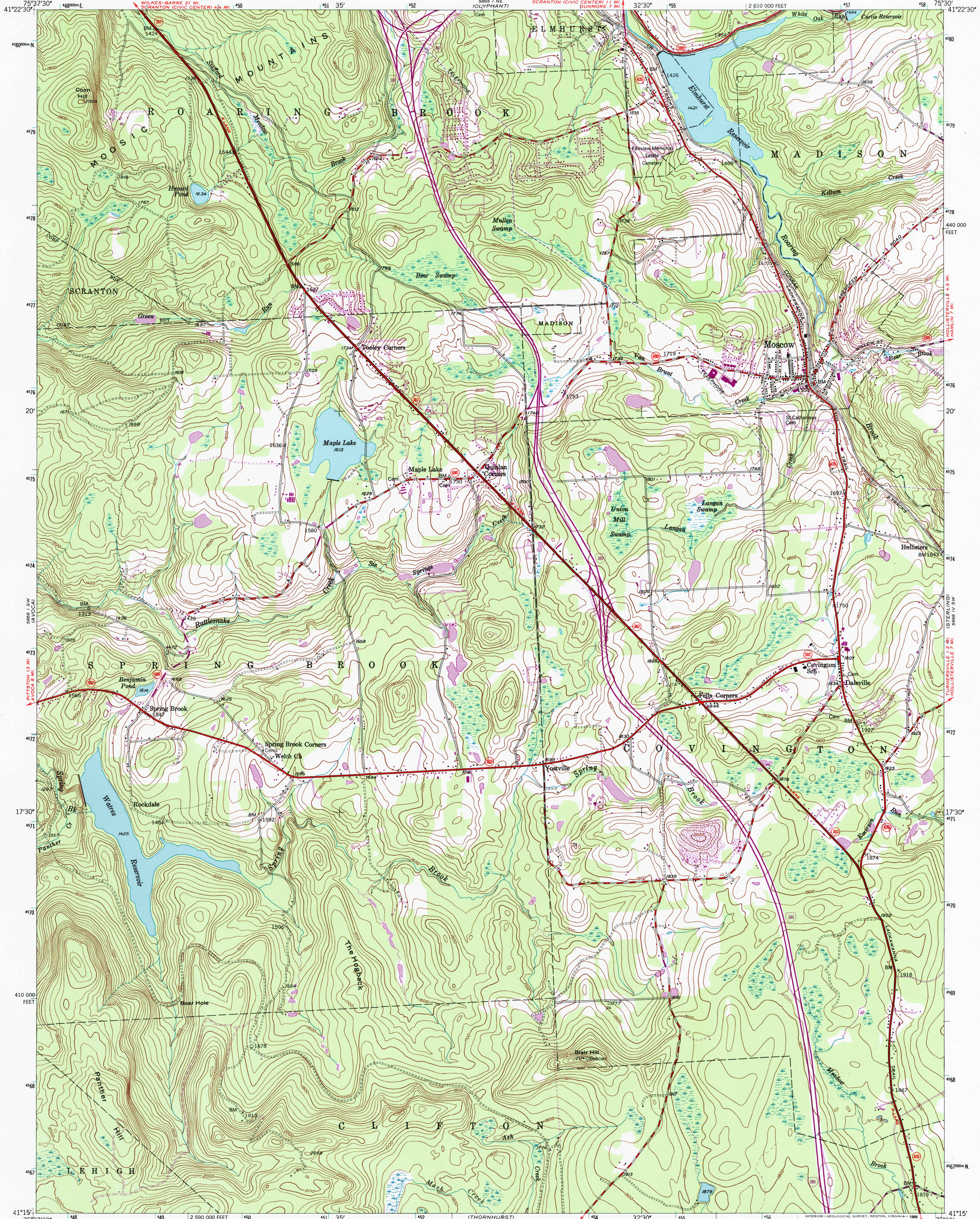


UNITED STATES
DEPARTMENT OF THE INTERIOR
GEOLOGICAL SURVEY

MOSCOW QUADRANGLE
PENNSYLVANIA-LACKAWANNA CO.
7.5 MINUTE SERIES (TOPOGRAPHIC)



Mapped, edited, and published by the Geological Survey

Control by USGS and USC&GS

Topography from aerial photographs by multiplex methods

Aerial photographs taken 1942 Field check, 1946

Polyconic projection, 1927 North American datum

10,000-foot grid based on Pennsylvania coordinate system,

north zone.

1000-meter Universal Transverse Mercator grid ticks,

zone 18, shown in blue

Revisions shown in purple compiled in cooperation with

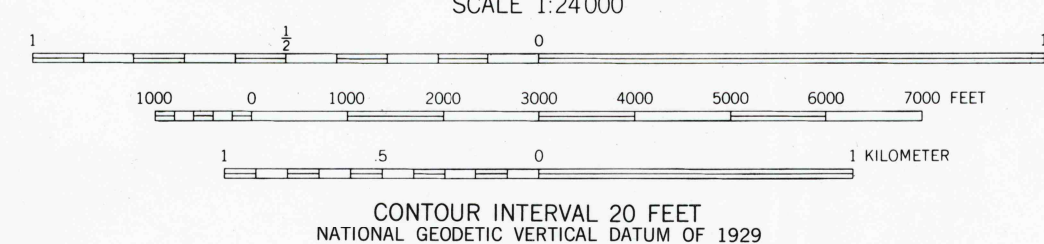
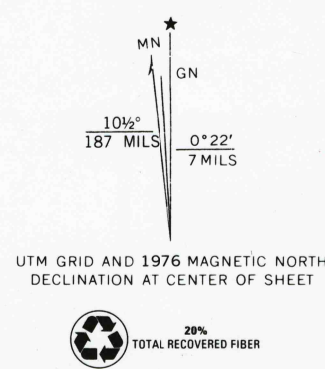
State of Pennsylvania agencies, from aerial photographs

taken 1969 and 1976. This information not field checked

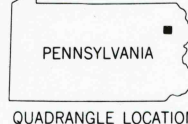
To place on the predicted North American Datum 1983,

move the projection lines 5 meters south and

31 meters west as shown by dashed corner ticks



THIS MAP COMPLIES WITH NATIONAL MAP ACCURACY STANDARDS
FOR SALE BY U. S. GEOLOGICAL SURVEY, DENVER, COLORADO 80225, OR RESTON, VIRGINIA 22092
A FOLDER DESCRIBING TOPOGRAPHIC MAPS AND SYMBOLS IS AVAILABLE ON REQUEST



ROAD CLASSIFICATION	
Heavy-duty	Light-duty
Medium-duty	Unimproved dirt
Interstate Route	U. S. Route
	State Route

RECEIVED
NOV 30 1993

USGS NHD
HISTORICAL MAP ARCHIVES

MOSCOW, PA.
41075-C5-TF-024

1946
PHOTOREVISED 1969 AND 1976
DMA 5866 1 SE-SERIES V831

