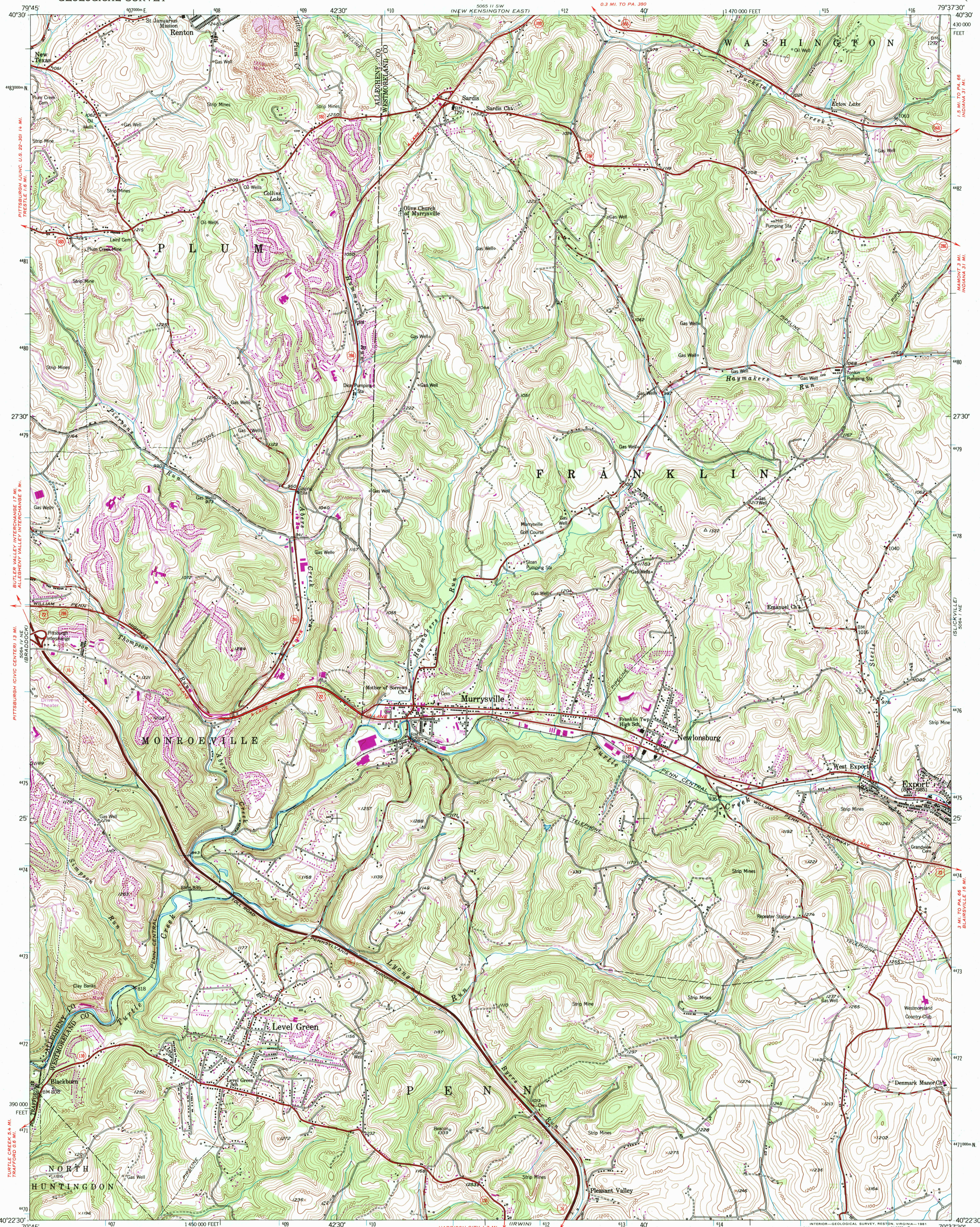


UNITED STATES  
DEPARTMENT OF THE INTERIOR  
GEOLOGICAL SURVEY

MURRYSVILLE QUADRANGLE  
PENNSYLVANIA  
7.5 MINUTE SERIES (TOPOGRAPHIC)



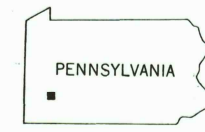
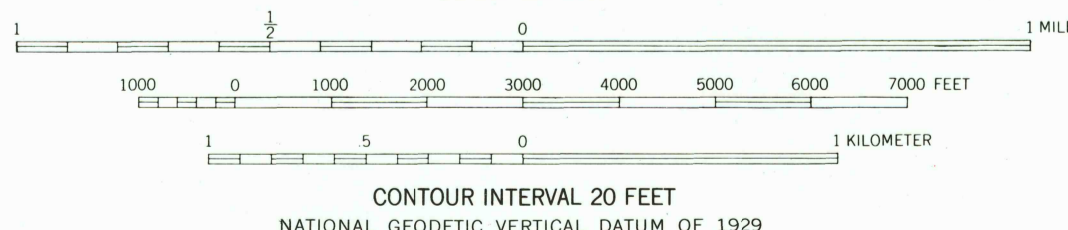
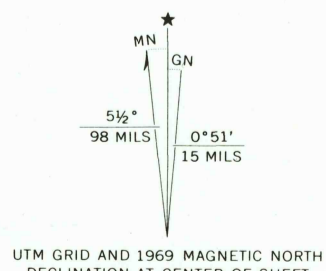
Mapped, edited, and published by the Geological Survey

Control by USGS and USC&GS

Topography by photogrammetric methods from aerial photographs taken 1952. Field checked 1953

Polyconic projection. 10,000-foot grid ticks based on Pennsylvania coordinate system, south zone. 1000-meter Universal Transverse Mercator grid ticks, zone 17, shown in blue. 1927 North American Datum. To place on the predicted North American Datum 1983 move the projection lines 4 meters south and 19 meters west as shown by dashed corner ticks

Revisions shown in purple compiled in cooperation with State of Pennsylvania agencies, from aerial photographs taken 1969. This information not field checked



QUADRANGLE LOCATION

Map photocopied 1977. No major culture or drainage changes observed

ROAD CLASSIFICATION  
Heavy-duty ——— Light-duty ———  
Medium-duty ——— Unimproved dirt ———

U.S. Route ——— State Route ———

Interstate Route ———

MURRYSVILLE, PA.

N4022.5-W7937.5/7.5  
PHOTOINSPECTED 1977  
1953  
PHOTOREVISED 1969  
AMS 5064 1 NW-SERIES V831

