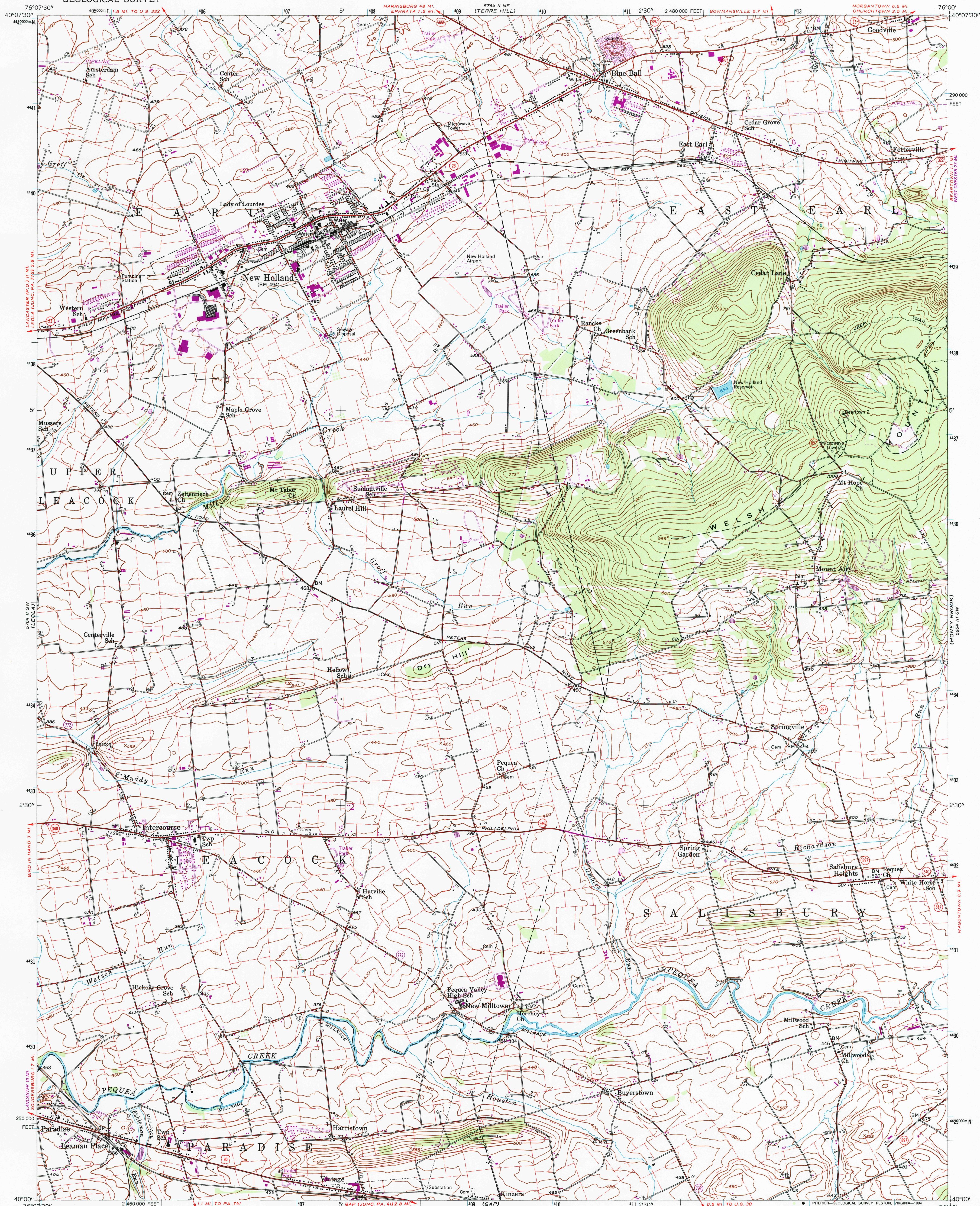
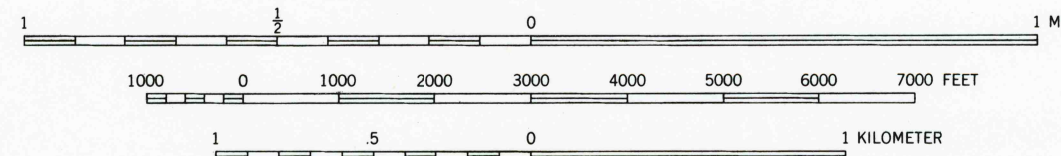
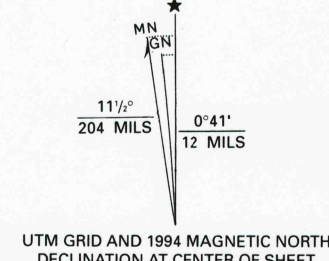


UNITED STATES
DEPARTMENT OF THE INTERIOR
GEOLOGICAL SURVEY

NEW HOLLAND QUADRANGLE
PENNSYLVANIA—LANCASTER CO.
7.5 MINUTE SERIES (TOPOGRAPHIC)



Produced by the U. S. Geological Survey
Control by USGS and NOS/NOAA
Compiled from imagery dated 1991. Photoinspected using
imagery dated 1992; no major culture or drainage changes
observed. PLSS and survey control current as of 1995.
Boundaries and names revised 1994.
North American Datum of 1927 (NAD 27). Projection and
10 000-foot ticks: Pennsylvania coordinate system, south zone
(Lambert conformal conic).
Blue 1000-meter Universal Transverse Mercator grid ticks, zone 18
North American Datum of 1983 (NAD 83) is shown by dashed
corner ticks. The values of the shift between NAD 27 and NAD 83
for 7.5-minute intersections are obtainable from National Geodetic
Survey NADCON software.
Unchecked elevations are shown in brown.
Fine red dashed lines indicate selected fence and field lines
visible on aerial photographs. This information is unchecked.
Revisions shown in purple compiled by the Geological Survey
in cooperation with State of Pennsylvania agencies from aerial
photographs taken 1969 and 1975. This information not field checked.



CONTOUR INTERVAL 20 FEET
NATIONAL GEODETIC VERTICAL DATUM OF 1929
THIS MAP COMPLIES WITH NATIONAL MAP ACCURACY STANDARDS
FOR SALE BY U. S. GEOLOGICAL SURVEY
DENVER, COLORADO 80225 OR RESTON, VIRGINIA 22092
A FOLDER DESCRIBING TOPOGRAPHIC MAPS AND SYMBOLS IS AVAILABLE ON REQUEST



ROAD CLASSIFICATION
Primary highway, hard surface
Secondary highway, hard surface
Light-duty road, hard or
improved surface
Unimproved road
Interstate Route
U. S. Route
State Route

NEW HOLLAND, PA.
40076-A1-TF-024
1992
DMA 5764 II SE-SERIES V831

USGS AND HISTORICAL
PHOTO ARCHIVES
JAN 23 1995
REC'D FILE COPY