

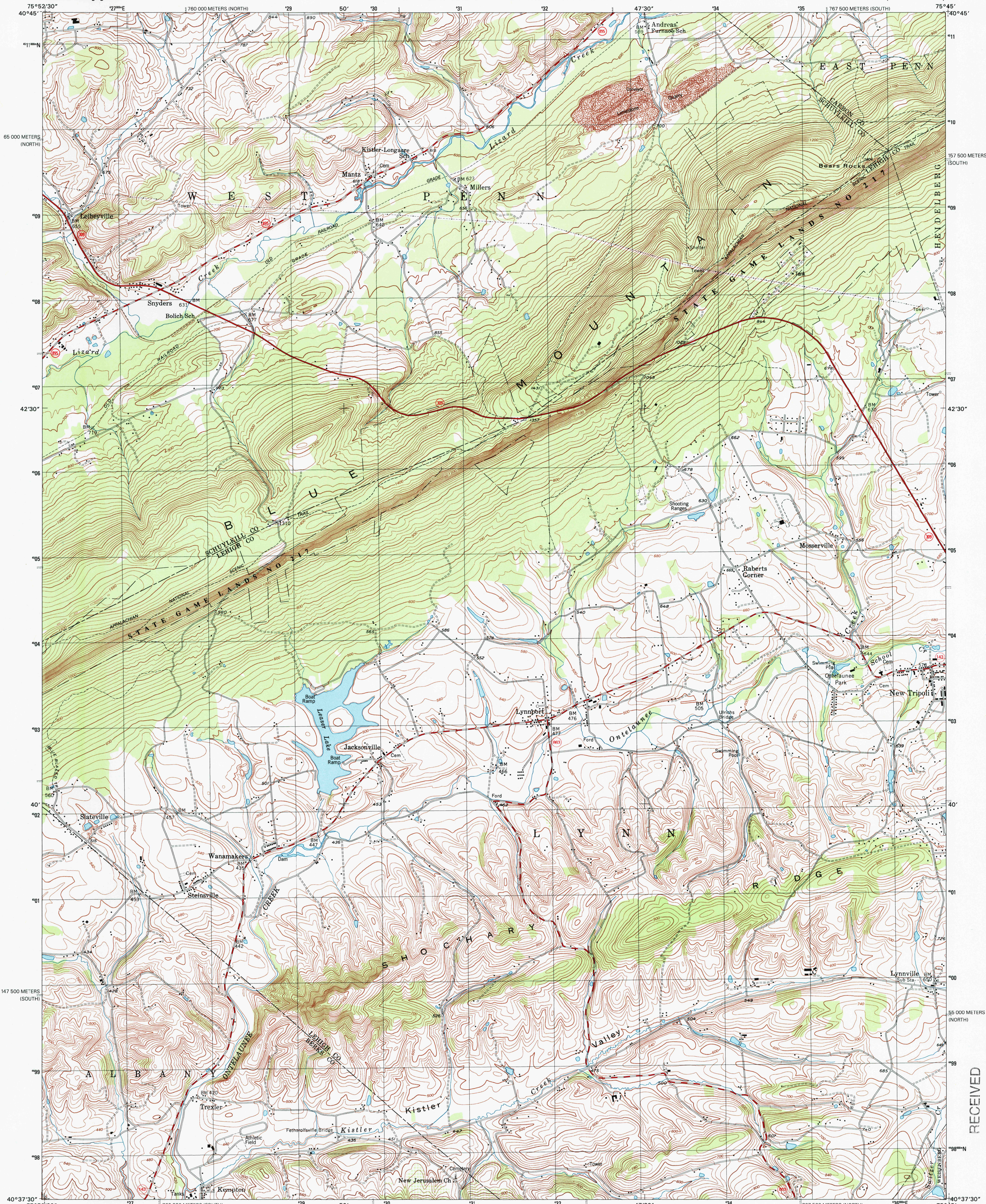


U.S. DEPARTMENT OF THE INTERIOR
U.S. GEOLOGICAL SURVEY

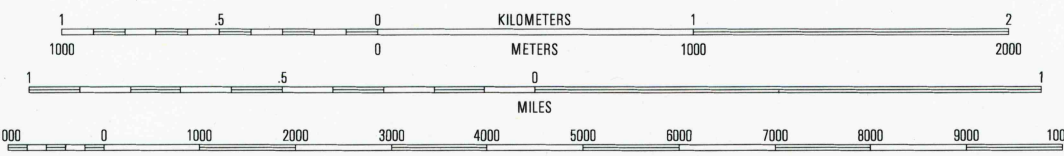
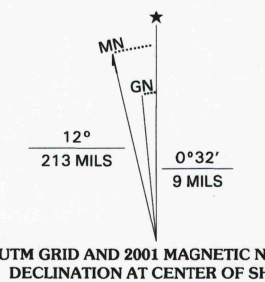


COMMONWEALTH OF PENNSYLVANIA
DEPARTMENT OF CONSERVATION AND NATURAL RESOURCES
BUREAU OF TOPOGRAPHIC AND GEOLOGIC SURVEY

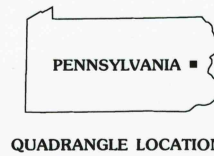
NEW TRIPOLI QUADRANGLE
PENNSYLVANIA
7.5-MINUTE SERIES (TOPOGRAPHIC)



Produced by the United States Geological Survey
in cooperation with Pennsylvania Department of Conservation
and Natural Resources, Bureau of Topographic and Geologic Survey
Topography compiled 1999. Planimetry derived from imagery
taken 1999 and other sources. Survey control current as of 1956
Boundaries current as of 2001
North American Datum of 1983 (NAD 83). Projection and
1 000-meter grid: Universal Transverse Mercator, zone 18
2 500-meter ticks: Pennsylvania Coordinate System of 1983
(south and north zones)
North American Datum of 1927 (NAD 27) is shown by dashed
corner ticks. The values of the shift between NAD 83 and NAD 27
for 7.5-minute intersections are obtainable from National Geodetic
Survey NADCON software
There may be private inholdings within the boundaries of
the National or State reservations shown on this map
Houses of worship, schools, and other labeled buildings verified 1956



CONTOUR INTERVAL 20 FEET
NATIONAL GEODETIC VERTICAL DATUM OF 1929
(TO CONVERT ELEVATIONS TO THE NORTH AMERICAN VERTICAL DATUM OF 1988, SUBTRACT 1 FOOT)
TO CONVERT FROM FEET TO METERS, MULTIPLY BY 0.3048



1	2	3
4	5	6
7	8	

1 Tamaqua
2 Nesquehoning
3 Lehigh
4 New Ringold
5 Stateville
6 Hamburg
7 Kutztown
8 Tipton

ROAD CLASSIFICATION
Primary highway
hard surface
Secondary highway
hard surface
Light-duty road, hard or
improved surface
Unimproved road
Interstate Route
U.S. Route
State Route

NEW TRIPOLI, PA
1999

NIMA 5865 III NE-SERIES V831

RECEIVED
JUL 31 2001

U.S. GEOLOGICAL SURVEY
HISTORICAL MAP ARCHIVES

