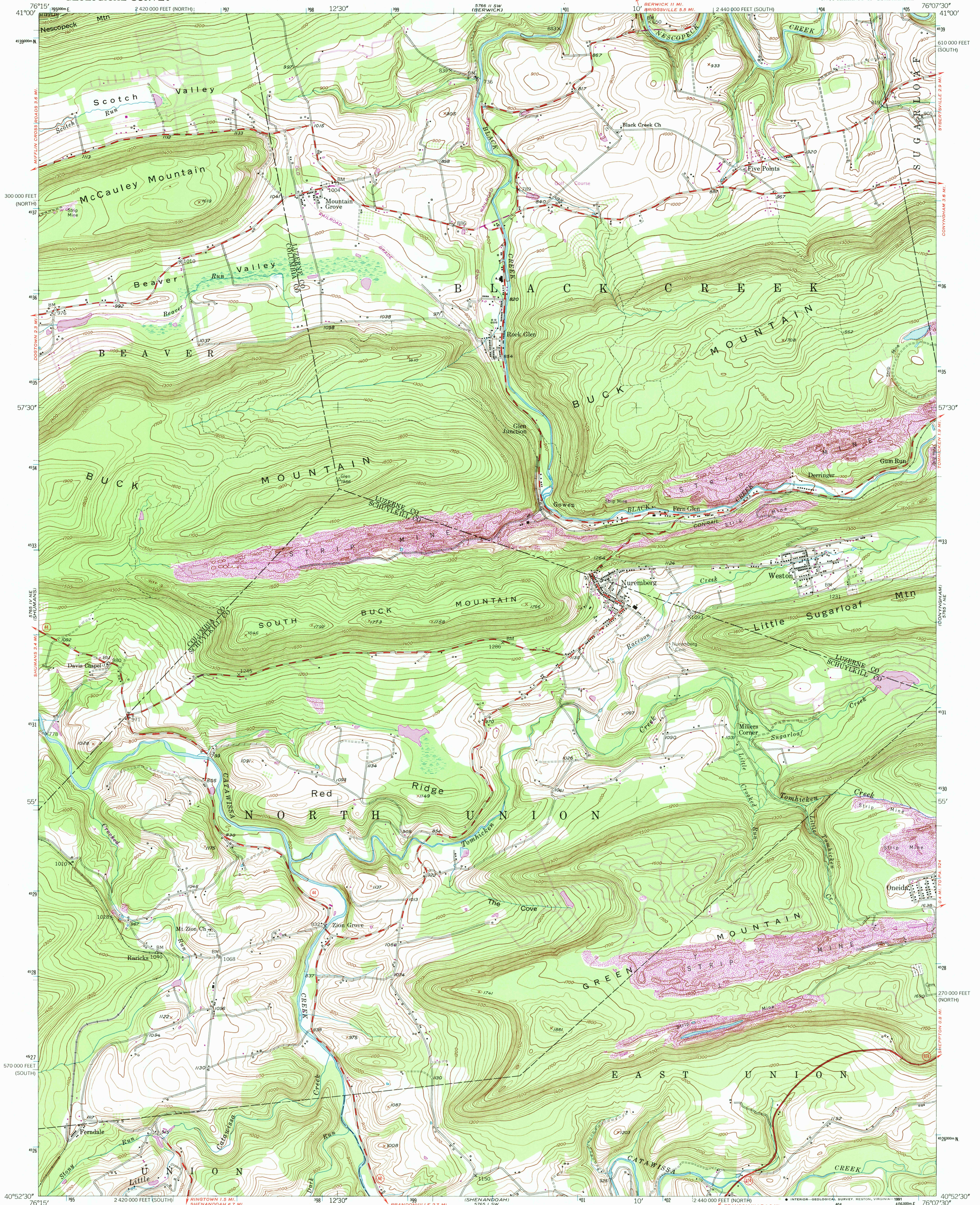


UNITED STATES
DEPARTMENT OF THE INTERIOR
GEOLOGICAL SURVEY

NUREMBERG QUADRANGLE
PENNSYLVANIA
7.5 MINUTE SERIES (TOPOGRAPHIC)
NW/4 MAHANAY 15' QUADRANGLE



Mapped, edited, and published by the Geological Survey

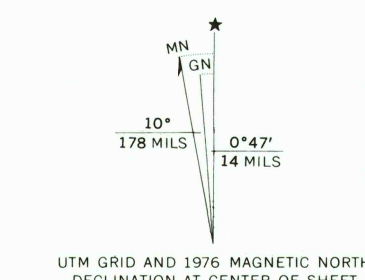
Control by USGS and USC&GS

Topography from aerial photographs by multiplex methods
Aerial photographs taken 1942. Field check 1946
Culture revised 1955

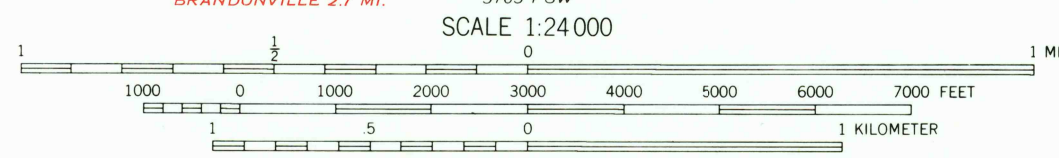
Polyconic projection. 1927 North American datum
10,000-foot grids based on Pennsylvania coordinate system,
north and south zones

Contours in strip mine areas from 1942 photography
1000-meter Universal Transverse Mercator grid ticks,
zone 18, shown in blue

Revisions shown in purple compiled in cooperation with
State of Pennsylvania agencies, from aerial photographs
taken 1969 and 1976. This information not field checked



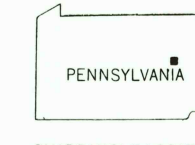
Map photoinspected 1984
No major culture or drainage changes observed



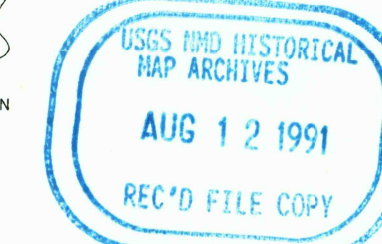
CONTOUR INTERVAL 20 FEET
NATIONAL GEODETIC VERTICAL DATUM OF 1929

THIS MAP COMPLIES WITH NATIONAL MAP ACCURACY STANDARDS
FOR SALE BY U. S. GEOLOGICAL SURVEY
DENVER, COLORADO 80225, OR RESTON, VIRGINIA 22092

A FOLDER DESCRIBING TOPOGRAPHIC MAPS AND SYMBOLS IS AVAILABLE ON REQUEST



QUADRANGLE LOCATION



ROAD CLASSIFICATION
Heavy-duty ——— Light-duty ———
Medium-duty ——— Unimproved dirt ———
U. S. Route ——— State Route ———

NUREMBERG, PA.
NW/4 MAHANAY 15' QUADRANGLE
N4052.5-W7607.5/7.5
PHOTOINSPECTED 1984
1955

PHOTOREVISED 1969 AND 1976
AMS 5765 1 NW-SERIES V831