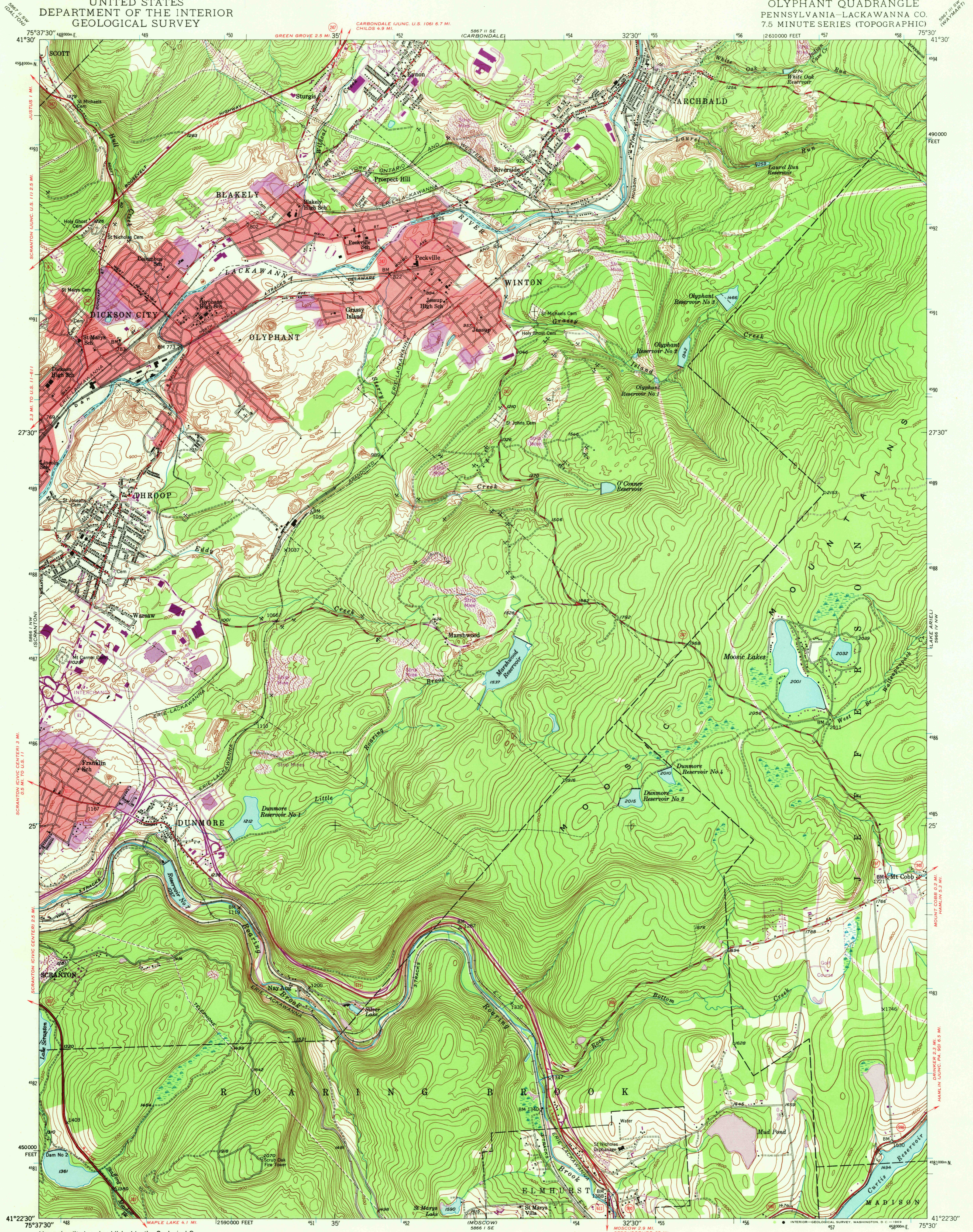


UNITED STATES
DEPARTMENT OF THE INTERIOR
GEOLOGICAL SURVEY

OLYPHANT QUADRANGLE
PENNSYLVANIA-LACKAWANNA CO.
7.5 MINUTE SERIES (TOPOGRAPHIC)



Mapped, edited, and published by the Geological Survey
Control by USGS and USC&GS

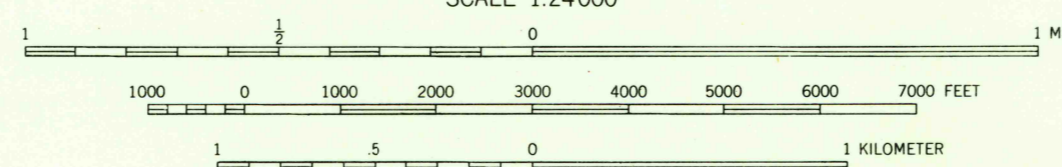
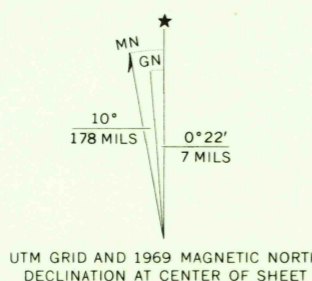
Topography from aerial photographs by multiplex methods
Aerial photographs taken 1942. Field check, 1946

Polyconic projection. 1927 North American datum
10 000-foot grid based on Pennsylvania coordinate system,
north zone
1000-meter Universal Transverse Mercator grid ticks,
zone 18, shown in blue

Red tint indicates areas in which only
landmark buildings are shown

Revisions shown in purple compiled in cooperation with
State of Pennsylvania agencies, from aerial photographs taken 1969
This information not field checked

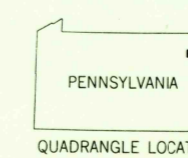
Purple tint indicate extension of urban areas



CONTOUR INTERVAL 20 FEET
DATUM IS MEAN SEA LEVEL

THIS MAP COMPLIES WITH NATIONAL MAP ACCURACY STANDARDS
FOR SALE BY U. S. GEOLOGICAL SURVEY, WASHINGTON, D. C. 20242
A FOLDER DESCRIBING TOPOGRAPHIC MAPS AND SYMBOLS IS AVAILABLE ON REQUEST

USGS
Historical File
Topographic Division



U.S.G.S.
FILE COPY
TOPOGRAPHIC DIVISION

OLYPHANT, PA.
N4122.5-W7530.7.5

1946
PHOTOREVISED 1969
AMS 5866 I NE-SERIES V831

2245
NOV 5 1969