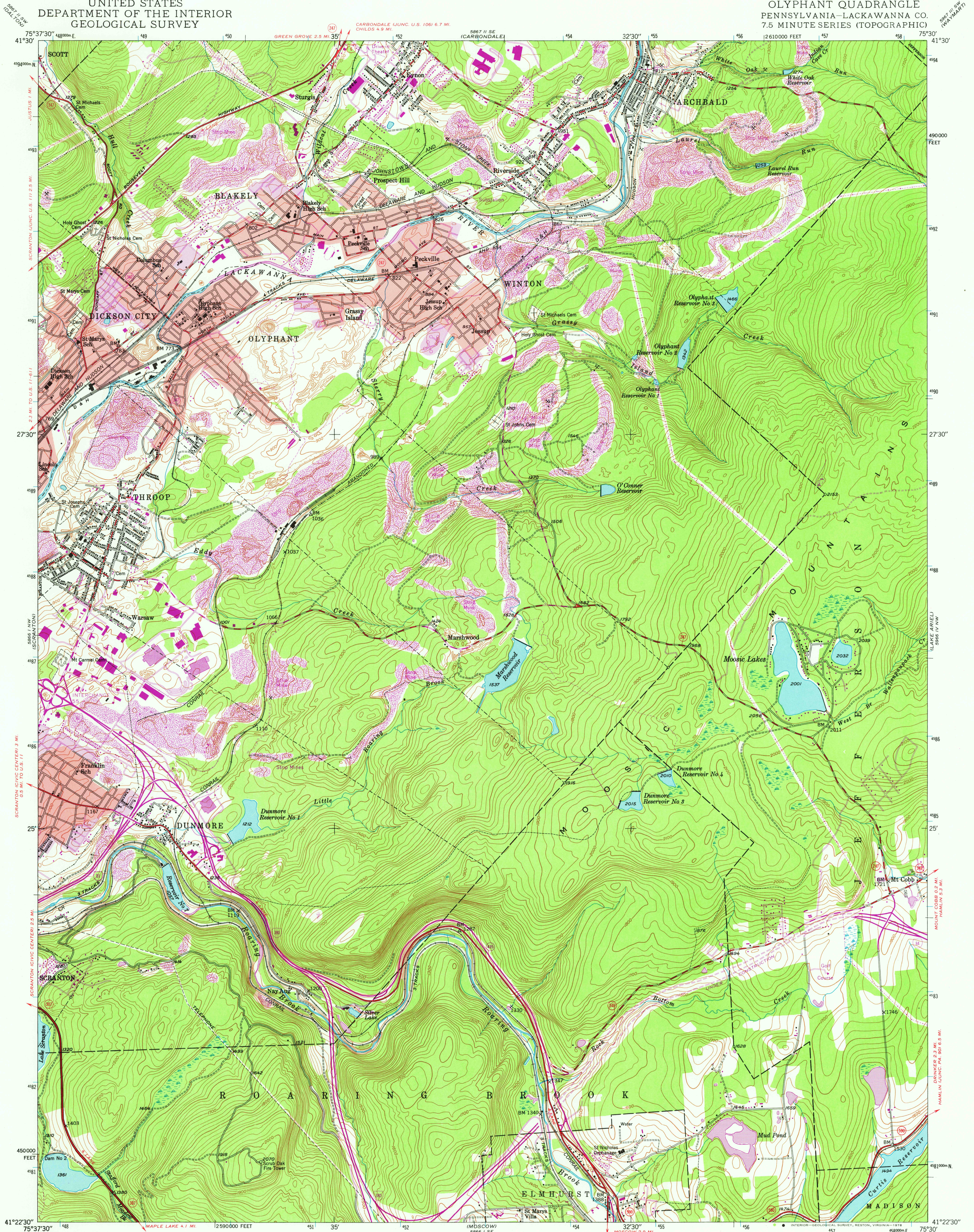
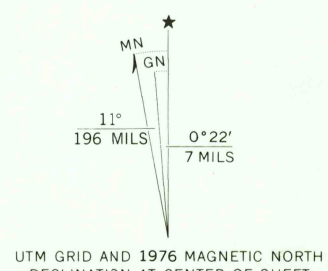


UNITED STATES  
DEPARTMENT OF THE INTERIOR  
GEOLOGICAL SURVEY

OLYPHANT QUADRANGLE  
PENNSYLVANIA—LACKAWANNA CO.  
7.5 MINUTE SERIES (TOPOGRAPHIC)

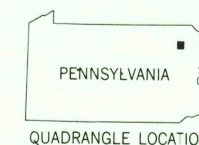


Mapped, edited, and published by the Geological Survey  
Control by USGS and USC&GS  
Topography from aerial photographs by multiplex methods  
Aerial photographs taken 1942. Field check, 1946  
Polyconic projection. 1927 North American datum  
10 000-foot grid based on Pennsylvania coordinate system,  
north zone  
1000-meter Universal Transverse Mercator grid ticks,  
zone 18, shown in blue  
Red tint indicates areas in which only  
landmark buildings are shown  
Revisions shown in purple compiled in cooperation with  
State of Pennsylvania agencies, from aerial photographs  
taken 1969 and 1976. This information not field checked  
Purple tint indicates extension of urban areas



SCALE 1:24000  
1000 0 1000 2000 3000 4000 5000 6000 7000 FEET  
1 5 0 1 KILOMETER  
CONTOUR INTERVAL 20 FEET  
NATIONAL GEODETIC VERTICAL DATUM OF 1929

THIS MAP COMPLIES WITH NATIONAL MAP ACCURACY STANDARDS  
FOR SALE BY U.S. GEOLOGICAL SURVEY, RESTON, VIRGINIA 22092  
A FOLDER DESCRIBING TOPOGRAPHIC MAPS AND SYMBOLS IS AVAILABLE ON REQUEST



ROAD CLASSIFICATION  
Heavy-duty ——— Light-duty ———  
Medium-duty ——— Unimproved dirt ———  
Interstate Route U.S. Route State Route

USGS  
Historical File  
Topographic Division

OLYPHANT, PA.  
N4122.5-W7530/7.5  
1946  
PHOTOREVISED 1969 AND 1976  
AMS 5866 I NE-SERIES V831

APR 06 1978

6650