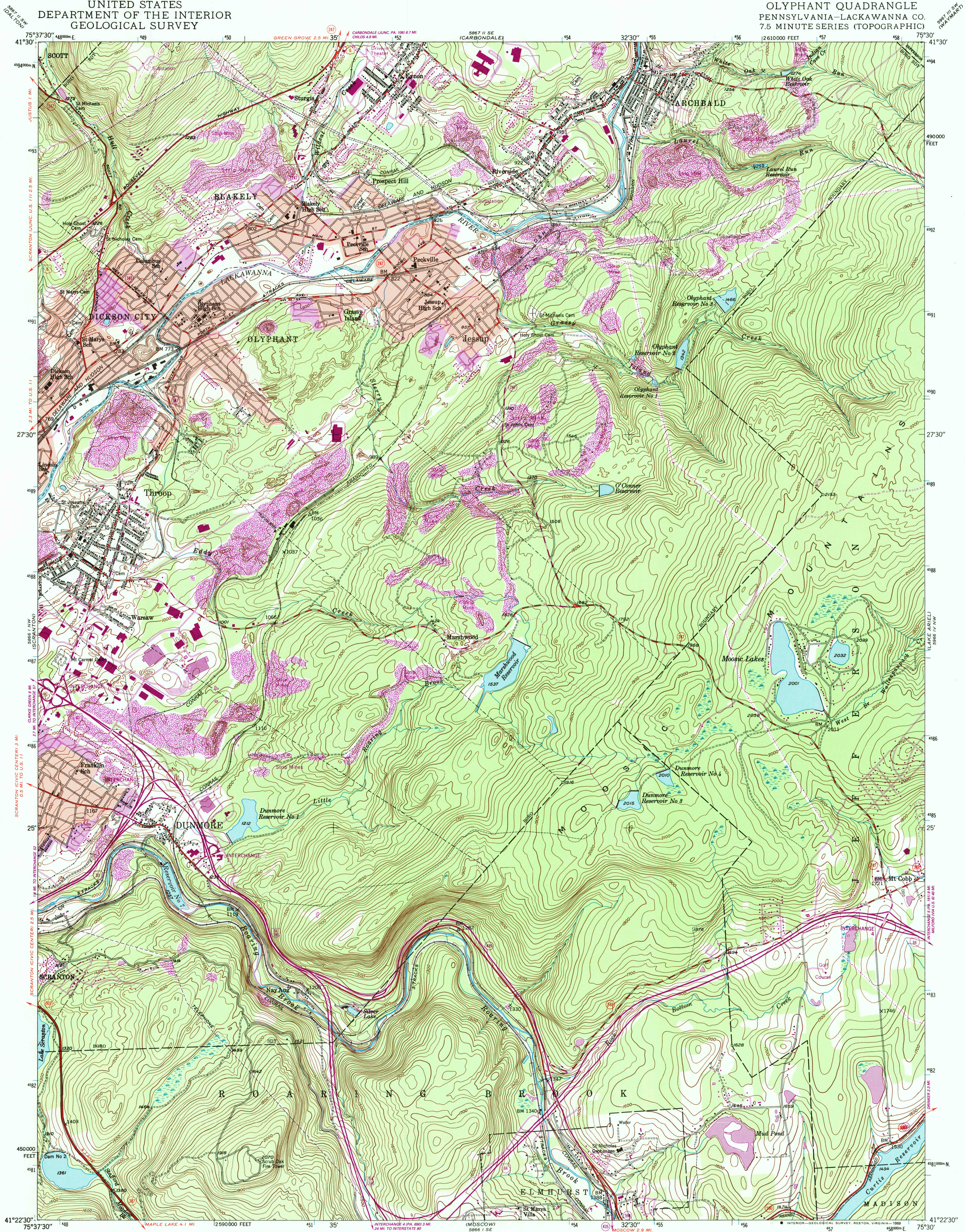


UNITED STATES
DEPARTMENT OF THE INTERIOR
GEOLOGICAL SURVEY

OLYPHANT QUADRANGLE
PENNSYLVANIA-LACKAWANNA CO.
7.5 MINUTE SERIES (TOPOGRAPHIC)



Mapped, edited, and published by the Geological Survey
Control by USGS and NOS/NOAA

Topography by photogrammetric methods from aerial photographs
taken 1942. Field checked 1946

Polyconic projection. 10,000-foot grid ticks based on Pennsylvania
coordinate system, north zone

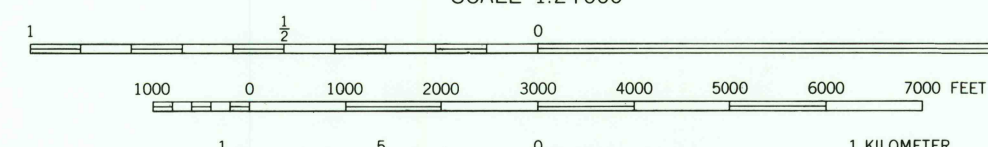
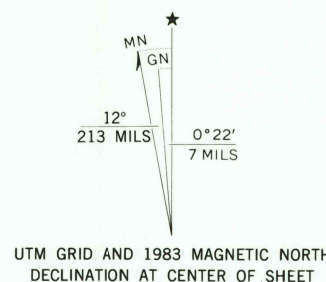
1000-meter Universal Transverse Mercator grid ticks, zone 18,
shown in blue

1927 North American Datum
To place on the predicted North American Datum 1983
move the projection lines 5 meters south and
30 meters west as shown by dashed corner ticks

Red tint indicates areas in which only landmark buildings are shown

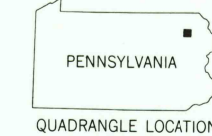
Revisions shown in purple and woodland compiled in cooperation with
Commonwealth of Pennsylvania agencies from aerial photographs taken
1981 and other sources. This information not field checked. Map
edited 1983

Purple tint indicates extension of urban areas



CONTOUR INTERVAL 20 FEET
NATIONAL GEODETIC VERTICAL DATUM OF 1929

THIS MAP COMPLIES WITH NATIONAL MAP ACCURACY STANDARDS
FOR SALE BY U. S. GEOLOGICAL SURVEY, DENVER, COLORADO 80225
OR RESTON, VIRGINIA 22092
A FOLDER DESCRIBING TOPOGRAPHIC MAPS AND SYMBOLS IS AVAILABLE ON REQUEST



ROAD CLASSIFICATION
Heavy-duty ——— Light-duty ———
Medium-duty ——— Unimproved dirt ———
Interstate Route ——— U. S. Route ——— State Route ———

OLYPHANT, PA.
41075-D5-TF-024

1946
PHOTOREVISED 1983
DMA 5866 I NE-SERIES V831

USGS NMD HISTORICAL MAP
AUG 14 1989
REC'D FILE COPY