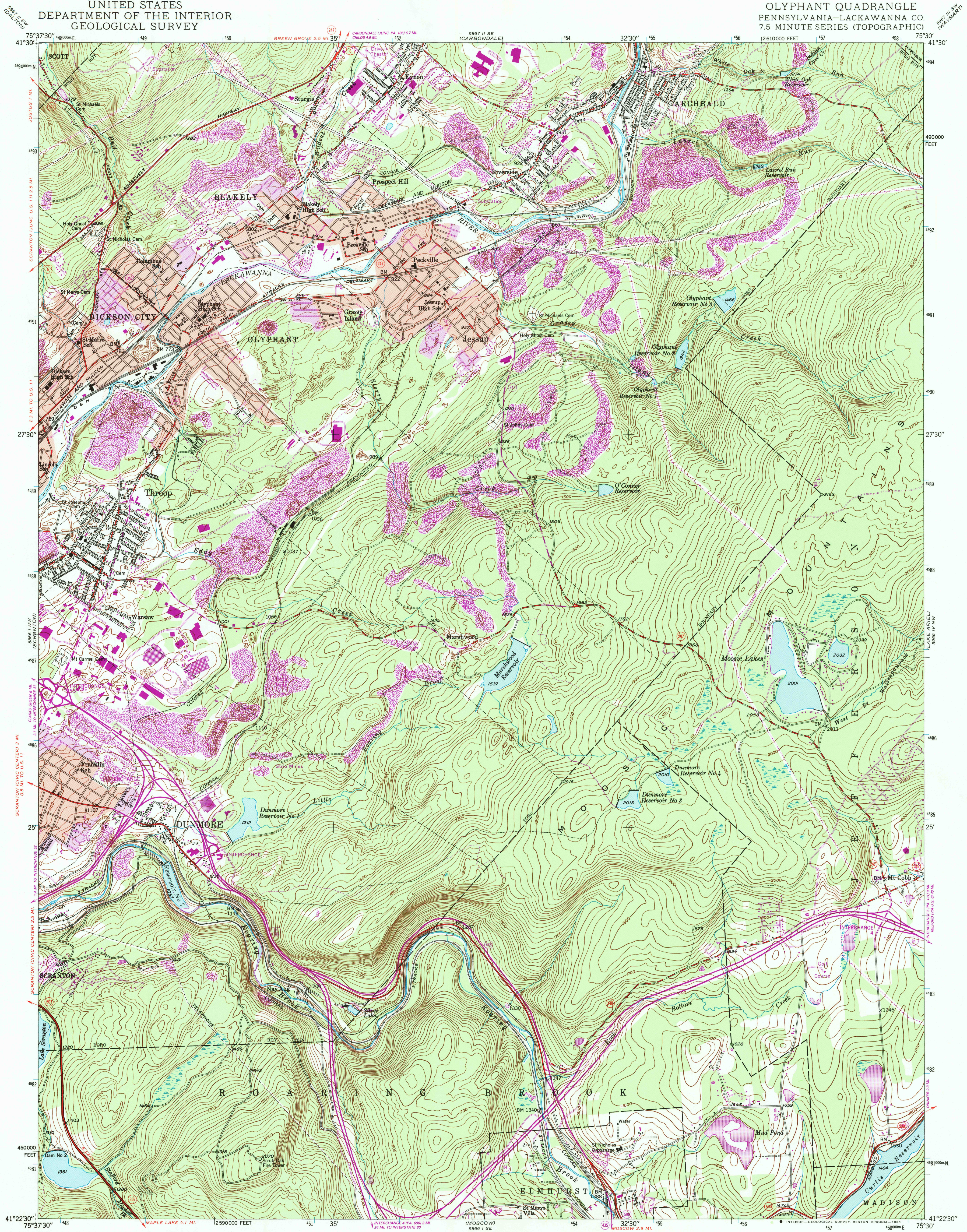
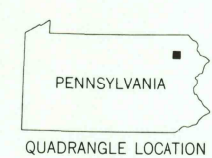
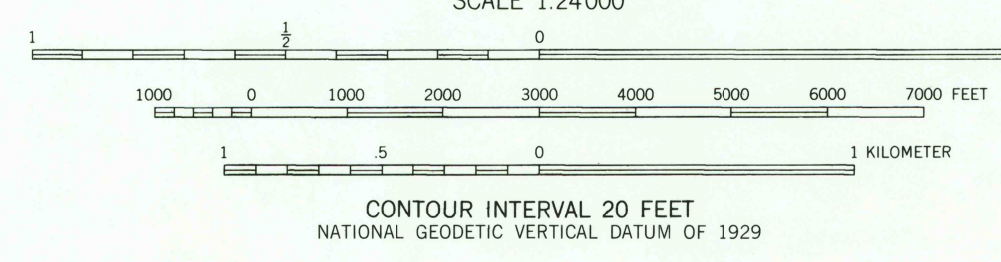
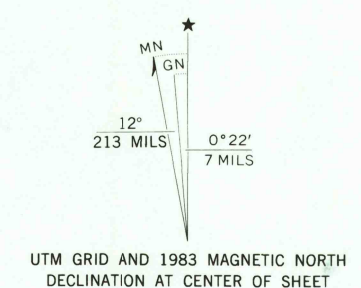


UNITED STATES
DEPARTMENT OF THE INTERIOR
GEOLOGICAL SURVEY

OLYPHANT QUADRANGLE
PENNSYLVANIA—LACKAWANNA CO.
7.5 MINUTE SERIES (TOPOGRAPHIC)



Maped, edited, and published by the Geological Survey
Control by USGS and NOS/NOAA
Topography by photogrammetric methods from aerial photographs
taken 1942. Field checked 1946
Polyconic projection. 10,000-foot grid ticks based on Pennsylvania
coordinate system, north zone
1000-meter Universal Transverse Mercator grid ticks, zone 18,
shown in blue
1927 North American Datum
To place on the predicted North American Datum 1983
move the projection lines 5 meters south and
30 meters west as shown by dashed corner ticks
Red tint indicates areas in which only landmark buildings are shown
Revisions shown in purple and woodland compiled in cooperation with
Commonwealth of Pennsylvania agencies from aerial photographs taken
1981 and other sources. This information not field checked. Map
edited 1983
Purple tint indicates extension of urban areas



ROAD CLASSIFICATION

Heavy-duty	Light-duty
Medium-duty	Unimproved dirt
Interstate Route	U. S. Route
	State Route

OLYPHANT, PA.
41075-D5-TF-024
1946
PHOTOREVISED 1983
DMA 5866 1 NE-SERIES V831

RETURN TO:
USGS AND HISTORICAL MAP ARCHIVES