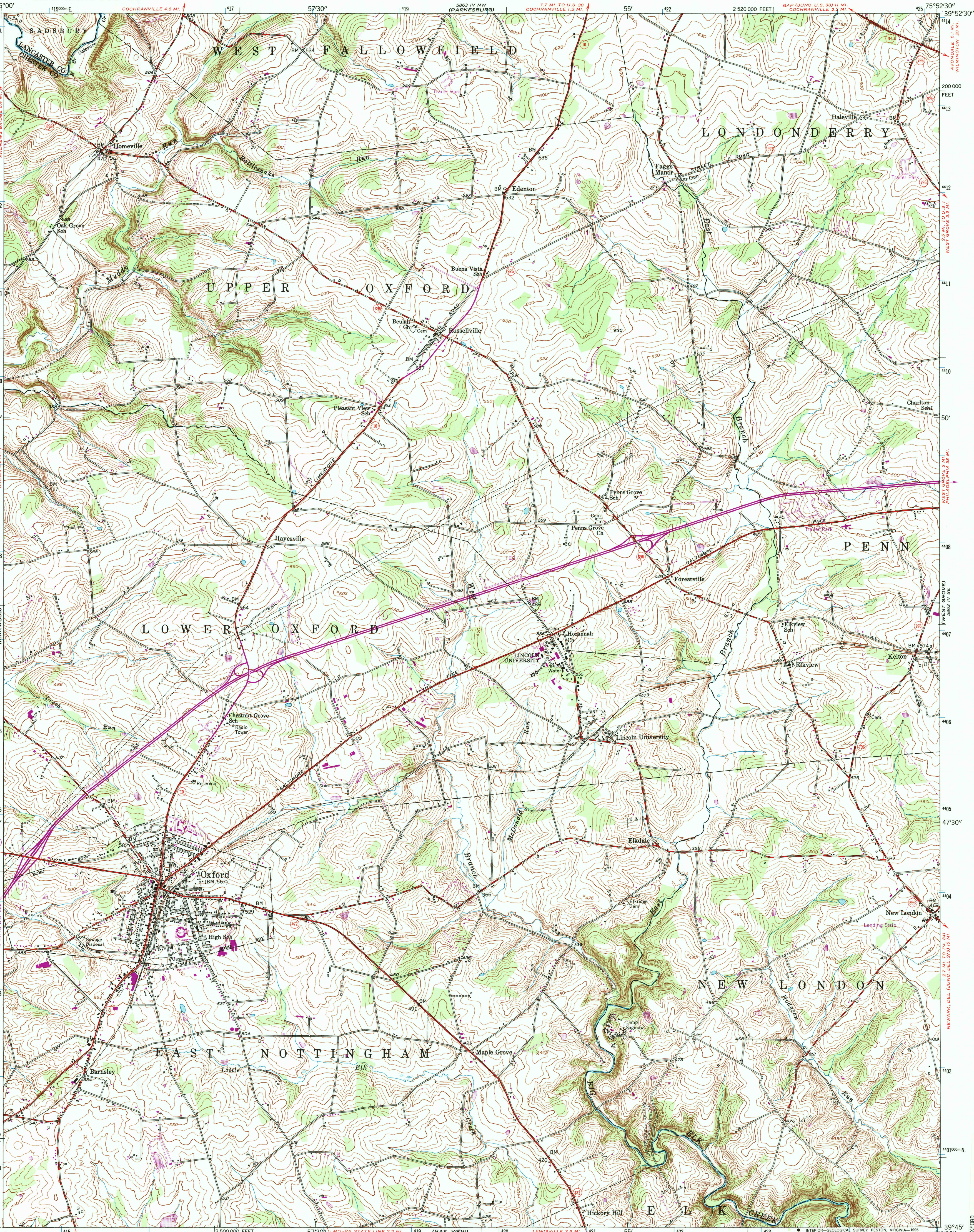




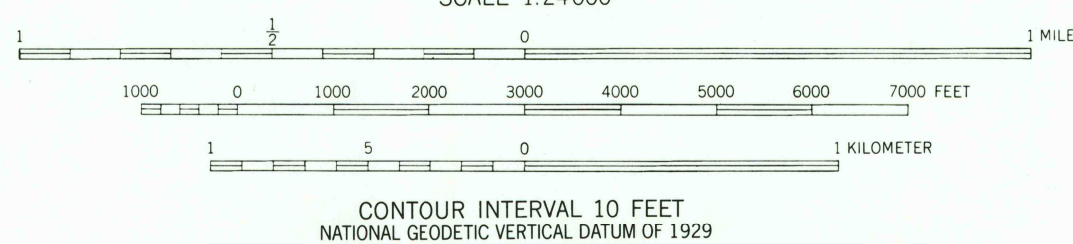
UNITED STATES  
DEPARTMENT OF THE INTERIOR  
GEOLOGICAL SURVEY

OXFORD QUADRANGLE  
PENNSYLVANIA  
7.5 MINUTE SERIES (TOPOGRAPHIC)

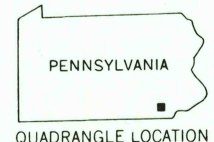


Produced by the U. S. Geological Survey  
Control by USGS and NOS/NOAA  
Compiled from imagery dated 1950. Photosinspected using  
imagery dated 1992, no major culture or drainage changes  
observed. PLSS and survey control current as of 1953  
Boundaries verified and names revised 1994  
North American Datum of 1927 (NAD 27). Projection and  
10 000-foot ticks: Pennsylvania coordinate system, south zone  
(Lambert conformal conic)  
Blue 1000-meter Universal Transverse Mercator grid ticks, zone 18  
North American Datum of 1983 (NAD 83) is shown by dashed  
corner ticks. The values of the shift between NAD 27 and NAD 83  
for 7.5-minute intersections are obtainable from National Geodetic  
Survey NADCON software

Revisions shown in purple on the Geological Survey  
in cooperation with State of Pennsylvania agencies from aerial  
photographs taken 1968 and 1973. This information not field checked



THIS MAP COMPLIES WITH NATIONAL MAP ACCURACY STANDARDS  
FOR SALE BY U.S. GEOLOGICAL SURVEY  
DENVER, COLORADO 80225, OR RESTON, VIRGINIA 22092  
A FOLDER DESCRIBING TOPOGRAPHIC MAPS AND SYMBOLS IS AVAILABLE ON REQUEST



ROAD CLASSIFICATION  
Primary highway, hard surface  
Secondary highway, hard surface  
Interstate Route  
U. S. Route  
State Route  
Light-duty road, hard or improved surface  
Unimproved road

OXFORD, PA.  
39075-G8-TF-024  
1992  
DMA 5863 IV SW-SERIES V831

