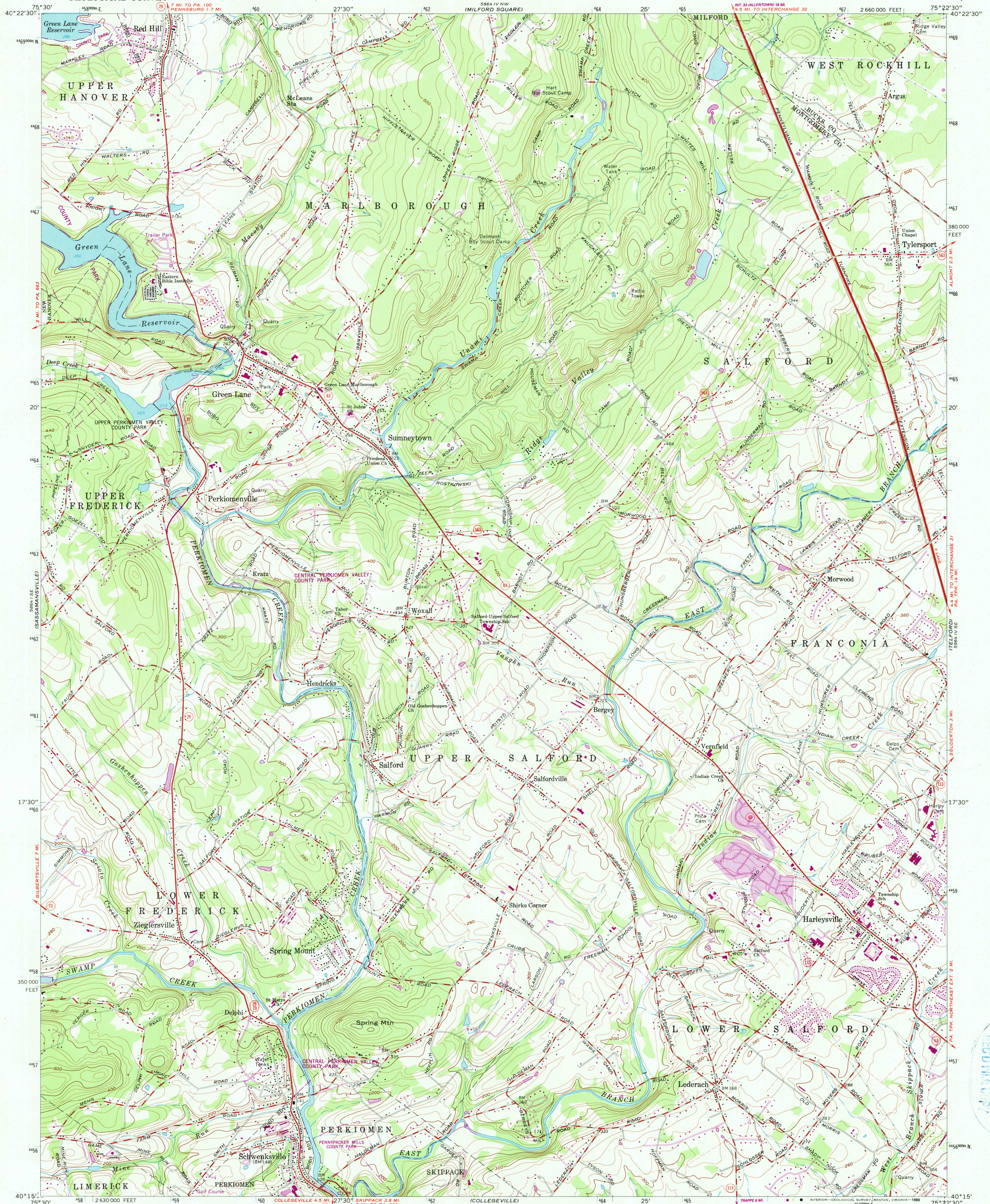


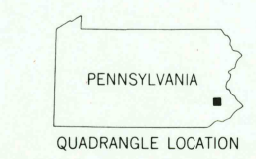
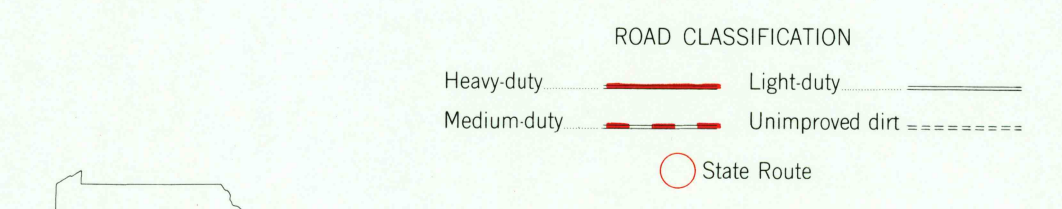
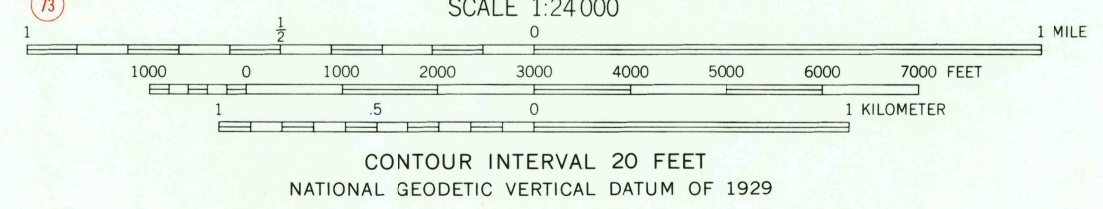
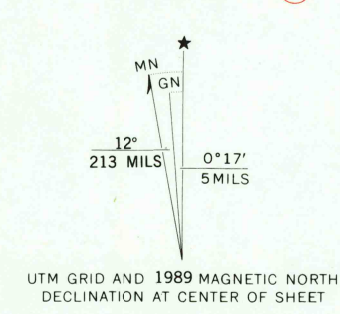
UNITED STATES
DEPARTMENT OF THE INTERIOR
GEOLOGICAL SURVEY

PERKIOMENVILLE QUADRANGLE
PENNSYLVANIA
7.5 MINUTE SERIES (TOPOGRAPHIC)



SEP 19 1990
RECORDS
U.S. GEOLOGICAL SURVEY

Mapped by the Army Map Service
Edited and published by the Geological Survey
Control by USGS and USC&GS
Topography by photogrammetric methods from aerial photographs taken 1942. Planimetry revised by the Geological Survey 1960
Polyconic projection. 1927 North American datum
10,000-foot grid based on Pennsylvania coordinate system, south zone
1000-meter Universal Transverse Mercator grid ticks, zone 18, shown in blue
To place on the predicted North American Datum 1983 move the projection lines 6 meters south and 31 meters west as shown by dashed corner ticks
Fine red dashed lines indicate selected fence and field lines where generally visible on aerial photographs. This information is unchecked



THIS MAP COMPLIES WITH NATIONAL MAP ACCURACY STANDARDS
FOR SALE BY U.S. GEOLOGICAL SURVEY
DENVER, COLORADO 80225 OR RESTON, VIRGINIA 22092
A FOLDER DESCRIBING TOPOGRAPHIC MAPS AND SYMBOLS IS AVAILABLE ON REQUEST

Revisions shown in purple and woodland compiled in cooperation with Commonwealth of Pennsylvania agencies from aerial photographs taken 1987 and other sources. This information not field checked
Map edited 1989
Purple tint indicates extension of urban areas

PERKIOMENVILLE, PA.
40075-C4-TF-024
1960
PHOTOREVISED 1989
DMA 5964 IV SW-SERIES V831