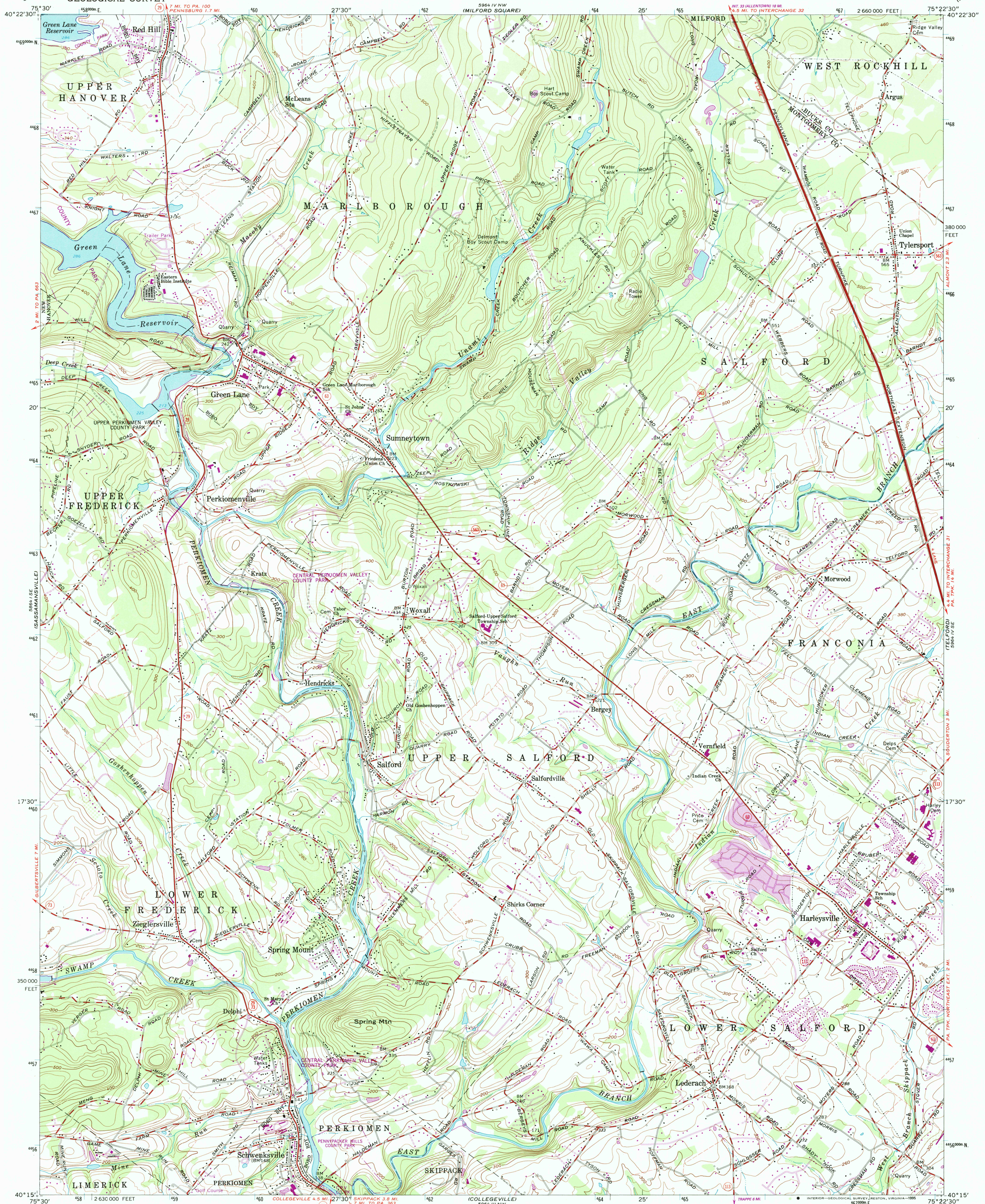


UNITED STATES  
DEPARTMENT OF THE INTERIOR  
GEOLOGICAL SURVEY

PERKIOMENVILLE QUADRANGLE  
PENNSYLVANIA  
7.5 MINUTE SERIES (TOPOGRAPHIC)

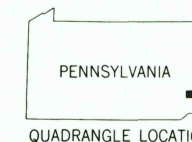


Mapped by the Army Map Service  
Edited and published by the U.S. Geological Survey  
Control by USGS and NOS/NOAA  
Compiled from imagery dated 1942. Revised from imagery dated 1960. Photorevised using imagery dated 1992, no major culture or drainage changes observed.  
Boundaries revised and names verified 1994  
North American Datum of 1927 (NAD 27). Projection and 10 000-foot ticks: Pennsylvania coordinate system, south zone (Lambert conformal conic)  
Blue 1 000-meter Universal Transverse Mercator grid ticks, zone 18  
North American Datum of 1983 (NAD 83) is shown by dashed corner ticks. The values of the shift between NAD 27 and NAD 83 for 7.5-minute intersections are obtainable from National Geodetic Survey NADCON software  
Fine red dashed lines indicate selected fence and field lines where generally visible on aerial photographs. This information is unchecked

UTM GRID AND 1994 MAGNETIC NORTH  
DECLINATION AT CENTER OF SHEET

SCALE 1:24 000  
CONTOUR INTERVAL 20 FEET  
NATIONAL GEODETIC VERTICAL DATUM OF 1929

RETURN TO:  
USGS AND HISTORICAL MAP ARCHIVES



ROAD CLASSIFICATION  
Primary highway, hard surface  
Secondary highway, hard surface  
Interstate Route  
Light-duty road, hard or improved surface  
Unimproved road  
U. S. Route  
State Route

PERKIOMENVILLE, PA.  
40075-C4-TF-024

1992

DMA 5964 IV SW-SERIES V831

THIS MAP COMPLIES WITH NATIONAL MAP ACCURACY STANDARDS  
FOR SALE BY U. S. GEOLOGICAL SURVEY  
DENVER, COLORADO 80225 OR RESTON, VIRGINIA 22092  
A FOLDER DESCRIBING TOPOGRAPHIC MAPS AND SYMBOLS IS AVAILABLE ON REQUEST

Revisions shown in purple and woodland compiled in cooperation with Commonwealth of Pennsylvania agencies from aerial photographs taken 1987. This information not field checked  
Map edited 1989  
Purple tint indicates extension of urban areas