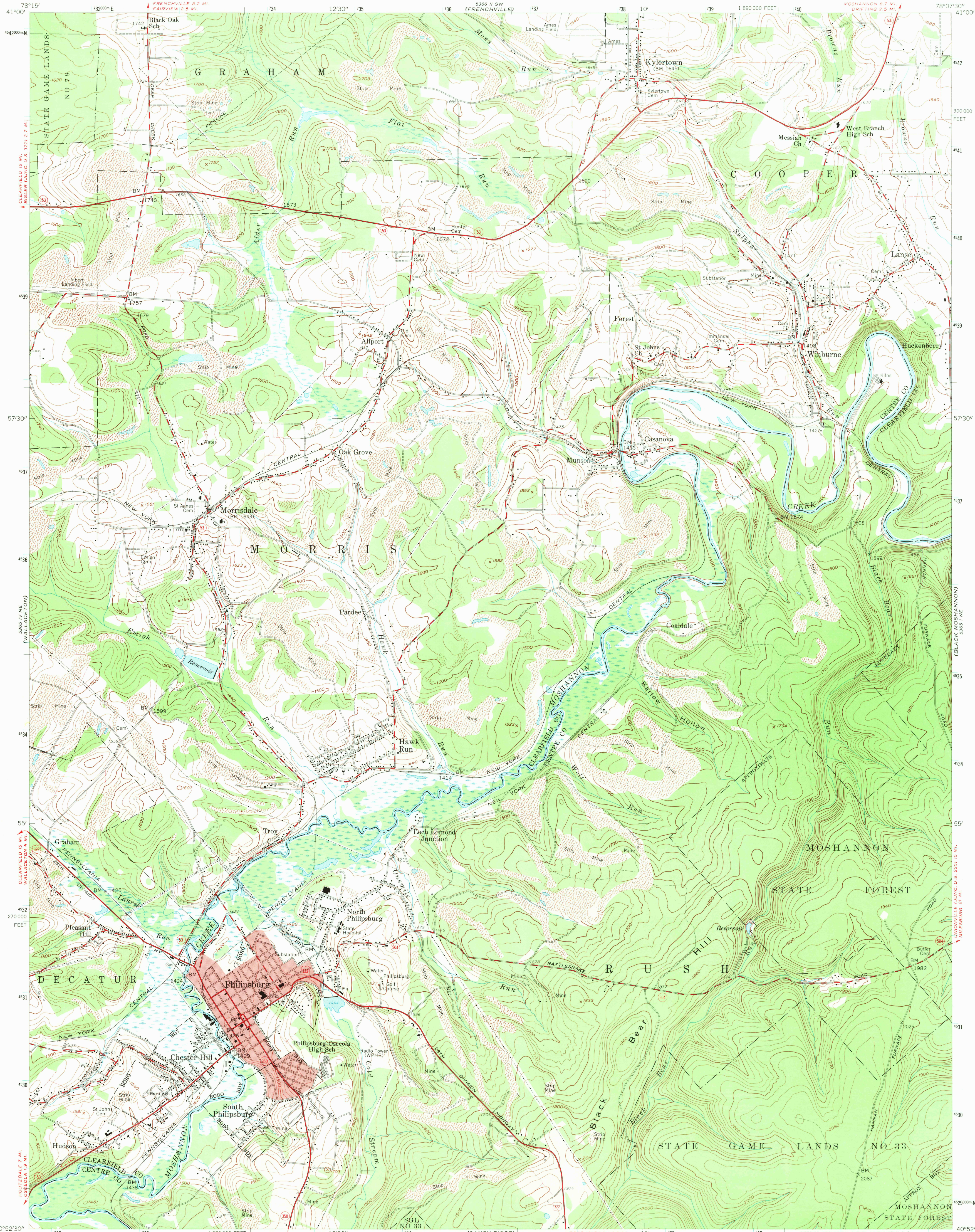
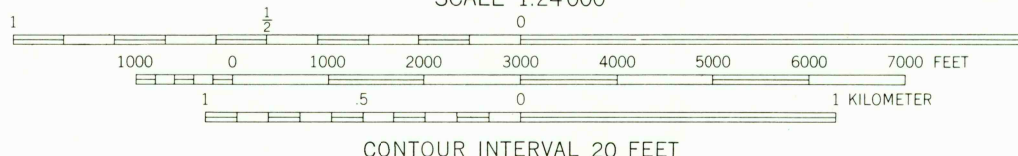
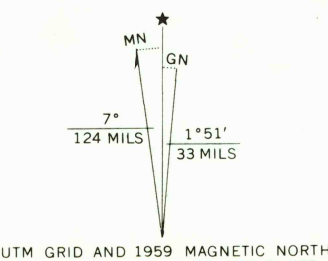


UNITED STATES  
DEPARTMENT OF THE INTERIOR  
GEOLOGICAL SURVEY

PHILIPSBURG QUADRANGLE  
PENNSYLVANIA  
7.5 MINUTE SERIES (TOPOGRAPHIC)  
NW 4 PHILIPSBURG 15' QUADRANGLE

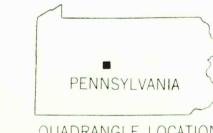


Mapped, edited, and published by the Geological Survey  
Control by USGS and USC&GS  
Topography from aerial photographs by photogrammetric methods  
Aerial photographs taken 1957. Field check 1959  
Polyconic projection. 1927 North American datum  
10,000-foot grid based on Pennsylvania coordinate system,  
north zone  
1000-meter Universal Transverse Mercator grid ticks,  
zone 17, shown in blue  
Red tint indicates area in which only  
landmark buildings are shown  
Fine red dashed lines indicate selected fence and field lines  
visible on aerial photographs. This information is unchecked  
Unchecked elevations are shown in brown



THIS MAP COMPLIES WITH NATIONAL MAP ACCURACY STANDARDS  
FOR SALE BY U.S. GEOLOGICAL SURVEY, WASHINGTON, D.C. 20242  
A FOLDER DESCRIBING TOPOGRAPHIC MAPS AND SYMBOLS IS AVAILABLE ON REQUEST

ROAD CLASSIFICATION  
Heavy-duty ——— Light-duty ———  
Medium-duty ——— Unimproved dirt ———  
U.S. Route ——— State Route ———



PHILIPSBURG, PA.  
NW 4 PHILIPSBURG 15' QUADRANGLE  
N 4052.5—W 7807.5/7.5

USGS 1959  
HISTORICAL FILE  
TOPOGRAPHIC

SEP 7 1971  
USGS  
HISTORICAL FILE  
TOPOGRAPHIC DIVISION