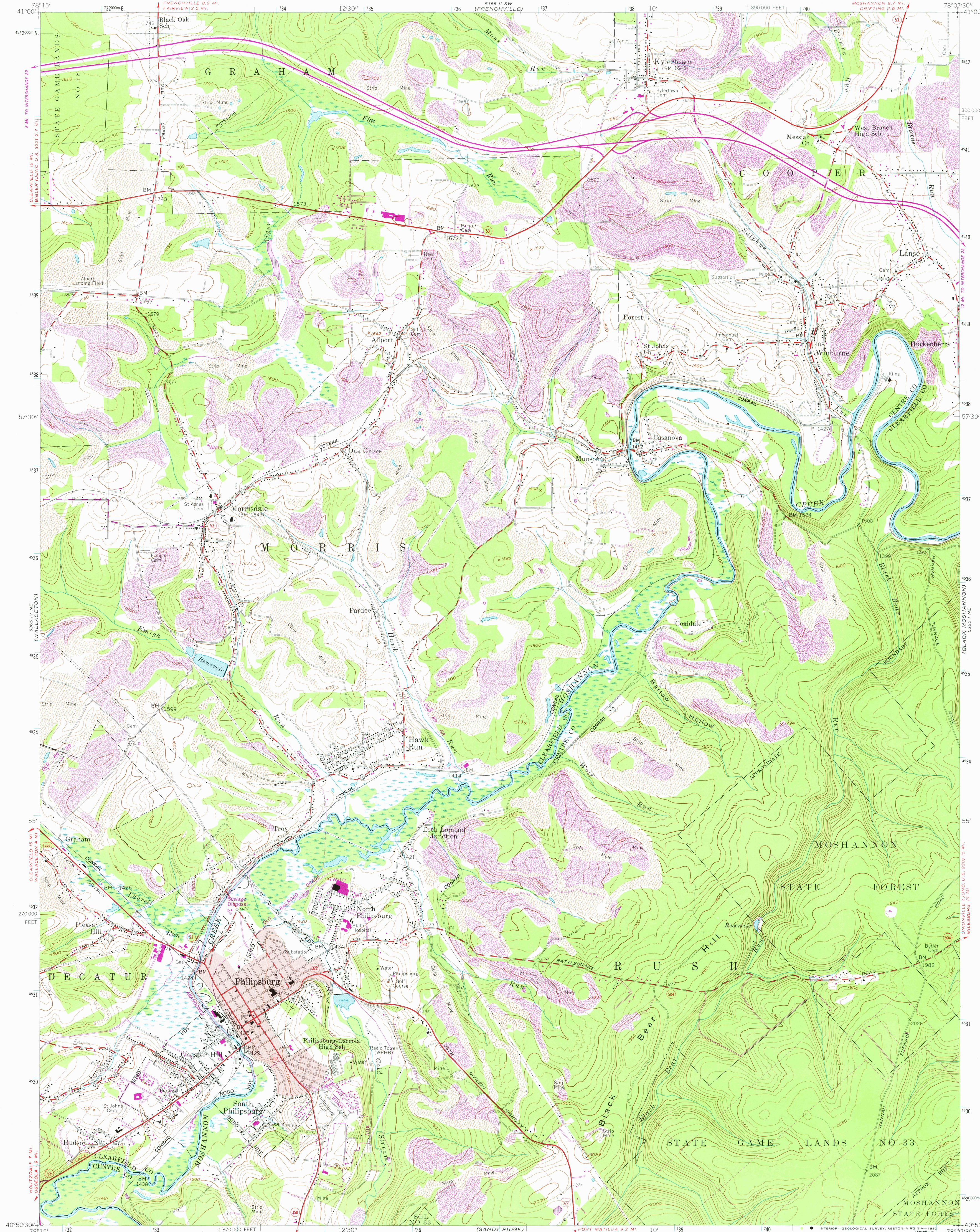


UNITED STATES
DEPARTMENT OF THE INTERIOR
GEOLOGICAL SURVEY

PHILIPSBURG QUADRANGLE
PENNSYLVANIA
7.5 MINUTE SERIES (TOPOGRAPHIC)



Mapped, edited, and published by the Geological Survey
Control by USGS and NOS/NOAA

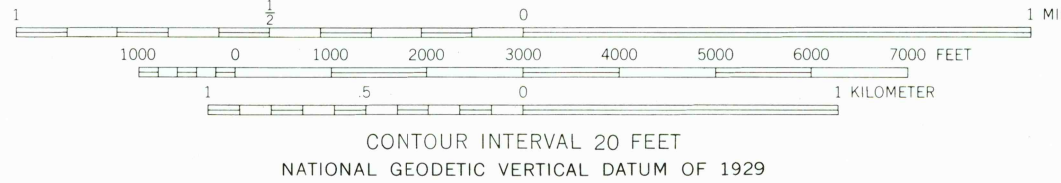
Topography by photogrammetric methods from aerial
photographs taken 1957. Field checked 1959

Polyconic projection. 10,000-foot grid ticks based on
Pennsylvania coordinate system, north zone
1000-meter Universal Transverse Mercator grid ticks,
zone 17, shown in blue. 1927 North American Datum
To place on the predicted North American Datum 1983
move the projection lines 4 meters south and
23 meters west as shown by dashed corner ticks

Fine red dashed lines indicate selected fence and field lines
generally visible on aerial photographs. This information is unchecked

Red tint indicates area in which only landmark buildings are shown

There may be private inholdings within the boundaries of
the National or State reservations shown on this map



THIS MAP COMPLIES WITH NATIONAL MAP ACCURACY STANDARDS
FOR SALE BY U.S. GEOLOGICAL SURVEY, RESTON, VIRGINIA 22092
A FOLDER DESCRIBING TOPOGRAPHIC MAPS AND SYMBOLS IS AVAILABLE ON REQUEST

ROAD CLASSIFICATION
Heavy-duty ——— Light-duty ———
Medium-duty ——— Unimproved dirt ———
U.S. Route ——— State Route ———



PHILIPSBURG, PA.

N 4052.5—W 7807.5/7.5

1959
PHOTOREVISED 1981
DMA 5365 1 NW-SERIES V83 I

Revisions shown in purple compiled in cooperation with
Commonwealth of Pennsylvania agencies from aerial
photographs taken 1977 and other sources. This
information not field checked. Map edited 1981

APR 20 1982

2650