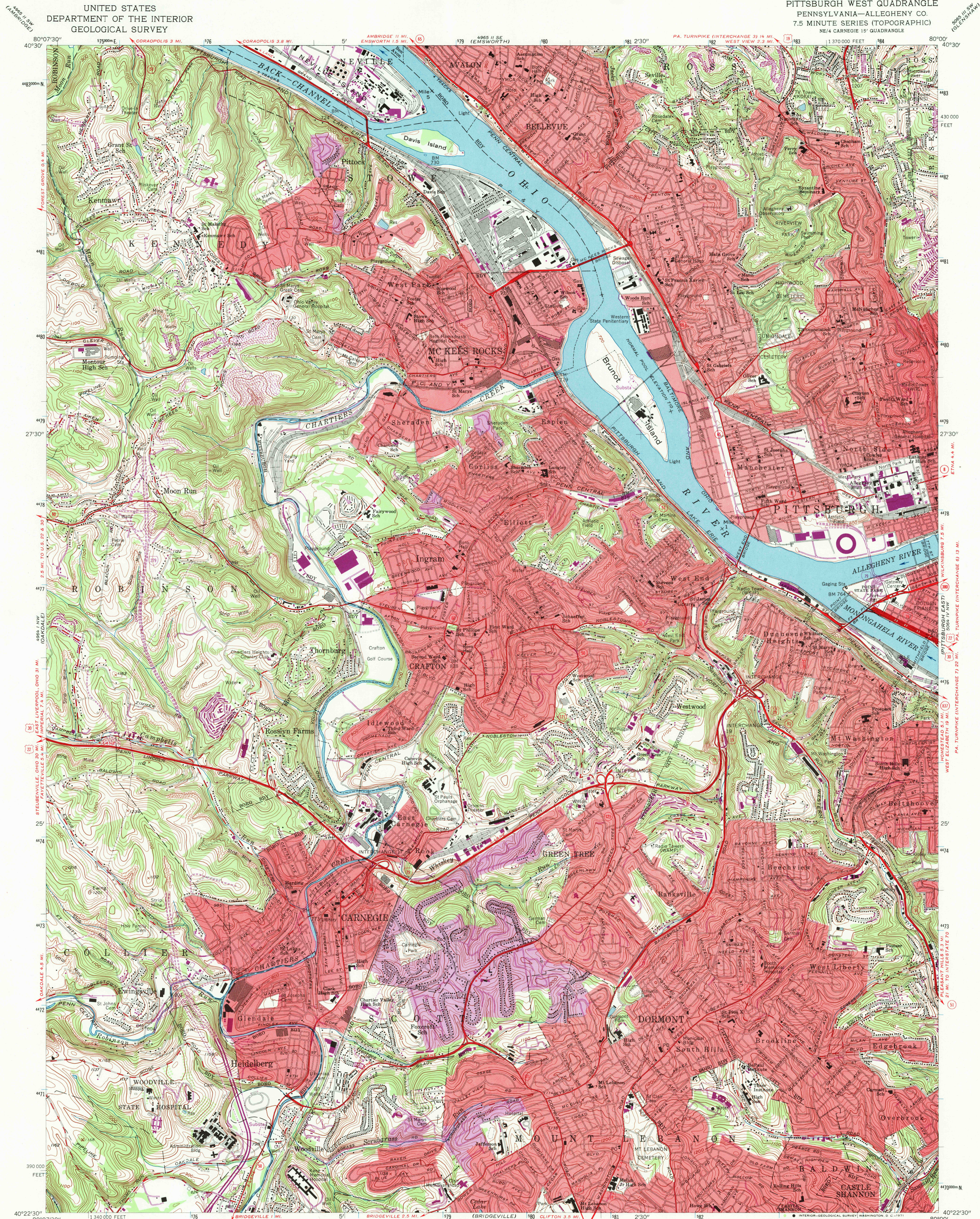
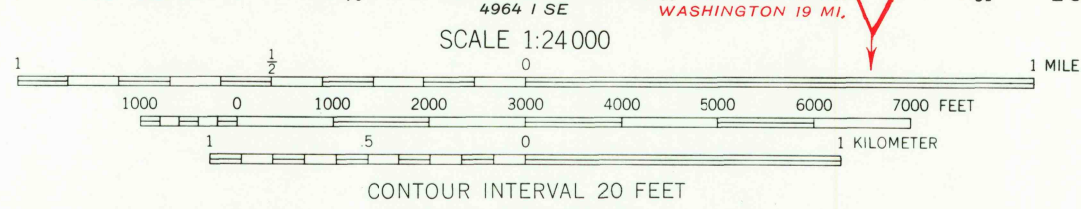
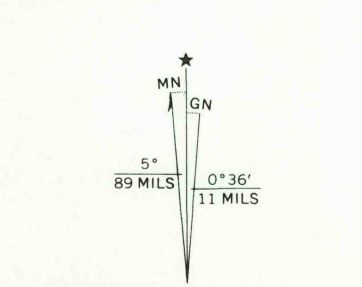


UNITED STATES
DEPARTMENT OF THE INTERIOR
GEOLOGICAL SURVEY

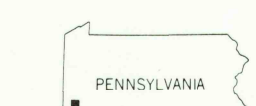
PITTSBURGH WEST QUADRANGLE
PENNSYLVANIA—ALLEGHENY CO.
7.5 MINUTE SERIES (TOPOGRAPHIC)
NE/4 CARNEGIE 15' QUADRANGLE



Mapped, edited, and published by the Geological Survey
Control by USGS, USC&GS, USCE, and the City of Pittsburgh
Topography by planetable surveys 1925-1941, and 1948
Revised 1960
Polyconic projection. 1927 North American datum
10,000-foot grid based on Pennsylvania coordinate system, south zone
1000-meter Universal Transverse Mercator grid ticks,
zone 17, shown in blue
Red tint indicates areas in which only landmark buildings are shown
Revisions shown in purple compiled from aerial
photographs taken 1959. This information not
field checked
Purple tint indicates extension of urban areas



USGS
HISTORICAL FILE
TOPOGRAPHIC DIVISION



ROAD CLASSIFICATION
Heavy duty ——— Light-duty ———
Medium-duty ——— Unimproved dirt ———
Interstate Route U.S. Route State Route

PITTSBURGH WEST, PA.
NE/4 CARNEGIE 15' QUADRANGLE
N4022.5-W8000.17.5

U.S.G.S.
FIVE COPY
TOPOGRAPHIC DIVISION

1960
PHOTOREVISED 1969
AMS 4964 I NE-SERIES V831

MAY 19 1971