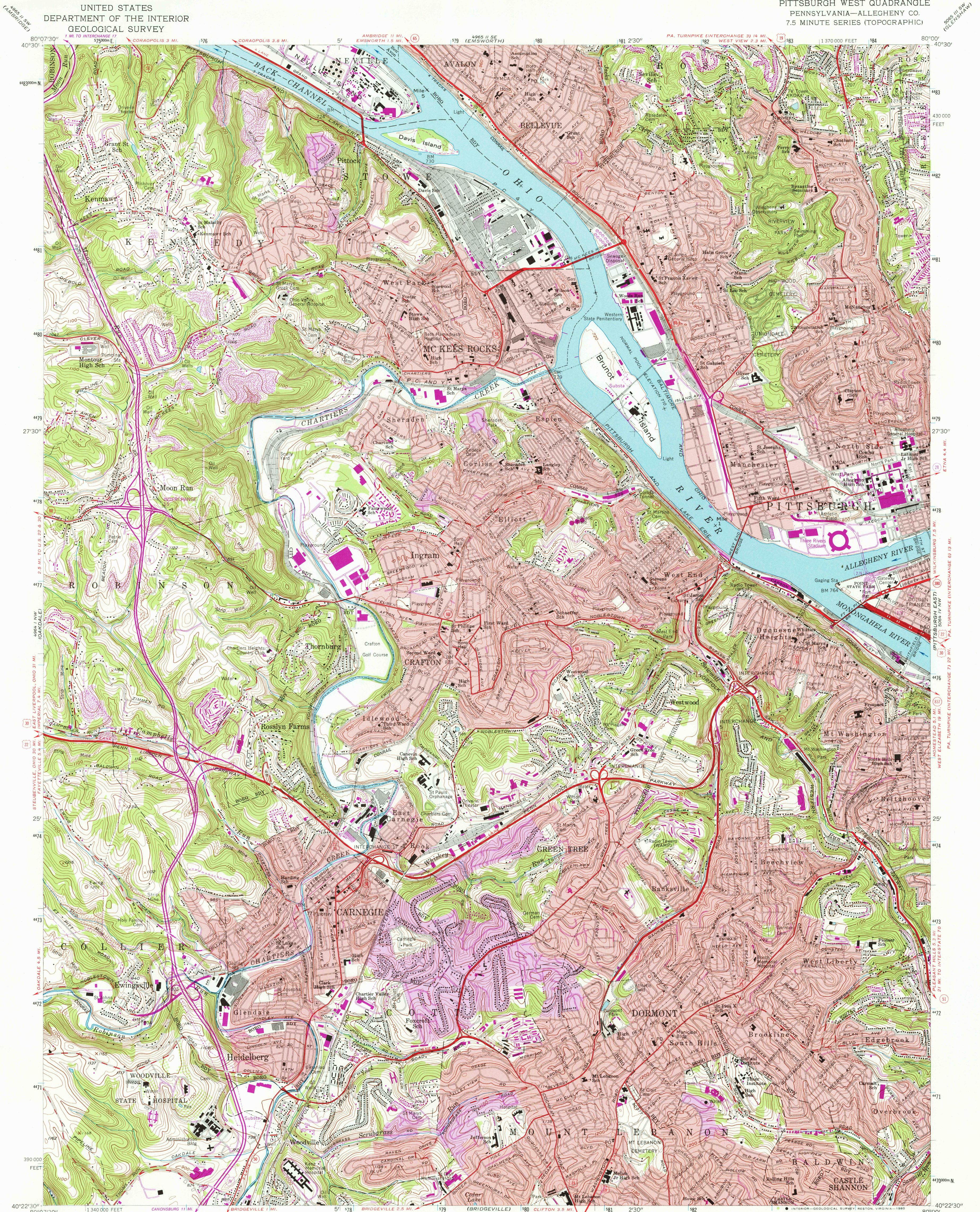
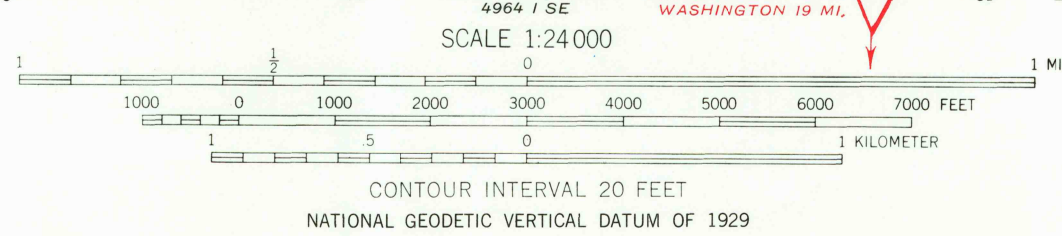


UNITED STATES
DEPARTMENT OF THE INTERIOR
GEOLOGICAL SURVEY

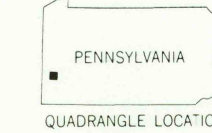
PITTSBURGH WEST QUADRANGLE
PENNSYLVANIA—ALLEGHENY CO.
7.5 MINUTE SERIES (TOPOGRAPHIC)



Mapped, edited, and published by the Geological Survey
Control by USGS, USC&GS, USCE, and the City of Pittsburgh
Topography by planetable surveys 1925-1941, and 1948
Revised 1960
Polyconic projection. 1927 North American Datum
10,000-foot grid based on Pennsylvania coordinate system, south zone
1000-meter Universal Transverse Mercator grid ticks,
zone 17, shown in blue
To place on the predicted North American Datum 1983
move the projection lines 4 meters south and
18 meters west as shown by dashed corner ticks
Red tint indicates areas in which only landmark buildings are shown
There may be private inholdings within the boundaries of
the National or State reservations shown on this map
Red tint indicates areas in which only landmark buildings are shown



ROAD CLASSIFICATION
Heavy-duty ——— Light-duty ———
Medium-duty ——— Unimproved dirt ———
Interstate Route ——— U.S. Route ——— State Route ———



USGS
Historical File
Topographic Division
PITTSBURGH WEST, PA.
N4022.5—W8000.77.5
1960
PHOTOREVISED 1979
DMA 4964 1 NE—SERIES V831

THIS MAP COMPLIES WITH NATIONAL MAP ACCURACY STANDARDS
FOR SALE BY U.S. GEOLOGICAL SURVEY, RESTON, VIRGINIA 22092
A FOLDER DESCRIBING TOPOGRAPHIC MAPS AND SYMBOLS IS AVAILABLE ON REQUEST

Revisions shown in purple compiled in cooperation with State of
Pennsylvania agencies from aerial photographs taken 1977 and other
source data. This information not field checked. Map edited 1979
Purple tint indicates extension of urban areas

AUG 14 1980