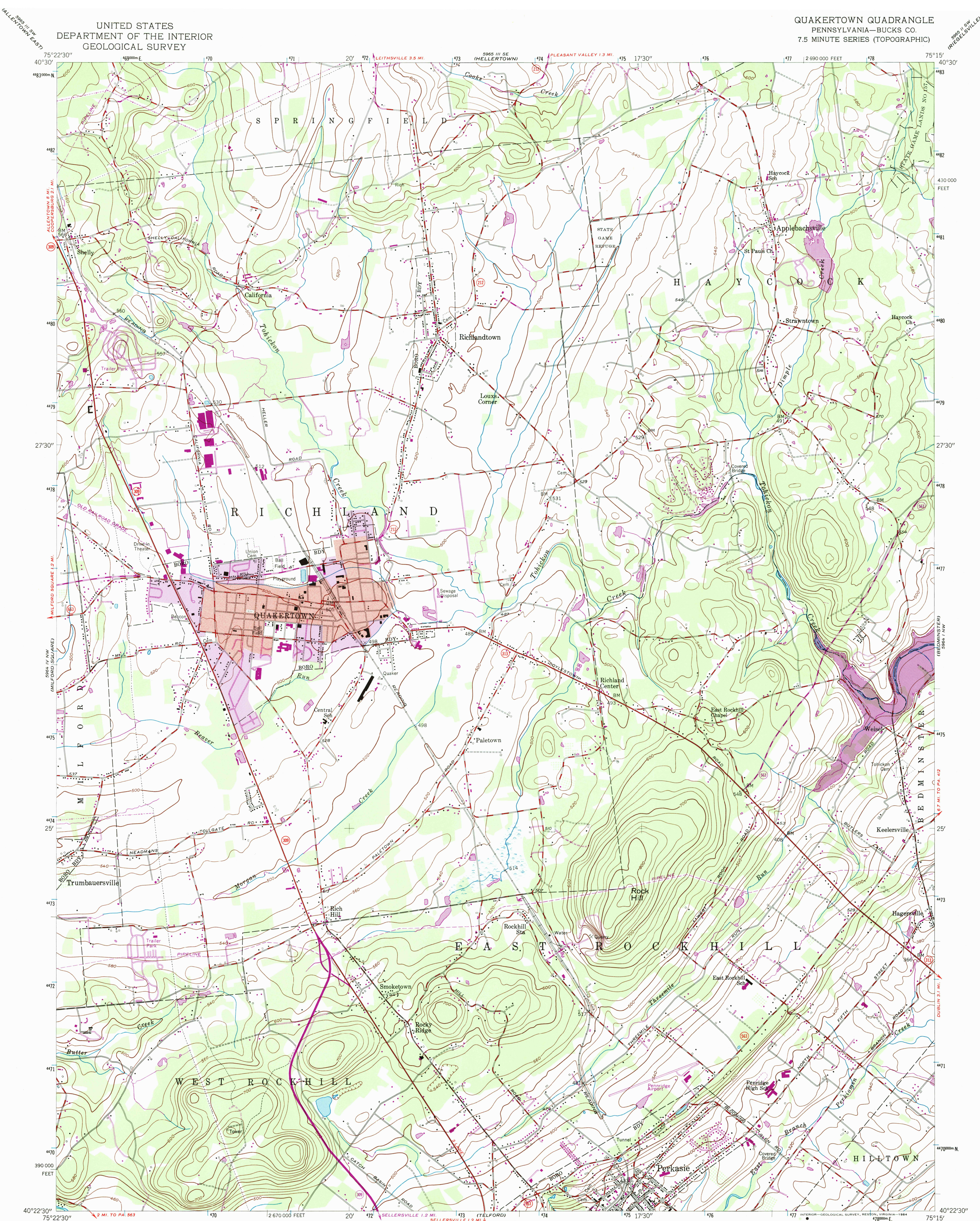


UNITED STATES
DEPARTMENT OF THE INTERIOR
GEOLOGICAL SURVEY

QUAKERTOWN QUADRANGLE
PENNSYLVANIA—BUCKS CO.
7.5 MINUTE SERIES (TOPOGRAPHIC)



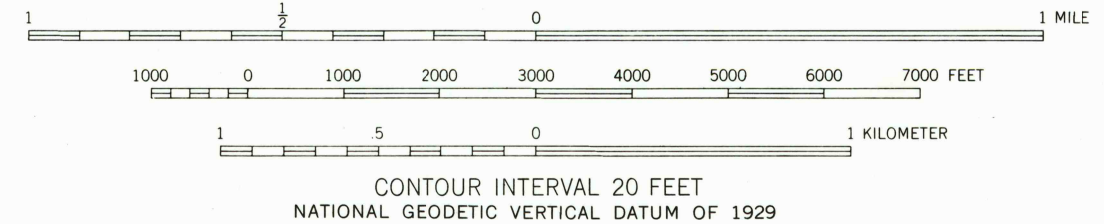
Mapped by the Army Map Service
Edited and published by the Geological Survey
Control by USGS and USC&GS

Topography from aerial photographs by photogrammetric methods. Field check 1943
Culture revised by the Geological Survey 1957

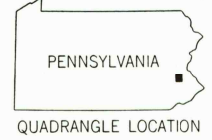
Polyconic projection. 1927 North American datum
10,000-foot grid based on Pennsylvania coordinate system, south zone
1000-meter Universal Transverse Mercator grid ticks, zone 18, shown in blue

Red tint indicates area in which only landmark buildings are shown
Purple hatching indicates area to be submerged by Nockamixon State Park Dam at elevation 395 feet

Map photoinspected 1982
No major culture or drainage changes observed



THIS MAP COMPLIES WITH NATIONAL MAP ACCURACY STANDARDS
FOR SALE BY U.S. GEOLOGICAL SURVEY, RESTON, VIRGINIA 22092
A FOLDER DESCRIBING TOPOGRAPHIC MAPS AND SYMBOLS IS AVAILABLE ON REQUEST



Revisions shown in purple compiled by the Geological Survey in cooperation with State of Pennsylvania agencies from aerial photographs taken 1968 and 1973. This information not field checked
Purple tint indicates extension of urban areas

ROAD CLASSIFICATION
Heavy-duty ——— Light-duty ———
Medium-duty ——— Unimproved dirt ———
○ State Route

QUAKERTOWN, PA.

N4022.5—W7515/7.5
PHOTOINSPECTED 1982
1957
PHOTOREVISED 1968 AND 1973
AMS 5964 IV NE—SERIES V831

