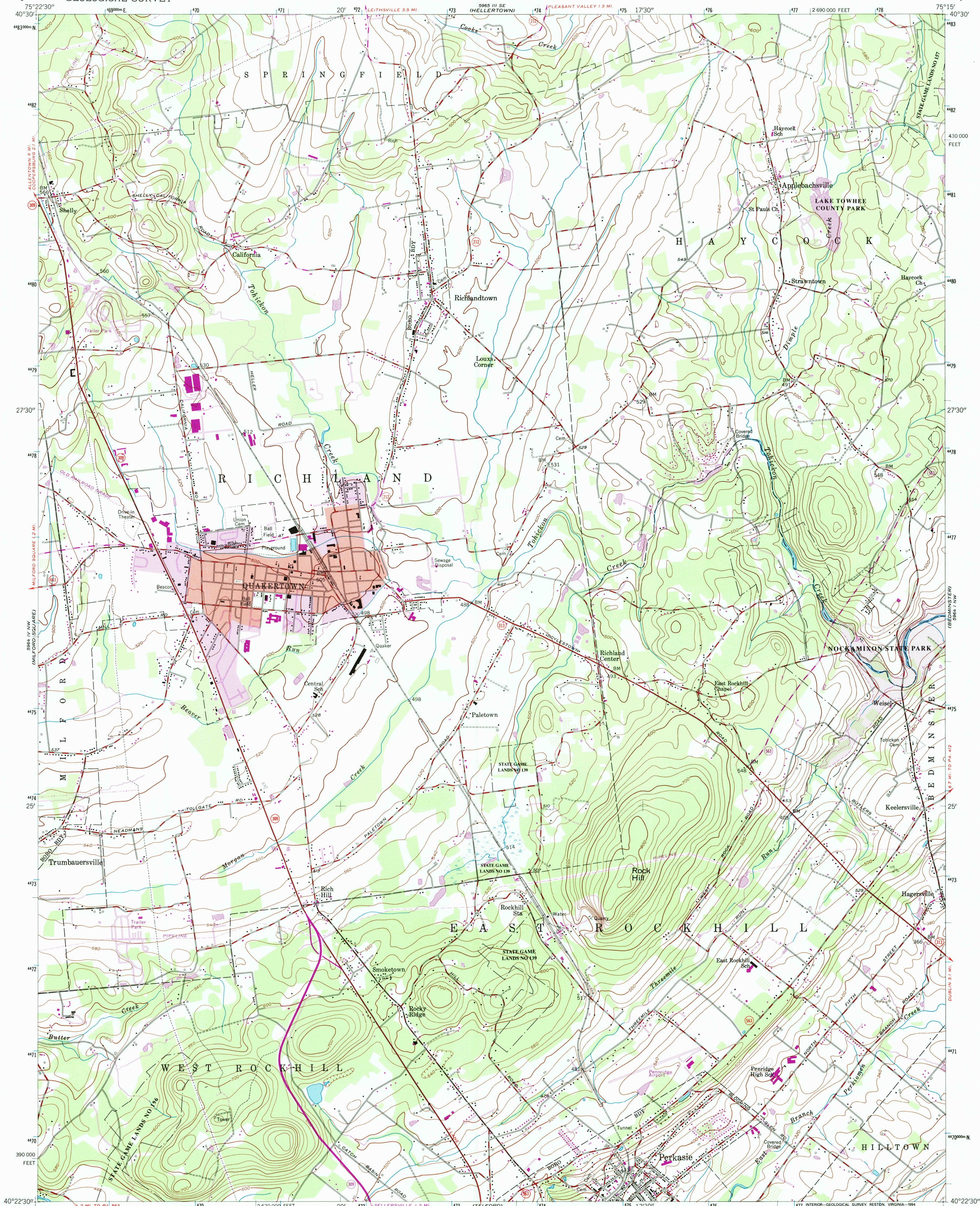
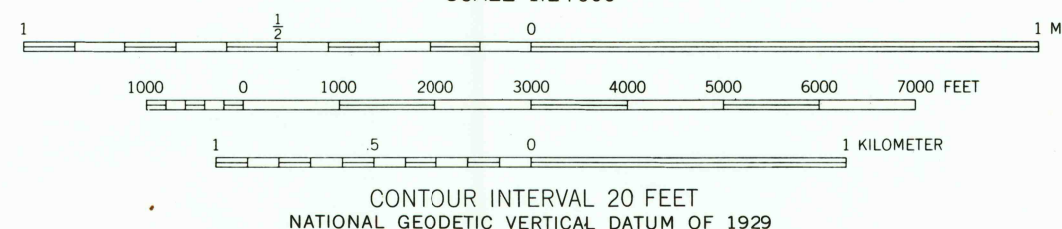
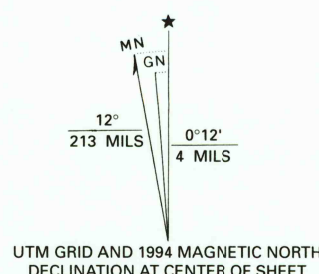


UNITED STATES
DEPARTMENT OF THE INTERIOR
GEOLOGICAL SURVEY

QUAKERTOWN QUADRANGLE
PENNSYLVANIA—BUCKS CO.
7.5 MINUTE SERIES (TOPOGRAPHIC)



Map by the Army Map Service
Edited and published by the Geological Survey
Control by USGS and NOS/NOAA
Topography by photogrammetric methods from aerial photographs
Field checked 1943. Culture revised by the Geological Survey 1957
North American Datum of 1927 (NAD 27). Projection and
10 000-foot ticks: Pennsylvania coordinate system, south zone
(Lambert conformal conic)
Blue 1000-meter Universal Transverse Mercator grid ticks, zone 18
North American Datum of 1983 (NAD 83) is shown by dashed
corner ticks. The values of the shift between NAD 27 and NAD 83
for 7.5-minute intersections are obtainable from National Geodetic
Survey NADCON software
There may be private inholdings within the boundaries of
the National or State reservations shown on this map
Red tint indicates areas in which only landmark buildings are shown
Photoinspected from 1992 source; no major culture or drainage
changes observed. Boundaries and names revised 1994



THIS MAP COMPLIES WITH NATIONAL MAP ACCURACY STANDARDS
FOR SALE BY U.S. GEOLOGICAL SURVEY, DENVER, COLORADO 80225, OR RESTON, VIRGINIA 22092
A FOLDER DESCRIBING TOPOGRAPHIC MAPS AND SYMBOLS IS AVAILABLE ON REQUEST



ROAD CLASSIFICATION
Primary highway, hard surface
Secondary highway, hard surface
Unimproved road
Light-duty road, hard or improved surface
Unimproved road
Interstate Route
U. S. Route
State Route

Revisions shown in purple compiled by the Geological Survey
in cooperation with State of Pennsylvania agencies from aerial
photographs taken 1968 and 1973. This information not
field checked
Purple tint indicates extension of urban areas
Purple hatching indicates area to be submerged by
Nockamixon State Park Dam at elevation 395 feet

QUAKERTOWN, PA.
40075-D3-TF-024
1957
PHOTOREVISED 1968 and 1973
MINOR REVISION 1994
DMA 5964 IV NE - SERIES V831

USGS AND HISTORICAL MAP ARCHIVES
RETURN TO:
USGS
9730307465372
PA 024
TF