

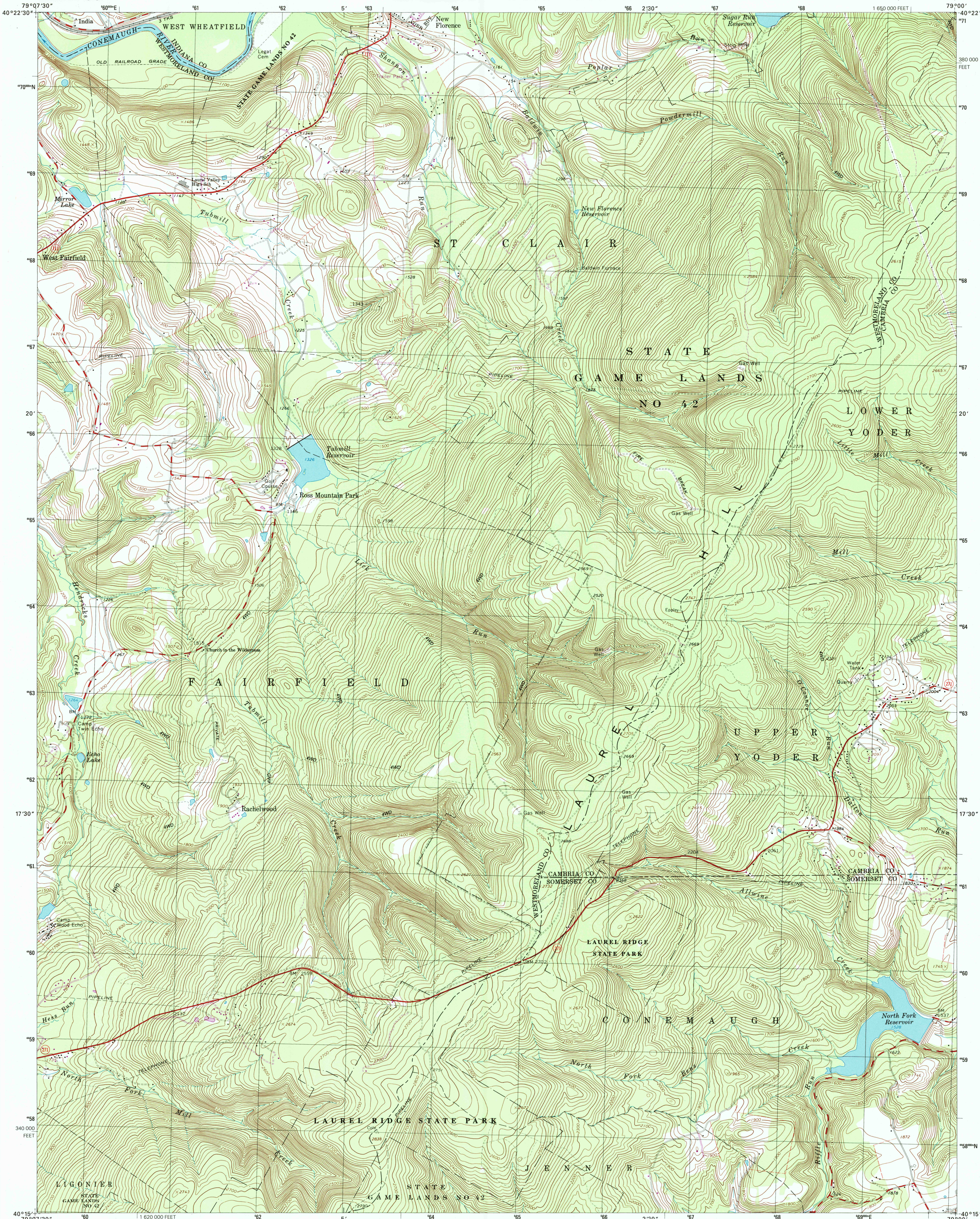


U.S. DEPARTMENT OF THE INTERIOR  
U.S. GEOLOGICAL SURVEY

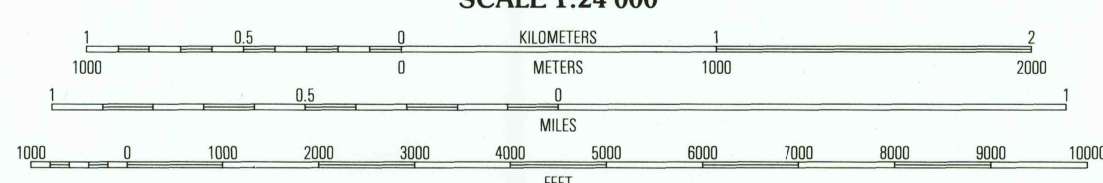
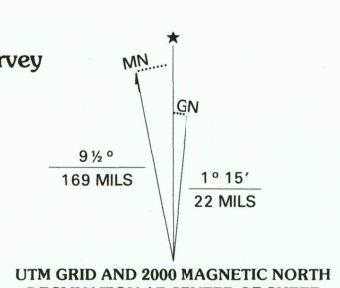


COMMONWEALTH OF PENNSYLVANIA  
DEPARTMENT OF CONSERVATION AND NATURAL RESOURCES  
BUREAU OF TOPOGRAPHIC AND GEOLOGIC SURVEY

RACHELWOOD QUADRANGLE  
PENNSYLVANIA  
7.5-MINUTE SERIES (TOPOGRAPHIC)



Produced by the United States Geological Survey  
in cooperation with Pennsylvania Department of Conservation  
and Natural Resources, Bureau of Topographic and Geologic Survey  
Topography compiled 1962. Planimetry derived from imagery taken  
1973 and other sources. Photorevised using imagery dated 1998;  
no major culture or drainage changes observed. Survey control  
current as of 1964. Boundaries, other than corporate, revised 2000  
North American Datum of 1927 (NAD 27). Projection and  
10 000-foot ticks. Pennsylvania coordinate system, south zone  
(Lambert conformal conic)  
1000-meter Universal Transverse Mercator grid, zone 17  
North American Datum of 1983 (NAD 83) is shown by dashed  
corner ticks. The values of the shift between NAD 27 and NAD 83  
for 7.5-minute intersections are obtainable from National Geodetic  
Survey NADCON software  
There may be private inholdings within the boundaries of  
the National or State reservations shown on this map  
Information shown in purple may not meet USGS content standards  
and may conflict with previously mapped contours



CONTOUR INTERVAL 20 FEET  
NATIONAL GEODETIC VERTICAL DATUM OF 1929  
TO CONVERT FROM FEET TO METERS, MULTIPLY BY 0.3048

THIS MAP COMPLIES WITH NATIONAL MAP ACCURACY STANDARDS  
FOR SALE BY U.S. GEOLOGICAL SURVEY, P.O. BOX 25286, DENVER, COLORADO 80225  
A FOLDER DESCRIBING TOPOGRAPHIC MAPS AND SYMBOLS IS AVAILABLE ON REQUEST



QUADRANGLE LOCATION

ROAD CLASSIFICATION  
Primary highway  
hard surface .....  
Secondary highway  
hard surface .....  
Light-duty road, hard or  
improved surface .....  
Unimproved road .....  
Interstate Route  
U.S. Route  
State Route

1	2	3	1 Bolivar
			2 New Florence
			3 Vintondale
4	5		4 Wilkes
			5 Johnstown
			6 Leggett
6	7	8	7 Boswell
			8 Houserville

ADJOINING 7.5 QUADRANGLE NAMES

RACHELWOOD, PA  
1998  
NIMA 5164 1SE-SERIES V831

RECEIVED  
NOV 2 0 2000  
USGS WMD  
HISTORICAL MAP ARCHIVES

