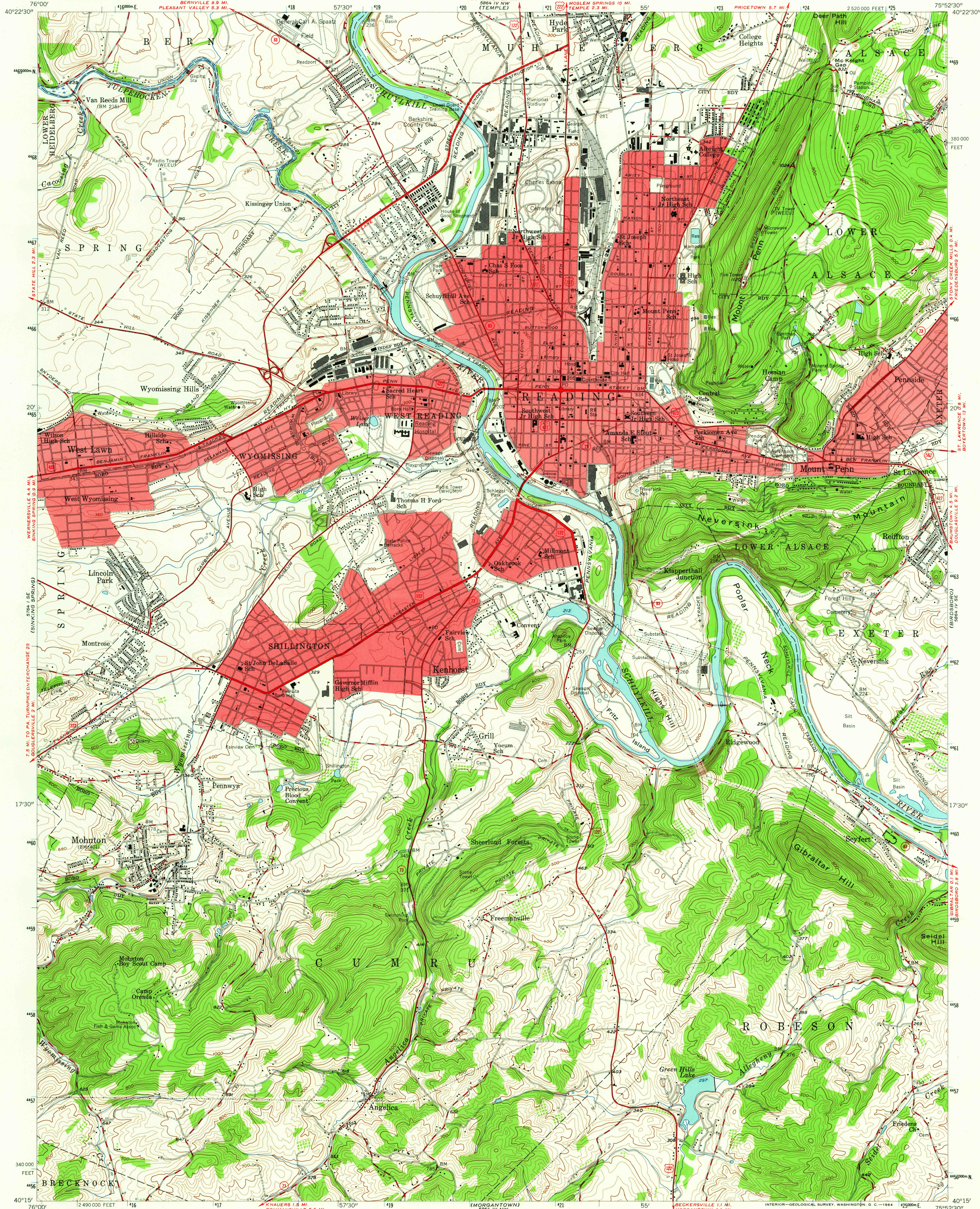


UNITED STATES  
DEPARTMENT OF THE INTERIOR  
GEOLOGICAL SURVEY

READING QUADRANGLE  
PENNSYLVANIA—BERKS CO.  
7.5 MINUTE SERIES (TOPOGRAPHIC)  
SW 14 READING 15' QUADRANGLE



Mapped, edited, and published by the Geological Survey  
Control by USGS, USCGS, and USCE  
Topography from aerial photographs by multiplex methods  
Aerial photographs taken 1947. Field check 1956  
Polyconic projection. 1927 North American datum  
10,000-foot grid based on Pennsylvania coordinate system,  
south zone  
1,000-meter Universal Transverse Mercator grid ticks  
zone 18, shown in blue  
Red tint indicates areas in which only  
landmark buildings are shown

UTM GRID AND 1956 MAGNETIC NORTH  
DECLINATION AT CENTER OF SHEET

SCALE 1:24,000  
1 MILE  
1 KILOMETER  
CONTOUR INTERVAL 20 FEET  
DATUM IS MEAN SEA LEVEL

PENNSYLVANIA  
QUADRANGLE LOCATION

ROAD CLASSIFICATION  
Heavy-duty ——— Light-duty ———  
Medium-duty ——— Unimproved dirt ———  
U.S. Route ——— State Route ———  
USGS  
HISTORICAL FILE  
TOPOGRAPHIC DIVISION  
READING, PA.  
SW 14 READING 15' QUADRANGLE  
N 4015—W 7552.5/7.5  
1956  
AMS 5864 IV SW—SERIES V831

THIS MAP COMPLIES WITH NATIONAL MAP ACCURACY STANDARDS  
FOR SALE BY U. S. GEOLOGICAL SURVEY, WASHINGTON 25, D. C.  
A FOLDER DESCRIBING TOPOGRAPHIC MAPS AND SYMBOLS IS AVAILABLE ON REQUEST