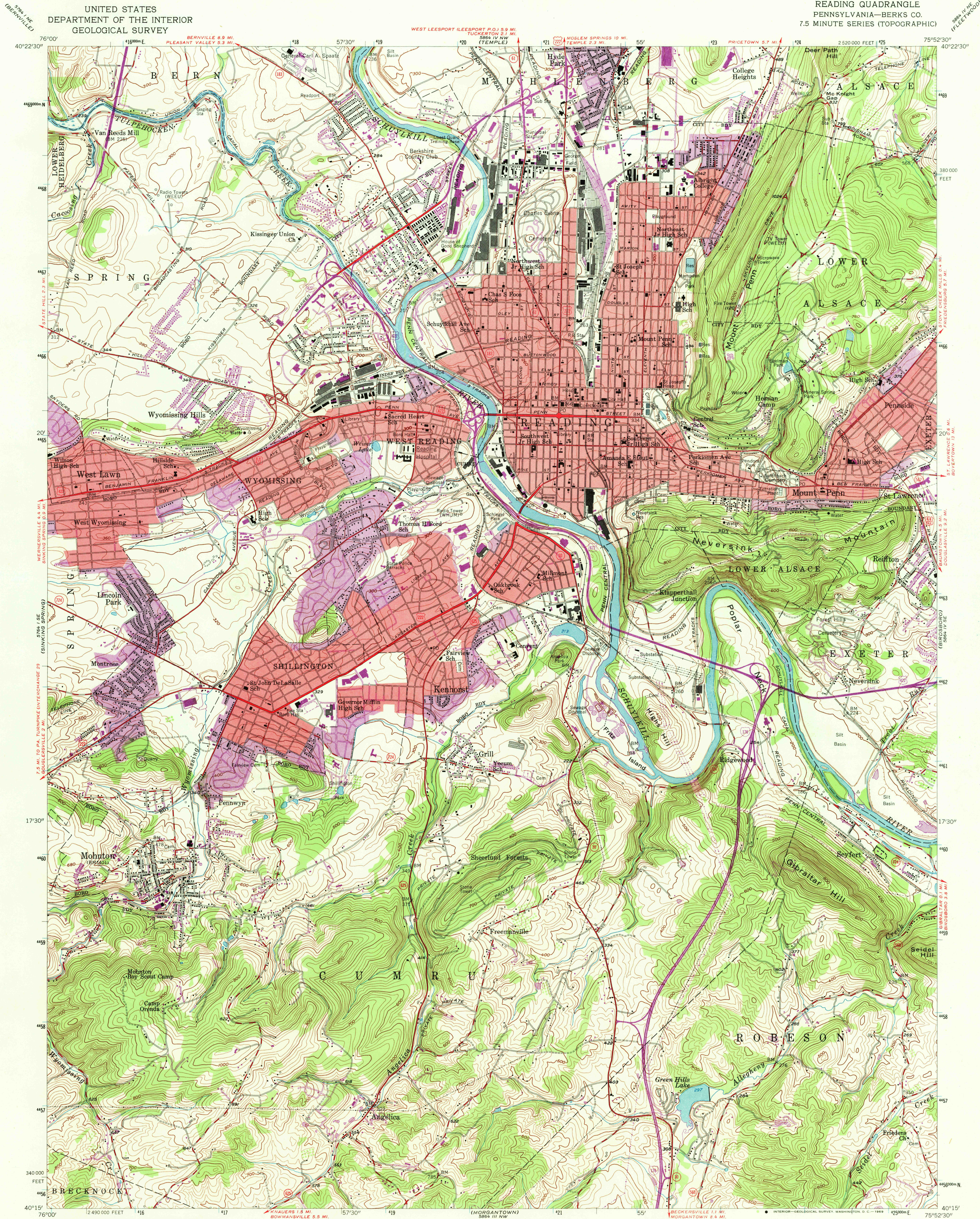
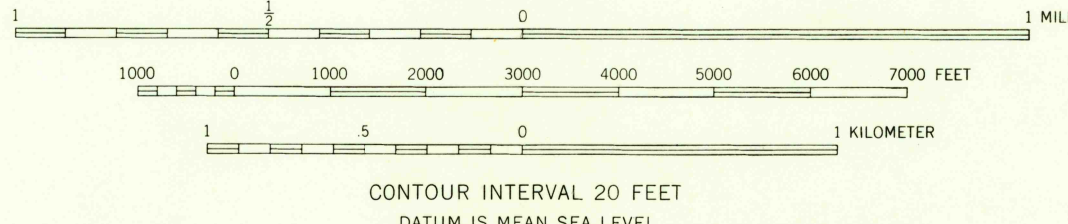
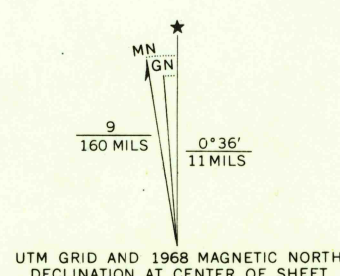


UNITED STATES  
DEPARTMENT OF THE INTERIOR  
GEOLOGICAL SURVEY

READING QUADRANGLE  
PENNSYLVANIA—BERKS CO.  
7.5 MINUTE SERIES (TOPOGRAPHIC)

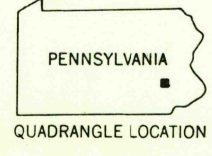


Mapped, edited, and published by the Geological Survey  
Control by USGS, USC&GS, and USCE  
Topography from aerial photographs by multiplex methods  
Aerial photographs taken 1947. Field check 1956  
Polyconic projection. 1927 North American datum  
10,000-foot grid based on Pennsylvania coordinate system,  
south zone  
1,000-meter Universal Transverse Mercator grid ticks  
zone 18, shown in blue  
Red tint indicates areas in which only  
landmark buildings are shown.  
Revisions shown in purple compiled in cooperation with  
State of Pennsylvania agencies, from aerial photographs  
taken 1968. This information not field checked  
Purple tint indicates extension of urban areas



THIS MAP COMPLIES WITH NATIONAL MAP ACCURACY STANDARDS  
FOR SALE BY U.S. GEOLOGICAL SURVEY, WASHINGTON, D.C. 20242  
A FOLDER DESCRIBING TOPOGRAPHIC MAPS AND SYMBOLS IS AVAILABLE ON REQUEST

USGS  
HISTORICAL FILE  
TOPOGRAPHIC DIVISION



U.S.G.S.  
FILE COPY  
TOPOGRAPHIC DIVISION

ROAD CLASSIFICATION  
Heavy-duty ——— Light-duty ———  
Medium-duty ——— Unimproved dirt ———  
Interstate Route U. S. Route State Route

READING, PA.  
N4015-W7552.5/7.5  
1956  
PHOTOREVISED 1968  
AMS 5864 IV SW—SERIES V831

APR 25 1969  
4700