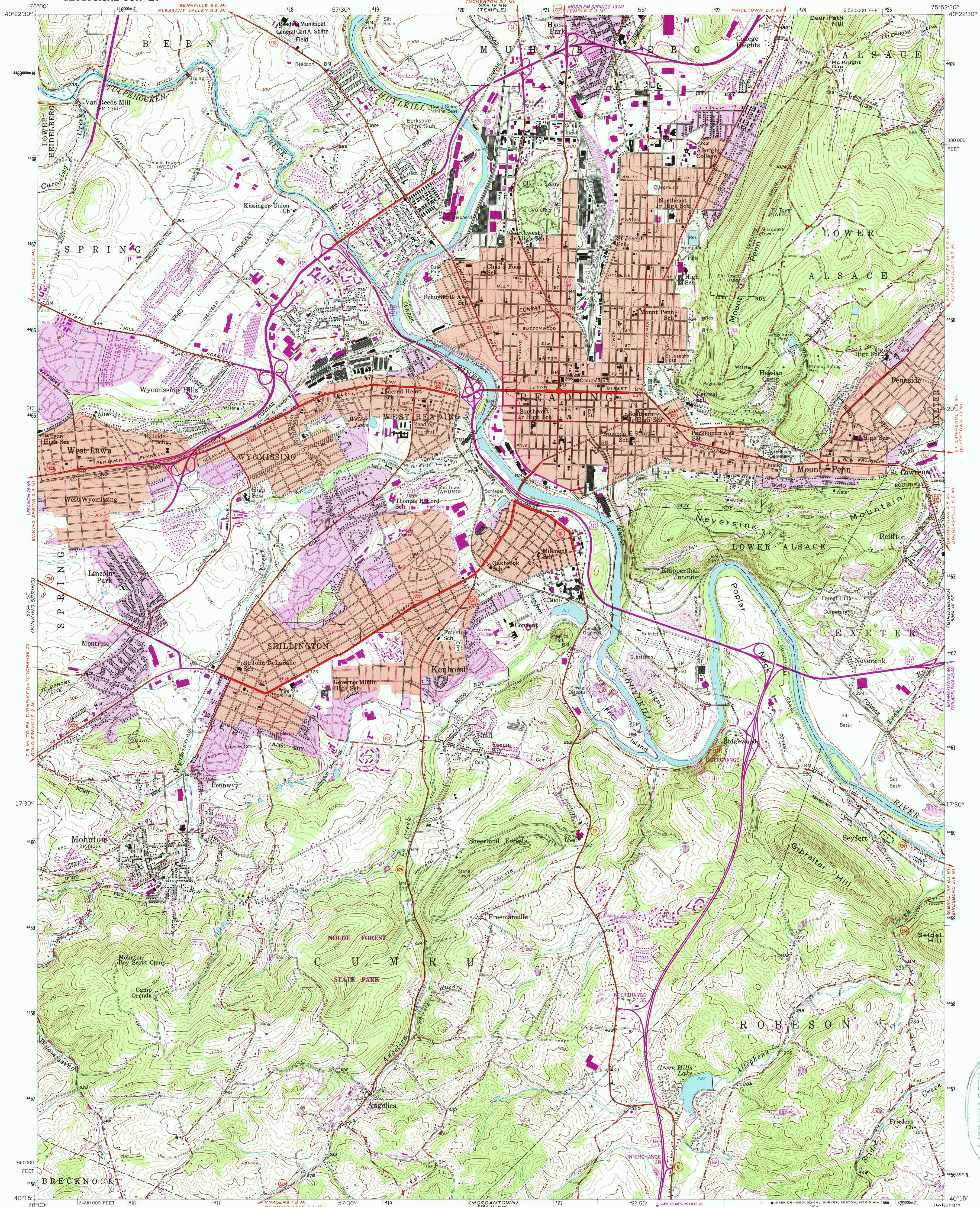
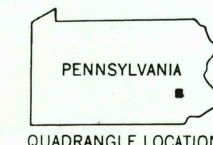
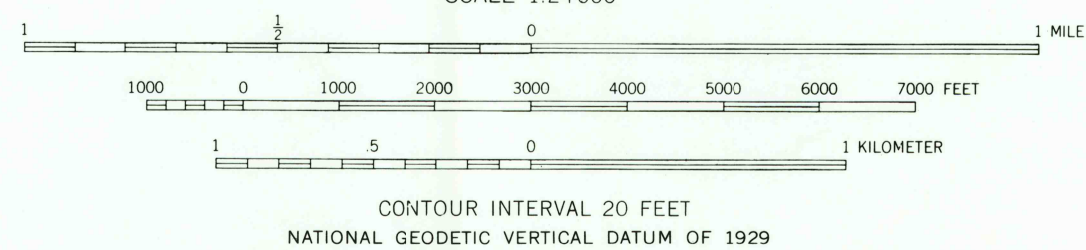
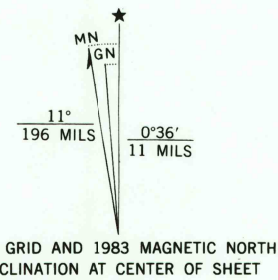


UNITED STATES
DEPARTMENT OF THE INTERIOR
GEOLOGICAL SURVEY

READING QUADRANGLE
PENNSYLVANIA—BERKS CO.
7.5 MINUTE SERIES (TOPOGRAPHIC)



Mapped, edited, and published by the Geological Survey
Control by USGS, NOS/NOAA, and USCE
Topography by photogrammetric methods from aerial photographs
taken 1947. Field checked 1956
Polyconic projection. 10,000-foot grid ticks based on Pennsylvania
coordinate system, south zone. 1000-meter Universal Transverse
Mercator grid ticks, zone 18, shown in blue
To place on the predicted North American Datum 1983
move the projection lines 6 meters south and
30 meters west as shown by dashed corner ticks
Red tint indicates areas in which only landmark buildings are shown
There may be private inholdings within the boundaries of
the National or State reservations shown on this map



ROAD CLASSIFICATION
Heavy-duty ——— Light-duty ———
Medium-duty ——— Unimproved dirt ———
Interstate Route U.S. Route State Route

READING, PA.
40075-C8-TF-024

1956
PHOTOREVISED 1983
DMA 5864 IV SW—SERIES V831

THIS MAP COMPLIES WITH NATIONAL MAP ACCURACY STANDARDS
FOR SALE BY U.S. GEOLOGICAL SURVEY
DENVER, COLORADO 80225 OR RESTON, VIRGINIA 22092
A FOLDER DESCRIBING TOPOGRAPHIC MAPS AND SYMBOLS IS AVAILABLE ON REQUEST

Revisions shown in purple and woodland compiled in cooperation with
Commonwealth of Pennsylvania agencies from aerial photographs
taken 1981 and other sources. This information not field checked
Map edited 1983
Purple tint indicates extension of urban areas

USGS 7.5 MINUTE TOPOGRAPHIC MAP
SEP 14 1988
READING FILE COPY