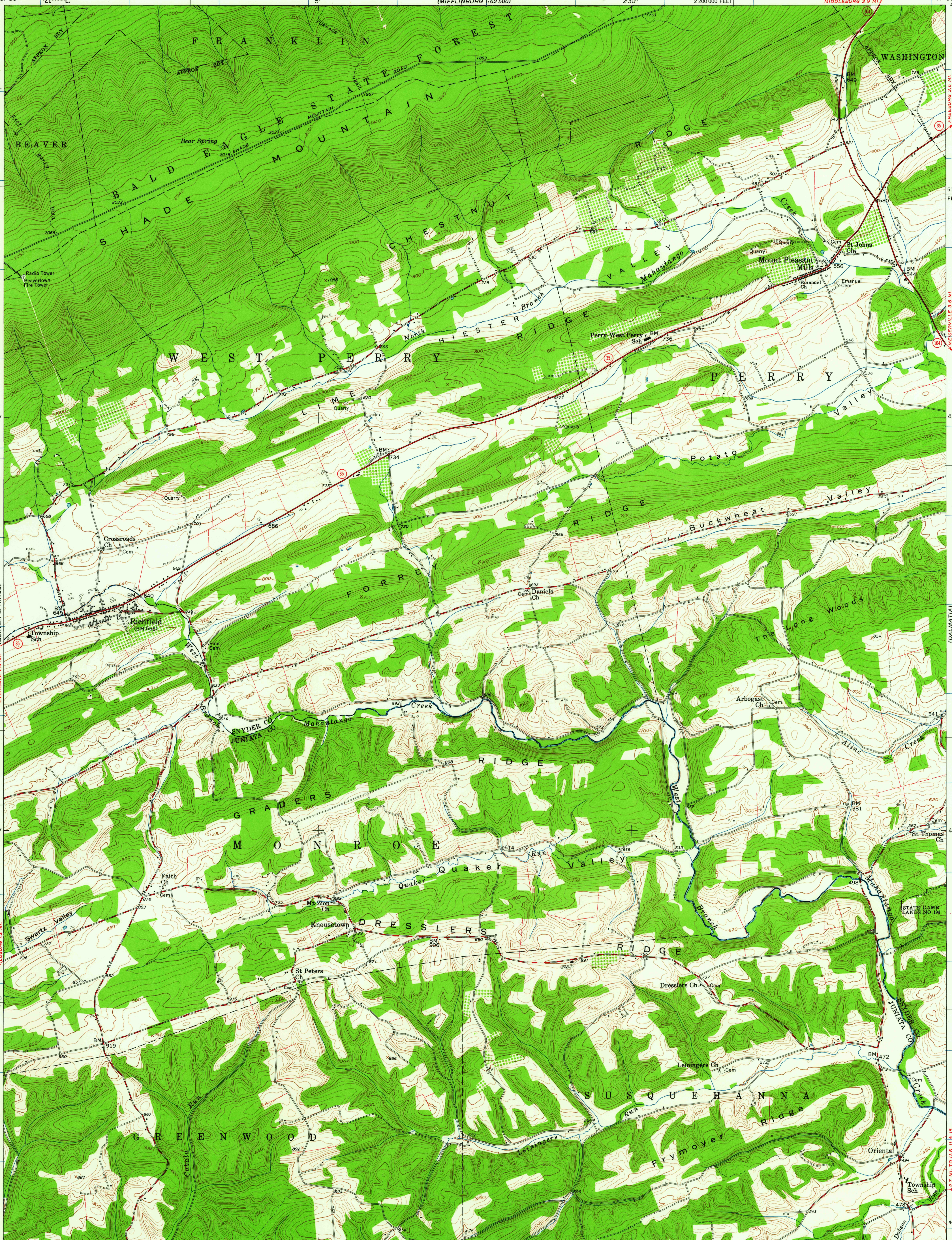


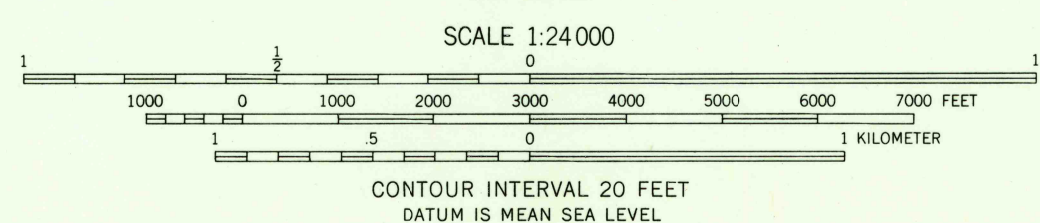
UNITED STATES
DEPARTMENT OF THE INTERIOR
GEOLOGICAL SURVEY

RICHFIELD QUADRANGLE
PENNSYLVANIA
7.5 MINUTE SERIES (TOPOGRAPHIC)
NE 1/4 MILLERTOWN 15' QUADRANGLE
MIDDLEBURG 13 MI.
MIDDLEBURG 3.9 MI.



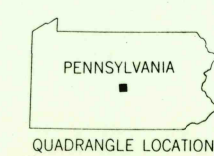
Mapped, edited, and published by the Geological Survey
Control by USGS and USC&GS
Topography from aerial photographs by photogrammetric methods
Aerial photographs taken 1958. Field check 1959
Polyconic projection. 1927 North American datum
10,000-foot grid based on Pennsylvania coordinate system,
south zone
1000-meter Universal Transverse Mercator grid ticks,
zone 18, shown in blue
Fine red dashed lines indicate selected fence and field lines where
generally visible on aerial photographs. This information is unchecked

TRUE NORTH
MAGNETIC NORTH
APPROXIMATE MEAN
DECLINATION, 1959



THIS MAP COMPLIES WITH NATIONAL MAP ACCURACY STANDARDS
FOR SALE BY U.S. GEOLOGICAL SURVEY, WASHINGTON 25, D. C.
A FOLDER DESCRIBING TOPOGRAPHIC MAPS AND SYMBOLS IS AVAILABLE ON REQUEST

USGS
HISTORICAL FILE
TOPOGRAPHIC DIVISION



ROAD CLASSIFICATION
Heavy-duty ——— Light-duty ———
Medium-duty ——— Unimproved dirt ———
○ State Route

USGS
FILE COPY
TOPOGRAPHIC DIVISION
RICHFIELD, PA.
NE 1/4 MILLERTOWN 15' QUADRANGLE
N 4037.5—W 7700/7.5
1959

JUL 26 1961

3080