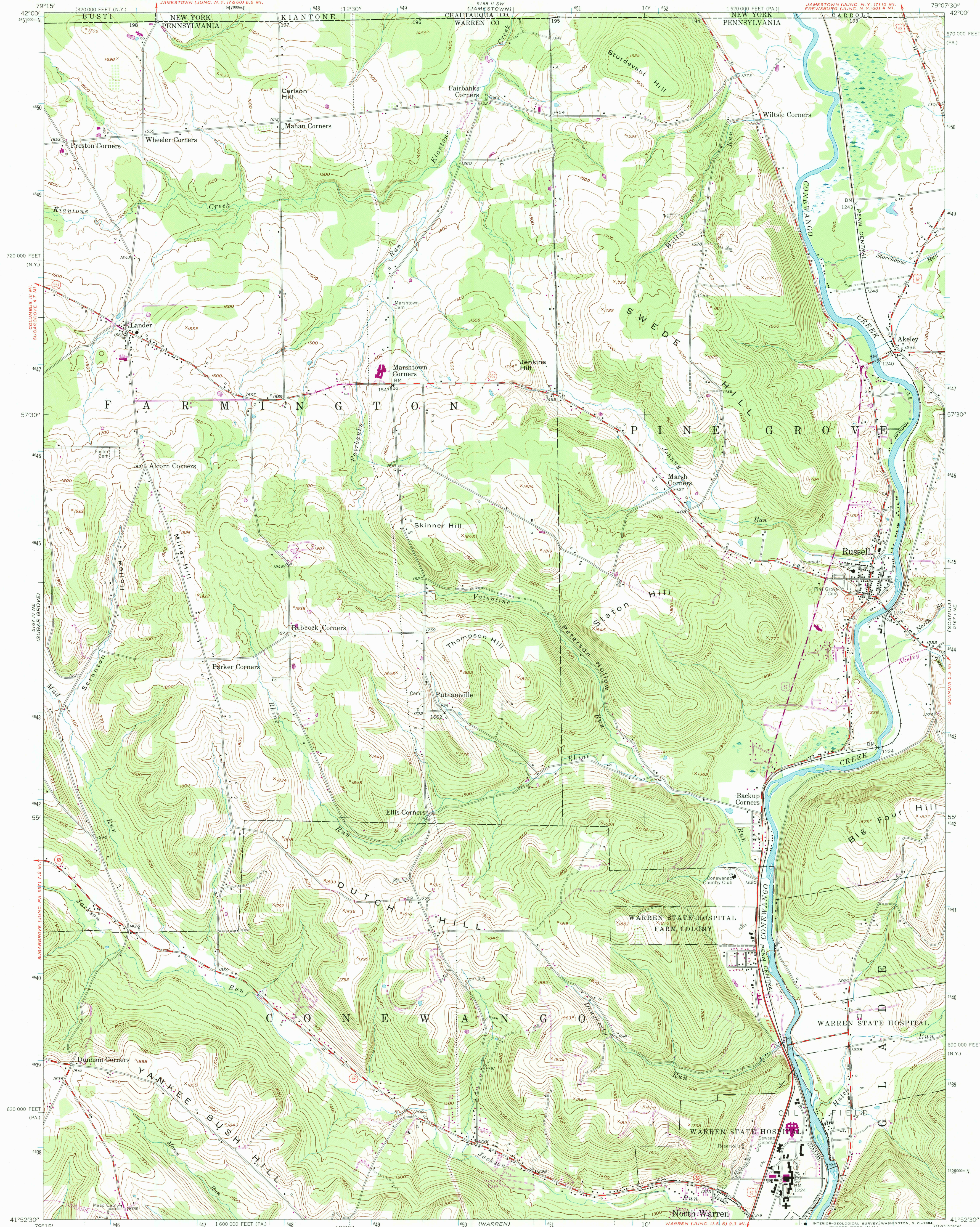


UNITED STATES  
DEPARTMENT OF THE INTERIOR  
GEOLOGICAL SURVEY

RUSSELL QUADRANGLE  
PENNSYLVANIA—NEW YORK  
7.5 MINUTE SERIES (TOPOGRAPHIC)



Mapped, edited, and published by the Geological Survey

Control by USGS and USC&GS

Topography from aerial photographs by photogrammetric methods. Aerial photographs taken 1953. Field check 1954

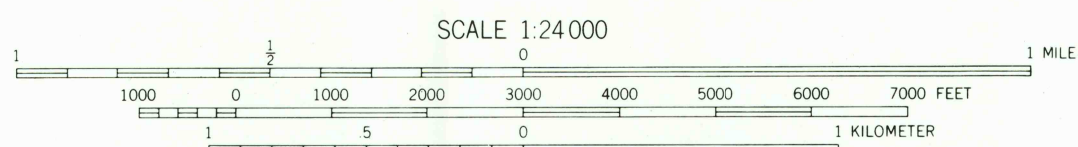
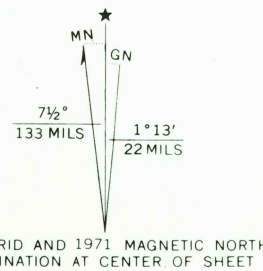
Polyconic projection. 1927 North American datum

10,000-foot grids based on Pennsylvania coordinate system, north zone, and New York coordinate system, west zone

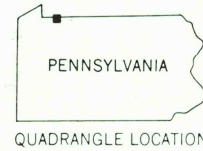
Unchecked elevations are shown in brown

1000-meter Universal Transverse Mercator grid ticks, zone 17, shown in blue

Revisions shown in purple compiled in cooperation with State of Pennsylvania agencies from aerial photographs taken 1971. This information not field checked



CONTOUR INTERVAL 20 FEET  
DATUM IS MEAN SEA LEVEL



ROAD CLASSIFICATION	
Heavy-duty	Light-duty
Medium-duty	Unimproved dirt
U. S. Route	State Route

RUSSELL, PA.—N. Y.

N4152.5—W7907.5/7.5  
PHOTOINSPECTED 1977  
1954  
PHOTOREVISED 1971  
AMS 5167 1 NW—SERIES V831

THIS MAP COMPLIES WITH NATIONAL MAP ACCURACY STANDARDS  
FOR SALE BY U. S. GEOLOGICAL SURVEY, WASHINGTON, D. C. 20242  
A FOLDER DESCRIBING TOPOGRAPHIC MAPS AND SYMBOLS IS AVAILABLE ON REQUEST

Map photoinspected 1977  
No major culture or drainage changes observed

RETURN TO:  
USGS AND HISTORICAL MAP ARCHIVES