

536 II SW  
(ENTIRE)

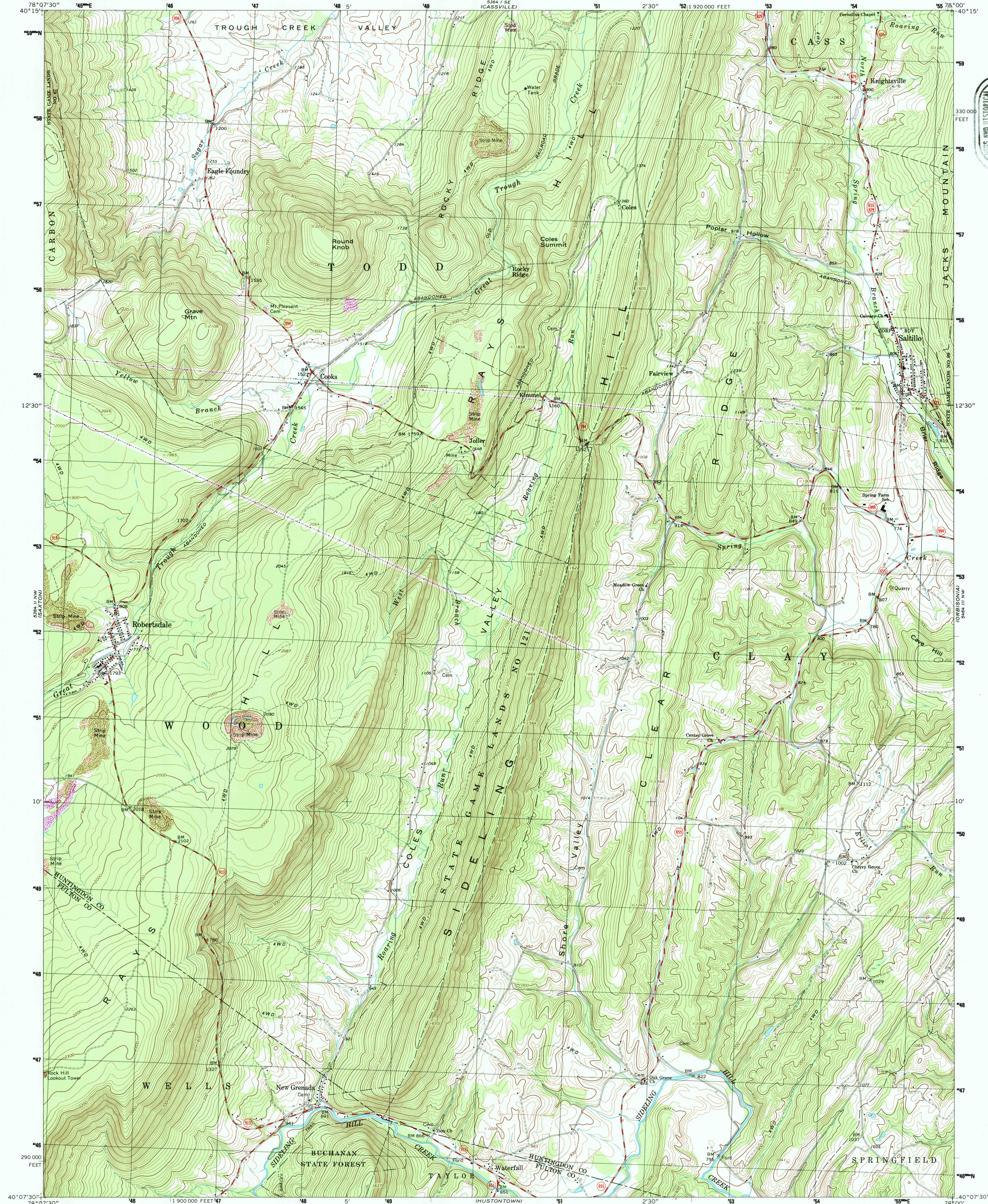
UNITED STATES  
DEPARTMENT OF THE INTERIOR  
GEOLOGICAL SURVEY

COMMONWEALTH OF PENNSYLVANIA  
STATE PLANNING BOARD  
TOPOGRAPHIC AND GEOLOGIC SURVEY

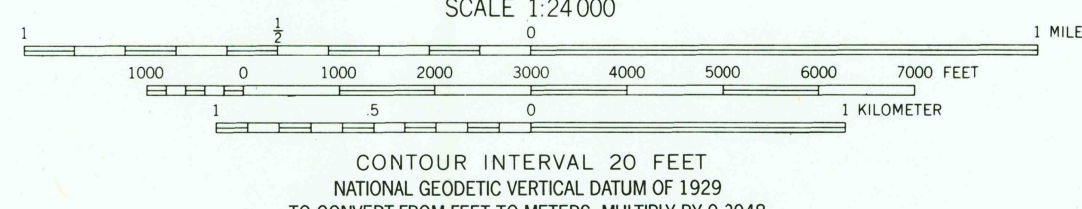
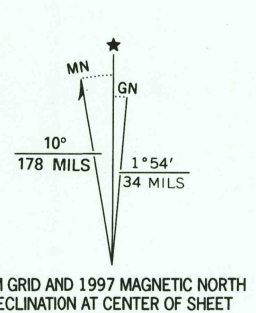
SALTILLO QUADRANGLE  
PENNSYLVANIA  
7.5 MINUTE SERIES (TOPOGRAPHIC)

536 II SW  
(BUTLER AREA)

U.S. GEOLOGICAL SURVEY  
MAP ARCHIVES  
OCT 3 1997  
REC'D FILE COPY



Produced by the United States Geological Survey  
Topography compiled 1967. Planimetry derived from imagery taken 1973. Photorevised using imagery dated 1984; no major culture or drainage changes observed. Survey control current as of 1968. Boundaries, other than corporate, revised 1997.  
North American Datum of 1927 (NAD 27). Projection and 10 000-foot ticks: Pennsylvania coordinate system, south zone (Lambert conformal conic).  
1000-meter Universal Transverse Mercator grid, zone 17.  
North American Datum of 1983 (NAD 83) is shown by dashed corner ticks. The values of the shift between NAD 27 and NAD 83 for 7.5-minute intersections are obtainable from National Geodetic Survey NADCON software.  
There may be private inholdings within the boundaries of the National or State reservations shown on this map.  
Information shown in purple may not meet USGS content standards and may conflict with previously mapped contours.



ROAD CLASSIFICATION  
Primary highway, hard surface  
Secondary highway, hard surface  
Light-duty road, hard or improved surface  
Unimproved road  
Interstate Route  
U. S. Route  
State Route

SALTILLO, PA.

1994

DMA 5364 II NE-SERIES V831

ISBN 0-607-87255-6  
9 780607 872553