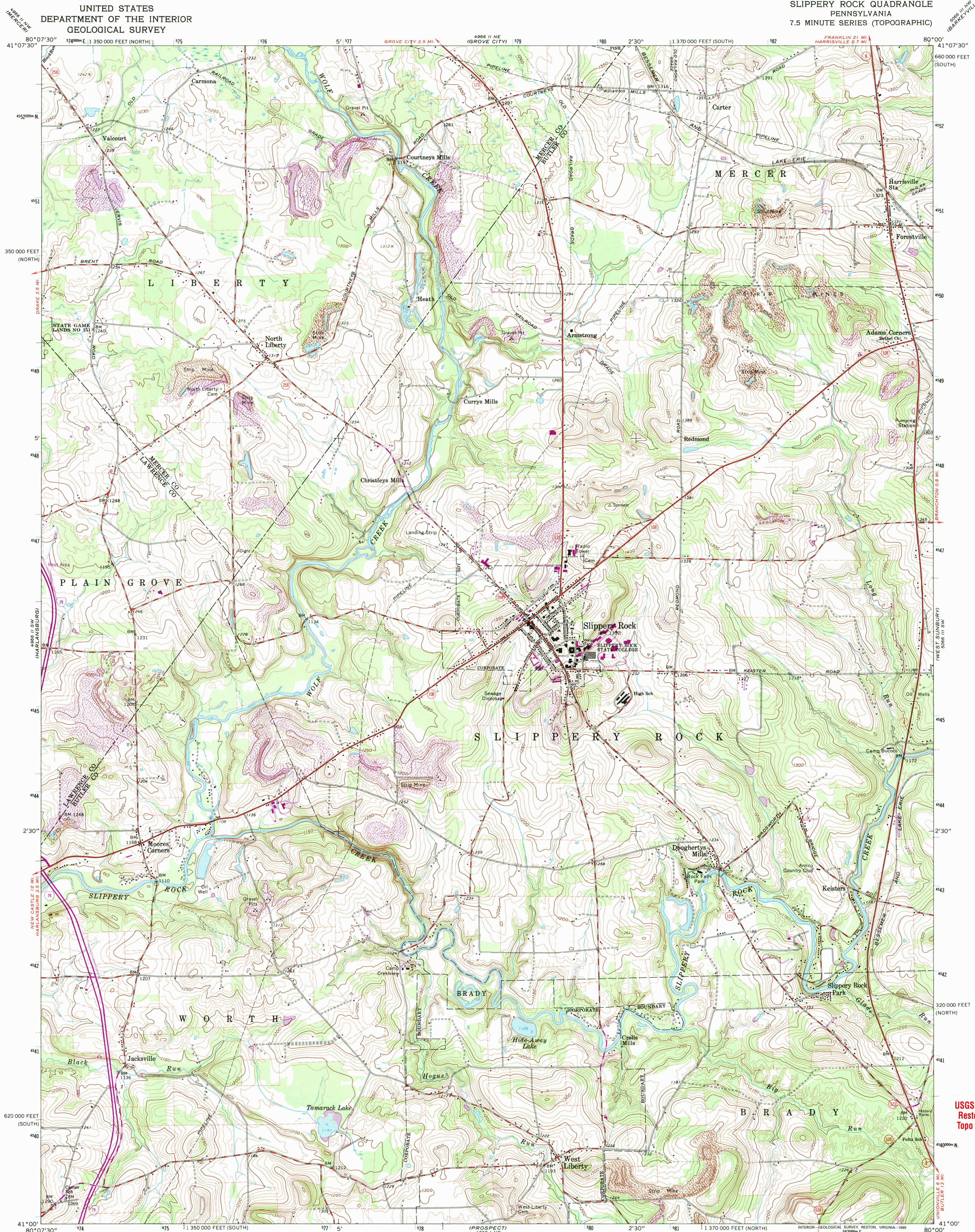


UNITED STATES  
DEPARTMENT OF THE INTERIOR  
GEOLOGICAL SURVEY

SLIPPERY ROCK QUADRANGLE  
PENNSYLVANIA  
7.5 MINUTE SERIES (TOPOGRAPHIC)



Mapped, edited, and published by the Geological Survey

Control by USGS and USC&GS

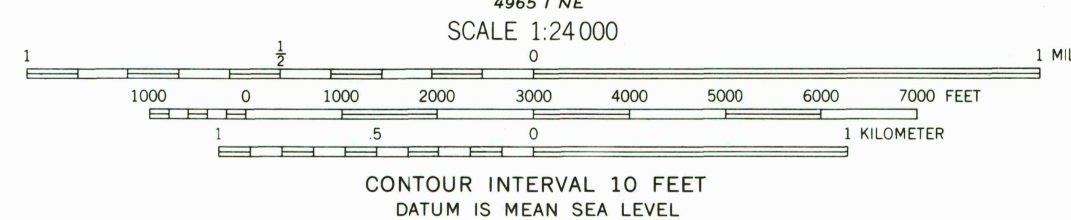
Topography by photogrammetric methods from aerial  
photographs taken 1958. Field checked 1961

Polyconic projection. 1927 North American datum  
10,000-foot grids based on Pennsylvania coordinate system,  
south and north zones  
1000-meter Universal Transverse Mercator grid ticks,  
zone 17, shown in blue

Fine red dashed lines indicate selected fence and field lines where  
generally visible on aerial photographs. This information is unchecked

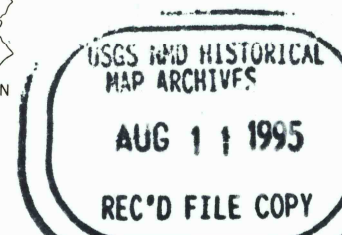
Revisions shown in purple compiled in cooperation with  
State of Pennsylvania agencies from aerial photographs  
taken 1970. This information not field checked

Map photorevised 1977  
No major culture or drainage changes observed



THIS MAP COMPLIES WITH NATIONAL MAP ACCURACY STANDARDS  
FOR SALE BY U.S. GEOLOGICAL SURVEY  
DENVER, COLORADO 80225, OR RESTON, VIRGINIA 22092  
A FOLDER DESCRIBING TOPOGRAPHIC MAPS AND SYMBOLS IS AVAILABLE ON REQUEST

ROAD CLASSIFICATION  
Heavy-duty ——— Light-duty ———  
Medium-duty ——— Unimproved dirt ———  
Interstate Route ——— State Route ———



SLIPPERY ROCK, PA.

N4100—W8000/7.5  
PHOTOINSPECTED 1977  
1961  
PHOTOREVISED 1970  
AMS 4966 II SE-SERIES V831

USGS Library  
Reston, VA.  
Topo Archive

