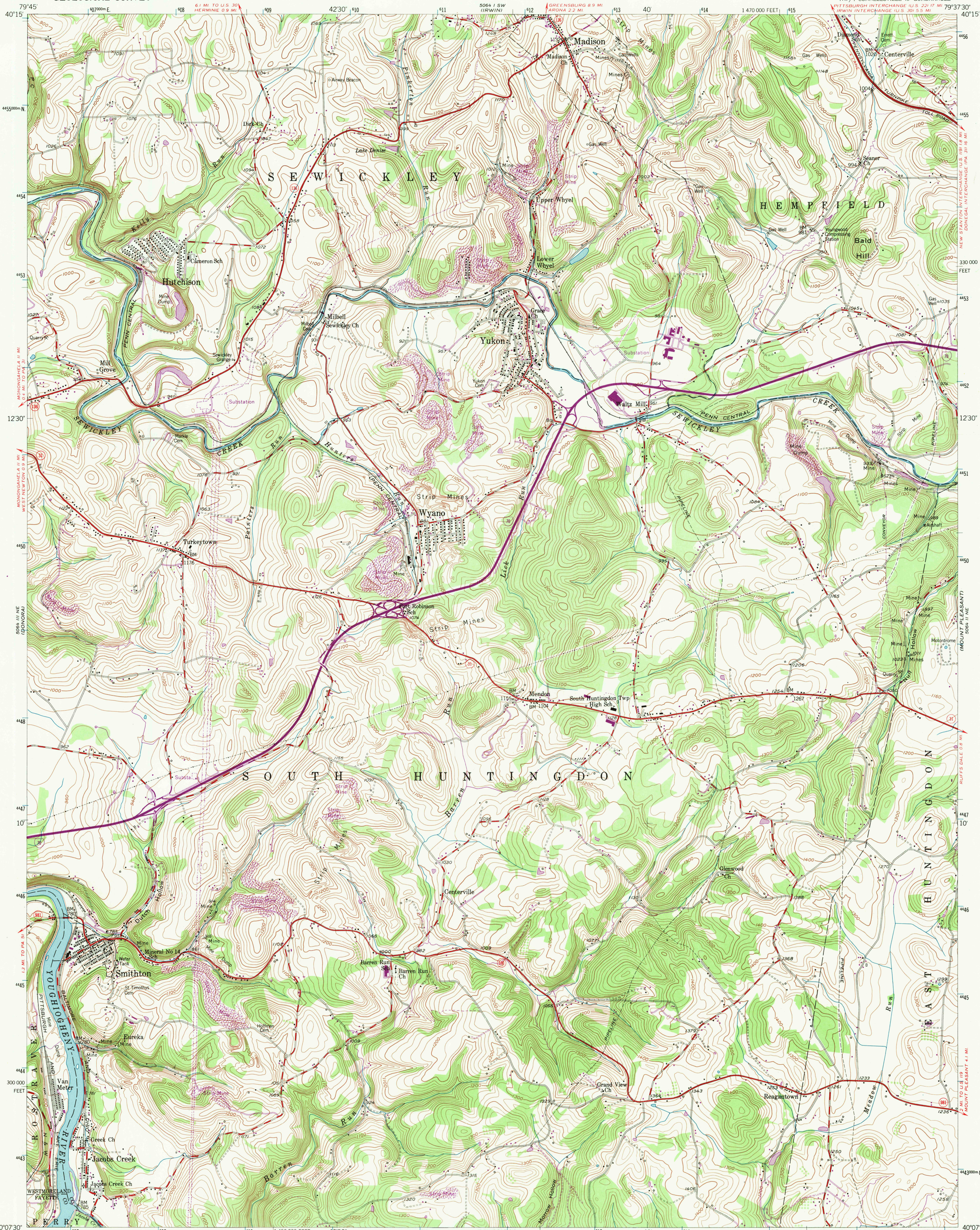


UNITED STATES
DEPARTMENT OF THE INTERIOR
GEOLOGICAL SURVEY

SMITHTON QUADRANGLE
PENNSYLVANIA
7.5 MINUTE SERIES (TOPOGRAPHIC)

NW/4 CONNELLSVILLE 15 QUADRANGLE
PITTSBURGH INTERCHANGE (U.S. 221 17 MI 79°37'30")
IRWIN INTERCHANGE (U.S. 301 5.5 MI)

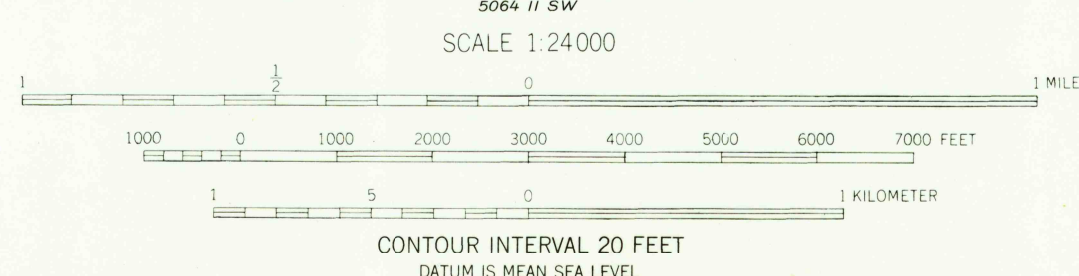
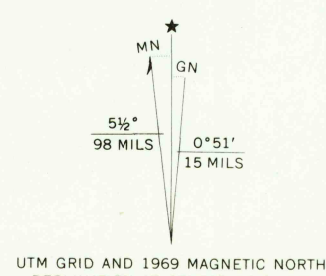


Mapped, edited, and published by the Geological Survey
Control by USGS and USC&GS

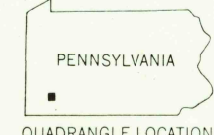
Topography from aerial photographs by multiplex methods
Aerial photographs taken 1952. Field check 1954

Polyconic projection. 1927 North American datum
10,000-foot grid based on Pennsylvania coordinate system, south zone
1000-meter Universal Transverse Mercator grid ticks, zone 17,
shown in blue

Revisions shown in purple compiled in cooperation with
State of Pennsylvania agencies from aerial photographs taken 1969
This information not field checked



USGS
HISTORICAL FILE
TOPOGRAPHIC DIVISION



ROAD CLASSIFICATION
Heavy-duty ——— Light-duty ———
Medium-duty ——— Unimproved dirt ———
U.S. Route ——— State Route ———
Interstate Route ———

U.S.G.S. SMITHTON, PA.
NW/4 CONNELLSVILLE 15 QUADRANGLE
N4007.5—W7937.5/7.5

FILE COPY
TOPOGRAPHIC DIVISION
1954
PHOTOREVISED 1969
MS 5064 II NW—SERIES V831

THIS MAP COMPLIES WITH NATIONAL MAP ACCURACY STANDARDS
FOR SALE BY U.S. GEOLOGICAL SURVEY, WASHINGTON, D. C. 20242
A FOLDER DESCRIBING TOPOGRAPHIC MAPS AND SYMBOLS IS AVAILABLE ON REQUEST

MAR 12 1970